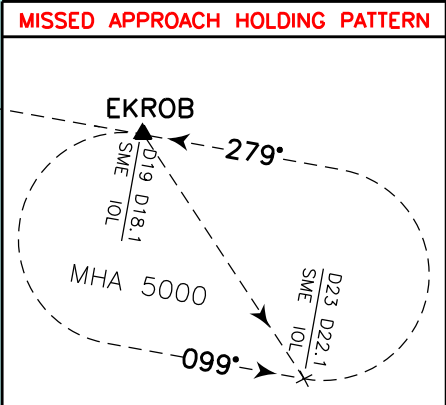
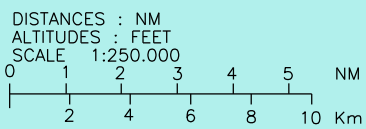
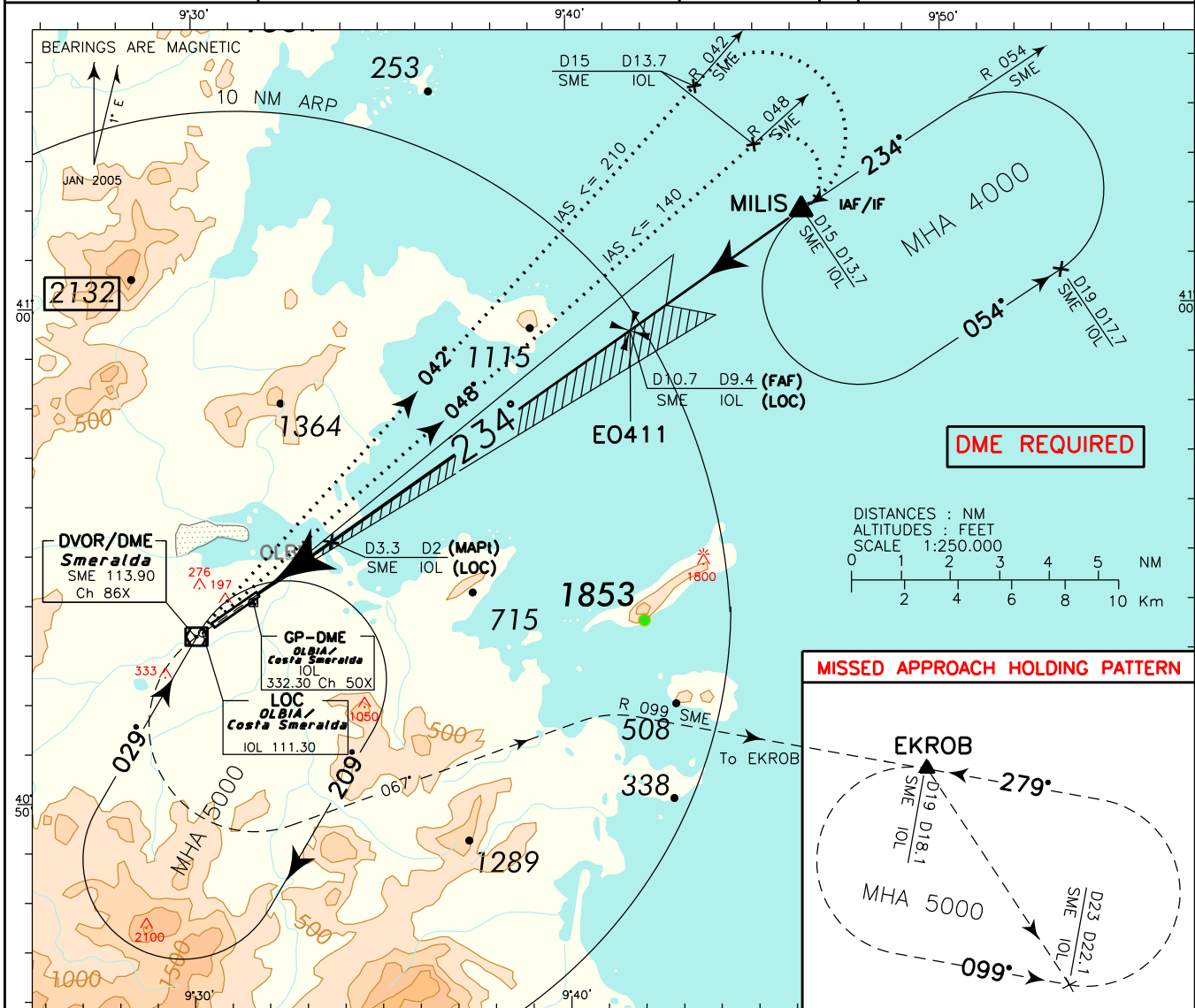


CHANGE: REVISED PROCEDURE AND RENUMBERED PAGE

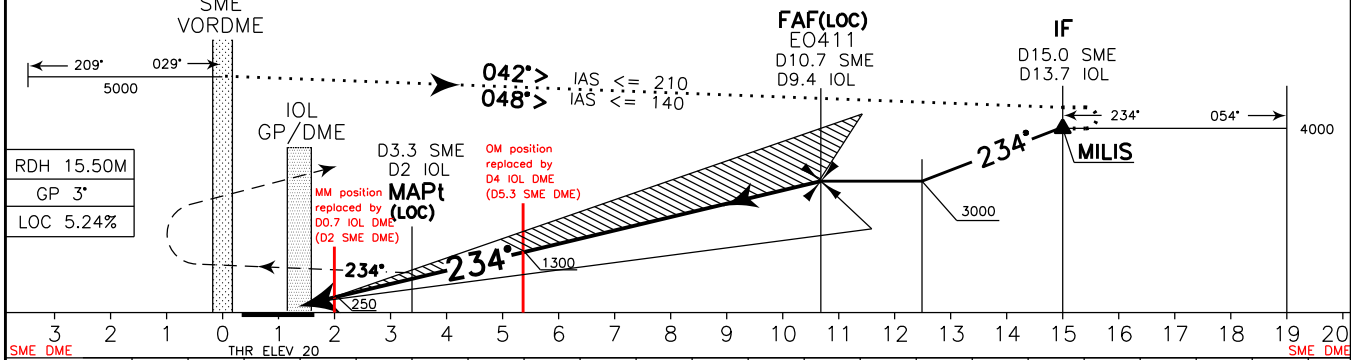
DOC 8168 ED 5 - 2006 - AMDT 4

APP	<i>Olbia Approach</i>	125.950 (122.875)	AD ELEV	LIEO	OLBIA/ COSTA SMERALDA ILS or LOC RWY 23
TWR	<i>Olbia Tower</i>	118.975 (121.950)	37		



TRANSITION ALT 6000

MISSED APPROACH: At 3.3 NM SME DME (2 NM IOL DME) proceed on TR 234° and climb to 5000 ft. Over SME VOR turn left on TR 067° to join RDL 099 SME VOR to EKROB. Hold on RDL 099 SME VOR (inbound TR 279°) between 19 NM and 23 NM SME DME (18.1 NM and 22.1 NM IOL DME) with left turn. First M.A. turn restricted to 185 kt IAS MAX.



SME DME	3	2	1	0	1	2	3	4	5	6	7	8	9	10	11	12	13	14	15	16	17	18	19	20
IOL DME	3	2	1	0	1	2	3	4	5	6	7	8	9	10	11	12	13	14	15	16	17	18	19	20

STRAIGHT IN APPROACH	OCA(OCH)				CIRCLING SECTORS WARNING: DURING NIGHT AND IN IMC CONDITIONS CIRCLING IS FORBIDDEN	GS	FT PER MIN	FAF-MAPT		MAPt-THR		IOL DME	ALT (HGT)		MNM SECT ALT																				
	A	B	C	D				7.3 NM	1.85 NM	IOL DME	SME		VOR																						
ILS M.A. MNM CLIMB GRADIENT 5%	370 (350)	380 (360)	390 (370)	400 (380)		80	425	5 : 29	1 : 23	8	2570 (2550)	7	2260 (2240)	6	1940 (1920)																				
ILS M.A. MNM CLIMB GRADIENT 2.5%	650 (630)	660 (640)	670 (650)	680 (660)												100	531	4 : 23	1 : 07	6	1620 (1600)	5	1300 (1280)												
LOC	680 (660)																							120	637	3 : 39	0 : 56	5	1620 (1600)						
DME	680 (660)																													140	743	3 : 08	0 : 48	4	1300 (1280)
CIRCLING (*) (see warning)	900 (863)	1600 (1563)	1960 (1923)	160																															