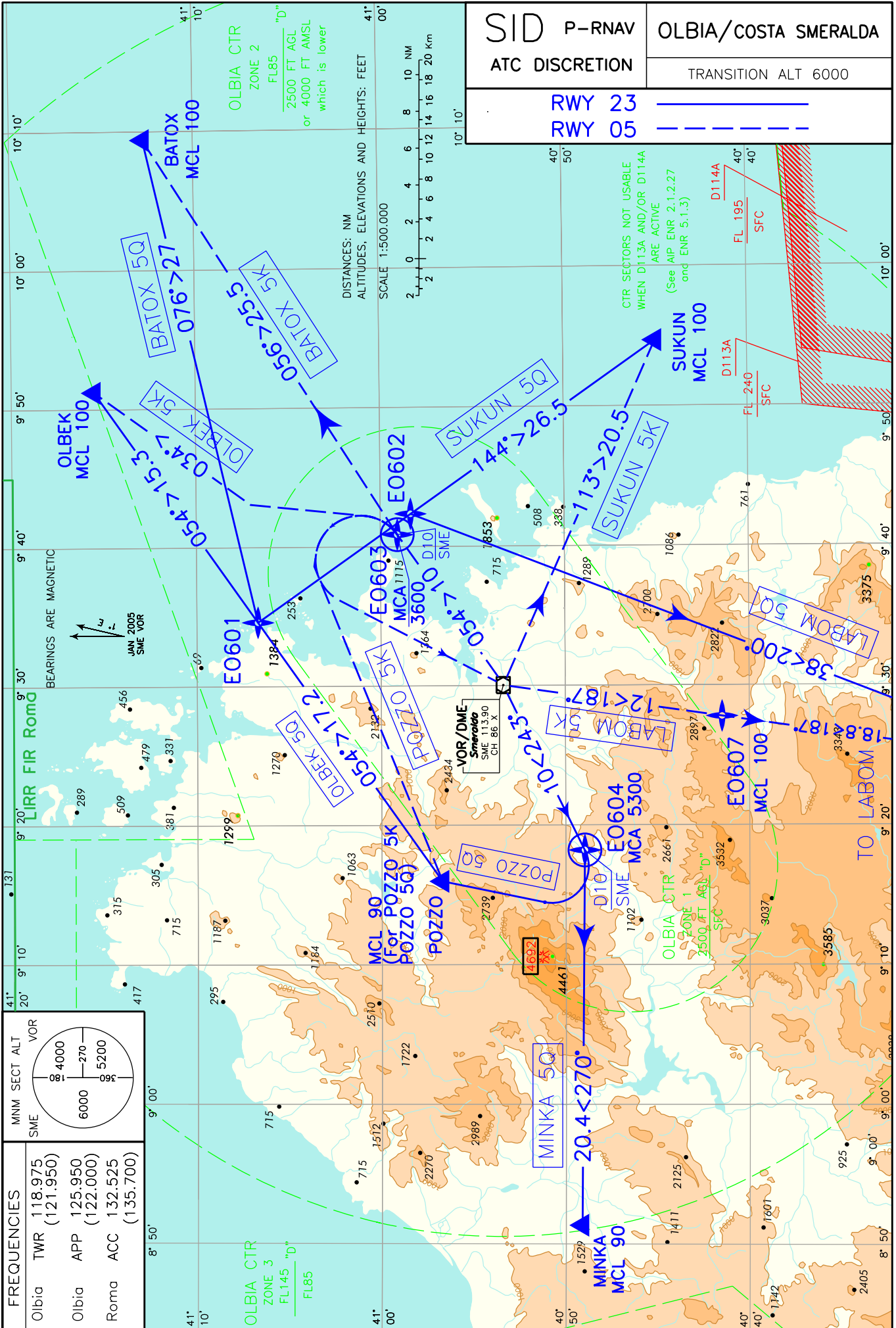


CHANGE: CTR CLASSIFICATION MODIFIED



SID P-RNAV RWY 05**NOTA**

Gradiente minimo di salita: 7% fino a lasciare 3600 ft.

BATOX 5K

Dopo il decollo procedere via EO603 – BATOX.

P-RNAV SID RWY 05**REMARK**

Minimum climb gradient: 7% until leaving 3600 ft.

BATOX 5K

After take-off proceed via EO603 – BATOX.

MCL: BATOX: FL 100

Path Terminator	Waypoint Name	Fly Over	Track °Mag	Turn Direction	MCA/MCL	Speed Limit (IAS)	Recommended Navaid	Bearing/Range to Navaid	Navigation Performance
CF	EO603	Y	054°	-	3600	-	SME VOR/DME	RDL 054/D10	P-RNAV
TF	BATOX	-	056°	-	FL100	-	-	-	P-RNAV

POZZO 5K

Dopo il decollo procedere via EO603 – POZZO.

POZZO 5K

After take-off proceed via EO603 – POZZO.

MCA/MCL: EO603: 3600 FT, POZZO: FL 90

Path Terminator	Waypoint Name	Fly Over	Track °Mag	Turn Direction	MCA/MCL	Speed Limit (IAS)	Recommended Navaid	Bearing/Range to Navaid	Navigation Performance
CF	EO603	Y	054°	-	3600	-	SME VOR/DME	RDL 054/D10	P-RNAV
DF	POZZO	-	-	L	FL90	240	-	-	P-RNAV

SUKUN 5K

Dopo il decollo procedere via EO603 – SME VOR/DME – SUKUN.

SUKUN 5K

After take-off proceed via EO603 – SME VOR/DME – SUKUN.

MCA/MCL: EO603: 3600 FT, SME VOR/DME: 6000Ft, SUKUN: FL 100

Path Terminator	Waypoint Name	Fly Over	Track °Mag	Turn Direction	MCA/MCL	Speed Limit (IAS)	Recommended Navaid	Bearing/Range to Navaid	Navigation Performance
CF	EO603	Y	054°	-	3600	-	SME VOR/DME	RDL 054/D10	P-RNAV
DF	SME VOR/DME	-	-	L	6000	240	-	-	P-RNAV
TF	SUKUN	-	113°	L	FL100	-	-	-	P-RNAV

OLBEK 5K

Dopo il decollo procedere via EO603 – OLBEK.

OLBEK 5K

After take-off proceed via EO603 - OLBEK.

MCA/MCL: EO603: 3600 FT, OLBEK: FL 100

Path Terminator	Waypoint Name	Fly Over	Track °Mag	Turn Direction	MCA/MCL	Speed Limit (IAS)	Recommended Navaid	Bearing/Range to Navaid	Navigation Performance
CF	EO603	Y	054°	-	3600	-	SME VOR/DME	RDL 054/D10	P-RNAV
CF	OLBEK	-	034°	-	FL100	-	SME VOR/DME	RDL 034/D27.3	P-RNAV

LABOM 5K

Dopo il decollo procedere via EO603 – SME VOR/DME – EO607 - LABOM.

LABOM 5K

After take-off proceed via EO603 – SME VOR/DME – EO607 - LABOM.

MCA/MCL: EO603: 3600 FT, SME VOR/DME: 6000Ft, EO607: FL 100

Path Terminator	Waypoint Name	Fly Over	Track °Mag	Turn Direction	MCA/MCL	Speed Limit (IAS)	Recommended Navaid	Bearing/Range to Navaid	Navigation Performance
CF	EO603	Y	054°	-	3600	-	SME VOR/DME	RDL 054/D10	P-RNAV
DF	SME VOR/DME	-	-	-	6000	240	-	-	P-RNAV
TF	EO607	-	187°	-	FL100	-	-	-	P-RNAV
TF	LABOM	-	187°	-	-	-	-	-	P-RNAV

SID P-RNAV RWY 23**NOTA**

Gradiente minimo di salita: 8.5% fino a lasciare 6000 ft.

BATOX 5Q

Dopo il decollo procedere su rotta 243° per il punto EO604 quindi POZZO – EO601 - BATOX.

P-RNAV SID RWY 23**REMARK**

Minimum climb gradient: 8.5% until leaving 6000 ft.

BATOX 5Q

After take-off proceed on track 243° bound to EO604 then POZZO – EO601 – BATOX.

MCL: EO604: 5300Ft, BATOX: FL 100

Path Terminator	Waypoint Name	Fly Over	Track °Mag	Turn Direction	MCA/MCL	Speed Limit (IAS)	Recommended Navaid	Bearing/ Range to Navaid	Navigation Performance
CA	-	-	234°	-	436	-	SME VOR/DME	-	P-RNAV
CF	EO604	Y	243°	-	5300	-	SME VOR/DME	RDL 243/D10	P-RNAV
DF	POZZO	-	-	R	-	-	-	-	P-RNAV
TF	EO601	-	054°	-	-	-	-	-	P-RNAV
TF	BATOX	-	076°	-	FL100	-	-	-	P-RNAV

POZZO 5Q

Dopo il decollo procedere su rotta 243° per il punto EO604 quindi POZZO.

POZZO 5Q

After take-off proceed on track 243° bound to EO604 then POZZO.

MCA/MCL: EO604: 5300 FT, POZZO: FL 90

Path Terminator	Waypoint Name	Fly Over	Track °Mag	Turn Direction	MCA/MCL	Speed Limit (IAS)	Recommended Navaid	Bearing/ Range to Navaid	Navigation Performance
CA	-	-	234°	-	436	-	SME VOR/DME	-	P-RNAV
CF	EO604	Y	243°	-	5300	-	SME VOR/DME	RDL 243/D10	P-RNAV
DF	POZZO	-	-	R	FL90	-	-	-	P-RNAV

SUKUN 5Q

Dopo il decollo procedere su rotta 243° per il punto EO604 quindi POZZO – EO601 – SUKUN.

SUKUN 5Q

After take-off proceed on track 243° bound to EO604 then POZZO – EO601 – SUKUN.

MCA/MCL: EO604: 5300 FT, SUKUN: FL 100

Path Terminator	Waypoint Name	Fly Over	Track °Mag	Turn Direction	MCA/MCL	Speed Limit (IAS)	Recommended Navaid	Bearing/ Range to Navaid	Navigation Performance
CA	-	-	234°	-	436	-	SME VOR/DME	-	P-RNAV
CF	EO604	Y	243°	-	5300	-	SME VOR/DME	RDL 243/D10	P-RNAV
DF	POZZO	-	-	R	-	-	-	-	P-RNAV
TF	EO601	-	054°	-	-	-	-	-	P-RNAV
TF	SUKUN	-	144°	R	FL100	-	-	-	P-RNAV

OLBEK 5Q

Dopo il decollo procedere su rotta 243° per il punto EO604 quindi POZZO – EO601 – OLBEK.

OLBEK 5Q

After take-off proceed on track 243° bound to EO604 then POZZO – EO601 - OLBEK.

MCA/MCL: EO604: 5300 FT, OLBEK: FL 100

Path Terminator	Waypoint Name	Fly Over	Track °Mag	Turn Direction	MCA/MCL	Speed Limit (IAS)	Recommended Navaid	Bearing/ Range to Navaid	Navigation Performance
CA	-	-	234°	-	436	-	SME VOR/DME	-	P-RNAV
CF	EO604	Y	243°	-	5300	-	SME VOR/DME	RDL 243/D10	P-RNAV
DF	POZZO	-	-	R	-	-	-	-	P-RNAV
TF	EO601	-	054°	-	-	-	-	-	P-RNAV
TF	OLBEK	-	054°	-	FL100	-	-	-	P-RNAV

LABOM 5Q

Dopo il decollo procedere su rotta 243° per il punto EO604 quindi POZZO – EO601 - EO602 – LABOM.

LABOM 5Q

Dopo il decollo procedere su rotta 243° per il punto EO604 quindi POZZO – EO601 – EO602 – LABOM.

MCA/MCL: EO604: 5300 FT, EO602: FL100

Path Terminator	Waypoint Name	Fly Over	Track °Mag	Turn Direction	MCA/MCL	Speed Limit (IAS)	Recommended Navaid	Bearing/ Range to Navaid	Navigation Performance
CA	-	-	234°	-	436	-	SME VOR/DME	-	P-RNAV
CF	EO604	Y	243°	-	5300	-	SME VOR/DME	RDL 243/D10	P-RNAV
DF	POZZO	-	-	R	-	-	-	-	P-RNAV
TF	EO601	-	054°	-	-	-	-	-	P-RNAV
TF	EO602	-	144°	R	FL100	-	-	-	P-RNAV
TF	LABOM	-	200°	-	-	-	-	-	P-RNAV

MINKA 5Q

Dopo il decollo procedere su rotta 243° per il punto EO604 quindi MINKA.

MINKA 5Q

After take-off proceed on track 243° bound to EO604 then MINKA.

MCA/MCL: EO604: 5300 FT, MINKA: FL 90

Path Terminator	Waypoint Name	Fly Over	Track °Mag	Turn Direction	MCA/MCL	Speed Limit (IAS)	Recommended Navaid	Bearing/ Range to Navaid	Navigation Performance
CA	-	-	234°	-	436	-	SME VOR/DME	-	P-RNAV
CF	EO604	Y	243°	-	5300	-	SME VOR/DME	RDL 243/D10	P-RNAV
TF	MINKA	-	270°	-	FL90	-	-	-	P-RNAV

Waypoints Table formatted according ARINC 424 standards

Waypoint	Latitude	Longitude
EO601	N041064337	E009343658
EO602	N040582330	E009422123
EO603	N040590726	E009405215
EO604	N040490070	E009181184
EO607	N040413156	E009274659

Intenzionalmente bianca

Intentionally left blank