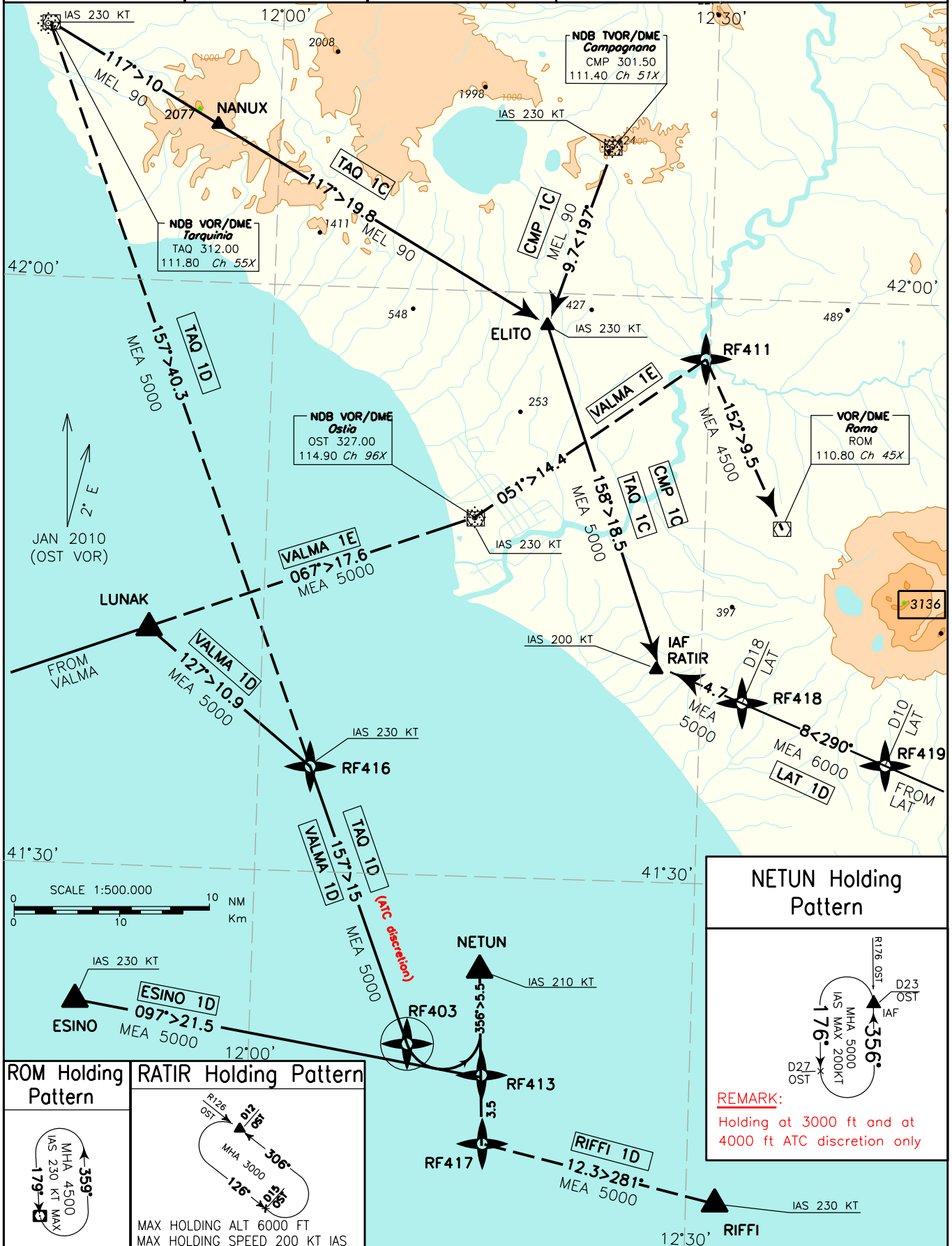


MNM SECT ALT OST VOR NDB 	STAR RWY 34L/C/R		ROMA/FIUMICINO	
			TRANSITION ALT 6000	
AIRSPACE CLASSIFICATION SEE AIP ENR 1.4	LEGEND		FREQUENCIES	
	ATC DISCRETION →		APP Roma Arrivals 125.500 Roma Director 131.250	TWR Fiume Tower 118.700 (127.625)

CHANGE: ATC MINIMUM SURVEILLANCE ALTITUDE WITHDRAWN



STAR 34 L/C/R

TAQ 1C

TAQ VOR/DME – NANUX - ELITO – RATIR

MEL/MEA: TAQ VOR/DME – ELITO: FL90; ELITO – RATIR : 5000 FT

Path Terminator	Waypoint Name	Track °Mag	Turn Direction	MEL/ MEA	Speed Limit	Recommended Navaid	Bearing/ Range to Navaid	Navigation Performance
IF	TAQ	-	-	-	230	-	-	P-RNAV
TF	NANUX	117°	-	-	230	-	-	P-RNAV
TF	ELITO	117°	-	FL 90	230	-	-	P-RNAV
HM	RATIR	158°	-	5000	200	-	-	P-RNAV

TAQ 1D(ATC DISCRETION)

TAQ VOR/DME - RF416 – RF403 – NETUN.

MEA: TAQ VOR/DME – NETUN: 5000 FT

Path Terminator	Waypoint Name	Track °Mag	Turn Direction	MEL/ MEA	Speed Limit	Recommended Navaid	Bearing/ Range to Navaid	Navigation Performance
IF	TAQ	-	-	-	230	-	-	P-RNAV
TF	RF416	157°	-	5000	230	-	-	P-RNAV
TF	RF403	157°	L	-	230	-	-	P-RNAV
HM	NETUN	356°	-	5000	210	-	-	P-RNAV

CMP 1C

CMP VOR/DME – ELITO – RATIR.

MEL/MEA: CMP VOR/DME – ELITO: FL90; ELITO – RATIR : 5000 FT

Path Terminator	Waypoint Name	Track °Mag	Turn Direction	MEL/ MEA	Speed Limit	Recommended Navaid	Bearing/ Range to Navaid	Navigation Performance
IF	CMP	-	-	-	230	-	-	P-RNAV
TF	ELITO	197°	-	FL 90	230	-	-	P-RNAV
HM	RATIR	158°	-	5000	200	-	-	P-RNAV

VALMA 1D

VALMA - LUNAK – RF416 – RF403 – NETUN.

MEA: VALMA – NETUN: 5000 FT

Path Terminator	Waypoint Name	Track °Mag	Turn Direction	MEL/ MEA	Speed Limit	Recommended Navaid	Bearing/ Range to Navaid	Navigation Performance
IF	VALMA	-	-	-	250	-	-	P-RNAV
TF	LUNAK	067°	-	5000	250	-	-	P-RNAV
TF	RF416	127°	-	-	230	-	-	P-RNAV
TF	RF403	157°	L	-	230	-	-	P-RNAV
HM	NETUN	356°	-	5000	210	-	-	P-RNAV

VALMA 1E (ATC DISCRETION)

VALMA - LUNAK – OST VOR/DME – RF411 – ROM VOR/DME.

MEA: VALMA – RF411: 5000FT; RF411 – ROM: 4500 FT

Path Terminator	Waypoint Name	Track °Mag	Turn Direction	MEL/MEA	Speed Limit	Recommended Navaid	Bearing/Range to Navaid	Navigation Performance
IF	VALMA	-	-	-	250	-	-	P-RNAV
TF	LUNAK	067°	-	5000	250			P-RNAV
TF	OST VOR/DME	067°	-	-	230	-	-	P-RNAV
TF	RF411	051°	-	-	230	-	-	P-RNAV
HM	ROM VOR/DME	152°	-	4500	230	-	-	P-RNAV

LAT 1D

LAT VOR/DME – RF419 – RF418 - RATIR.

MEL/MEA: LAT VOR/DME – RF419: FL 90; RF419 – RF418; 6000 FT; RF418 – RATIR: 5000 FT

Path Terminator	Waypoint Name	Track °Mag	Turn Direction	MEL/MEA	Speed Limit	Recommended Navaid	Bearing/Range to Navaid	Navigation Performance
IF	LAT	-	-	-	250	-	-	Conventional/P-RNAV (overlay)
TF	RF419	290°		FL90	-			Conventional/P-RNAV (overlay)
TF	RF418	290°		6000	-			Conventional/P-RNAV (overlay)
HM	RATIR	290°	-	5000	200	-	-	Conventional/P-RNAV (overlay)

ESINO 1D

ESINO – RF413 - NETUN

MEA: ESINO – NETUN: 5000 FT

Path Terminator	Waypoint Name	Track °Mag	Turn Direction	MEL/MEA	Speed Limit	Recommended Navaid	Bearing/Range to Navaid	Navigation Performance
IF	ESINO	-	-	-	230	-	-	Conventional/P-RNAV (overlay)
TF	RF413	097°	-	-	-	-	-	Conventional/P-RNAV (overlay)
HM	NETUN	356°	L	5000	210	-	-	Conventional/P-RNAV (overlay)

RIFFI 1D (ATC DISCRETION)

RIFFI – RF417 - NETUN.

MEA: RIFFI – RF417 – NETUN 5000FT

Path Terminator	Waypoint Name	Track °Mag	Turn Direction	MEL/ MEA	Speed Limit	Recommended Navaid	Bearing/ Range to Navaid	Navigation Performance
IF	RIFFI	-	-	-	230	-	-	Conventional/P-RNAV (overlay)
TF	RF417	281°	-	-	-	-	-	Conventional/P-RNAV (overlay)
HM	NETUN	356°	-	-	210	-	-	Conventional/P-RNAV (overlay)

Waypoints Table formatted according ARINC 424 standards

Waypoint	Latitude	Longitude
RF403	N41212054	E012104635
RF411	N41565210	E012294435
RF413	N41194505	E012155137
RF416	N41352277	E012033317
RF417	N41161451	E012160313
RF418	N41390968	E012324875
RF419	N41361170	E012424323

Intenzionalmente bianca

Intentionally left blank