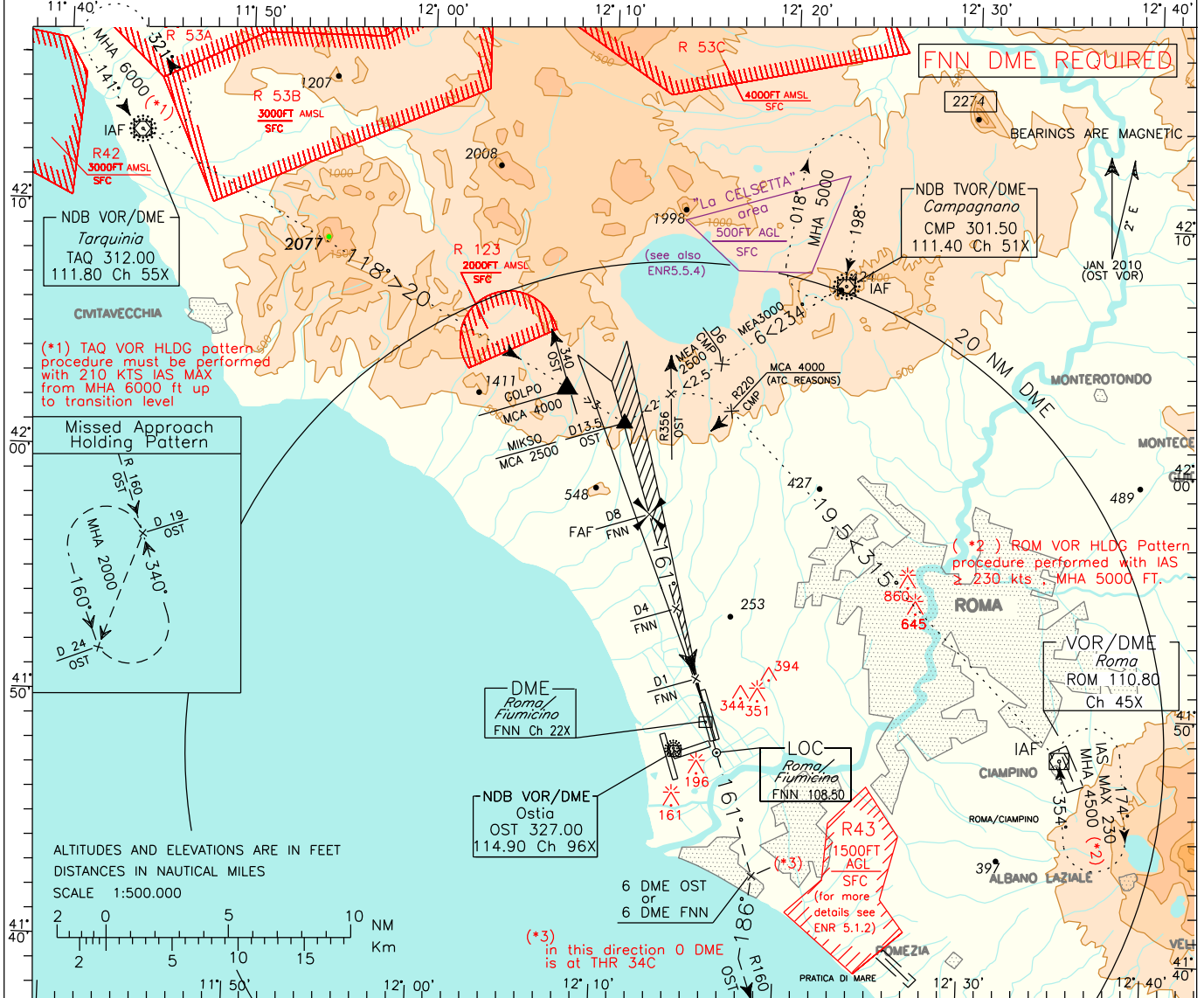


DOC. 8168 ED.5-2006 AMDT 4

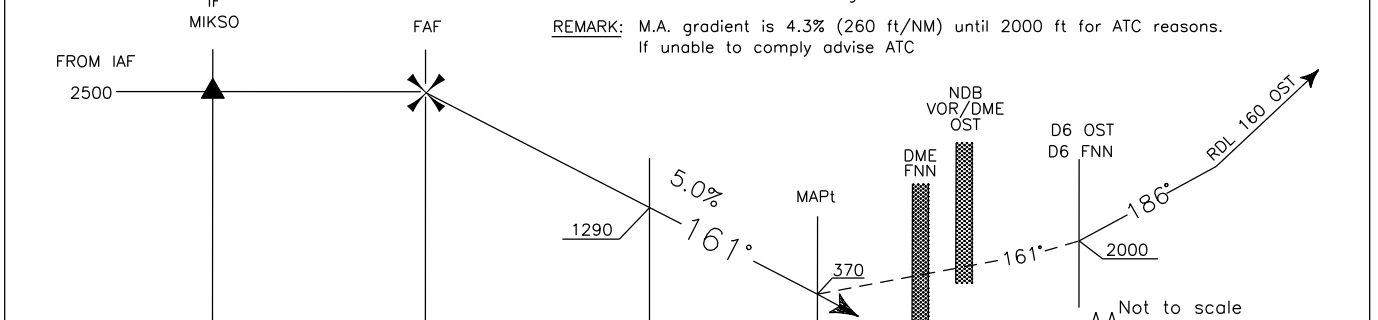
CHANGE: ATS GEOGRAPHY UPDATED

ATIS 120.175	APP <i>Roma Arrivals</i> 125.500 <i>Roma Director</i> 131.250	AD ELEV 13	LIRF ROMA/ FIUMICINO LOC RWY 16C
	TWR <i>Fiume Tower</i> 118.700 (127.625)		
	GND <i>Fiume Ground</i> 121.900		



TRANSITION ALT 6000

MISSED APPROACH: Proceed on RWY heading 161°; climb to 2000 ft, at 6 NM OST DME or 6 NM FNN DME to be reached at 2000 ft, turn right heading 186° to join RDL/QDR 160 OST VOR NDB; hold between 19 and 24 NM OST DME - IAS ≤ 185 kt during turn.



FNN DME	13	12	11	10	9	8	7	6	5	4	3	2	1	0	THR Elev 8	0	1	2	3	4	5	6	(*3) FNN DME
OST DME																							OST DME

STRAIGHT IN APPROACH	OCA(OCH)	A				B				C				D				DIST	LOC+DME	FT per MIN	GS	FAF-D4 4 NM	D4-MAPt 3 NM	MNM SECT ALT OST VOR NDB	
		1	2	3	4	1	2	3	4	1	2	3	4	1	2	3	4								
LOC		420(407)																7 DME	2200(2192)	405	80	3:00	2:15		
																		6 DME	1890(1882)	510	100	2:24	1:48		
																		5 DME	1590(1582)	610	120	2:00	1:30		
																		4 DME	1290(1282)	710	140	1:43	1:17		
																		3 DME	980(972)	815	160	1:30	1:08		
																		2 DME	680(672)	915	180	1:20	1:00		
CIRCLING		800(787)								900(887)								1 DME	370(362)						