

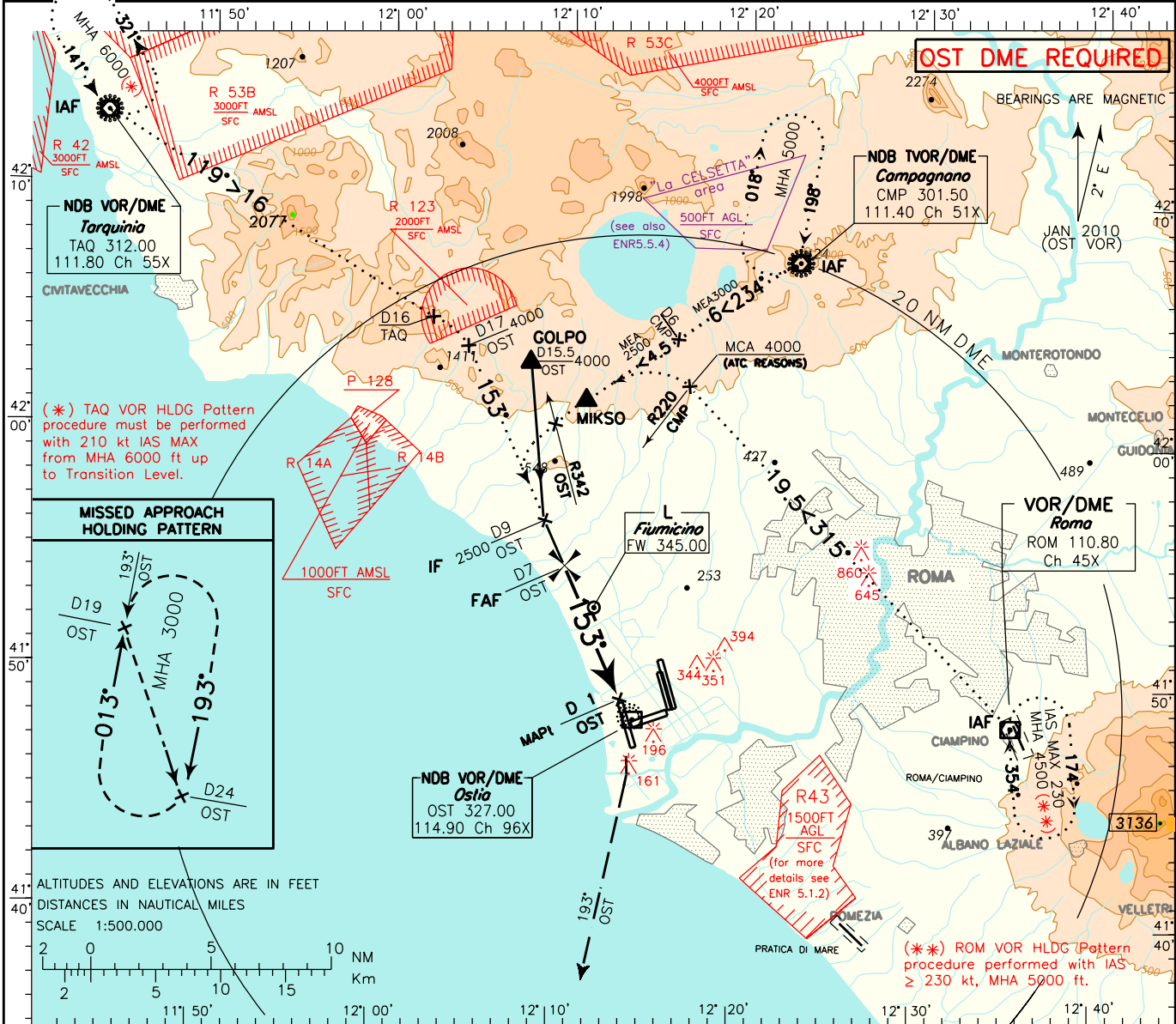
ICAO - INSTRUMENT APPROACH CHART

AD 2 LIRF 5-13

DOC. 8168 ED.5-2006 AMDT 4

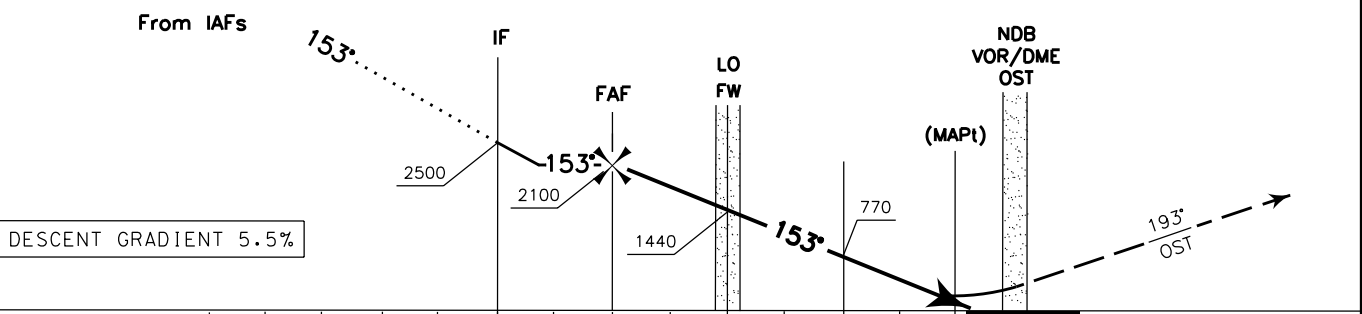
CHANGE: ATS GEOGRAPHY UPDATED

REMARK: Final track off set 7'56" from RWY center line. RWY center line intercepted 2030 m before THR 16R	APP Roma Arrivals Roma Director	125.500 131.250	AD ELEV 13	LIRF ROMA/FIUMICINO VOR or NDB RWY 16R
ATIS 126.125	TWR Fiume Tower GND Fiume Ground	118.700 (127.625) 121.900		



TRANSITION ALT 6000

MISSED APPROACH: Turn right to join RDL/QDR 193 OST VOR/NDB climbing to 3000 ft; cross 2000 ft not further than 9 NM OST DME; hold between 19 and 24 NM OST DME.



OST DME	D14	D13	D12	D11	D10	D9	D8	D7	D6	D5	D4	D3	D2	D1	0	1	2	3	4	5	6	OST DME	
NM	16	15	14	13	12	11	10	9	8	7	6	5	4	3	2	1	0	1	2	3	4	5	6

STRAIGHT IN APPROACH	OCA(OCH)				FT per MIN	GS	FAF-MAP 6 NM	DIST	ALT (HGT)	MNM SECT ALT OST VOR NDB
	A	B	C	D						
VOR		400 (387)			445	80	4 : 30	6 DME	1766(1759)	
NDB		400 (387)			555	100	3 : 36	5 DME	1432(1425)	
					670	120	3 : 00	4 DME	1098(1091)	
					780	140	2 : 34	3 DME	764 (757)	
CIRCLING	800 (787)		900 (887)		890	160	2 : 15	2 DME	430 (423)	