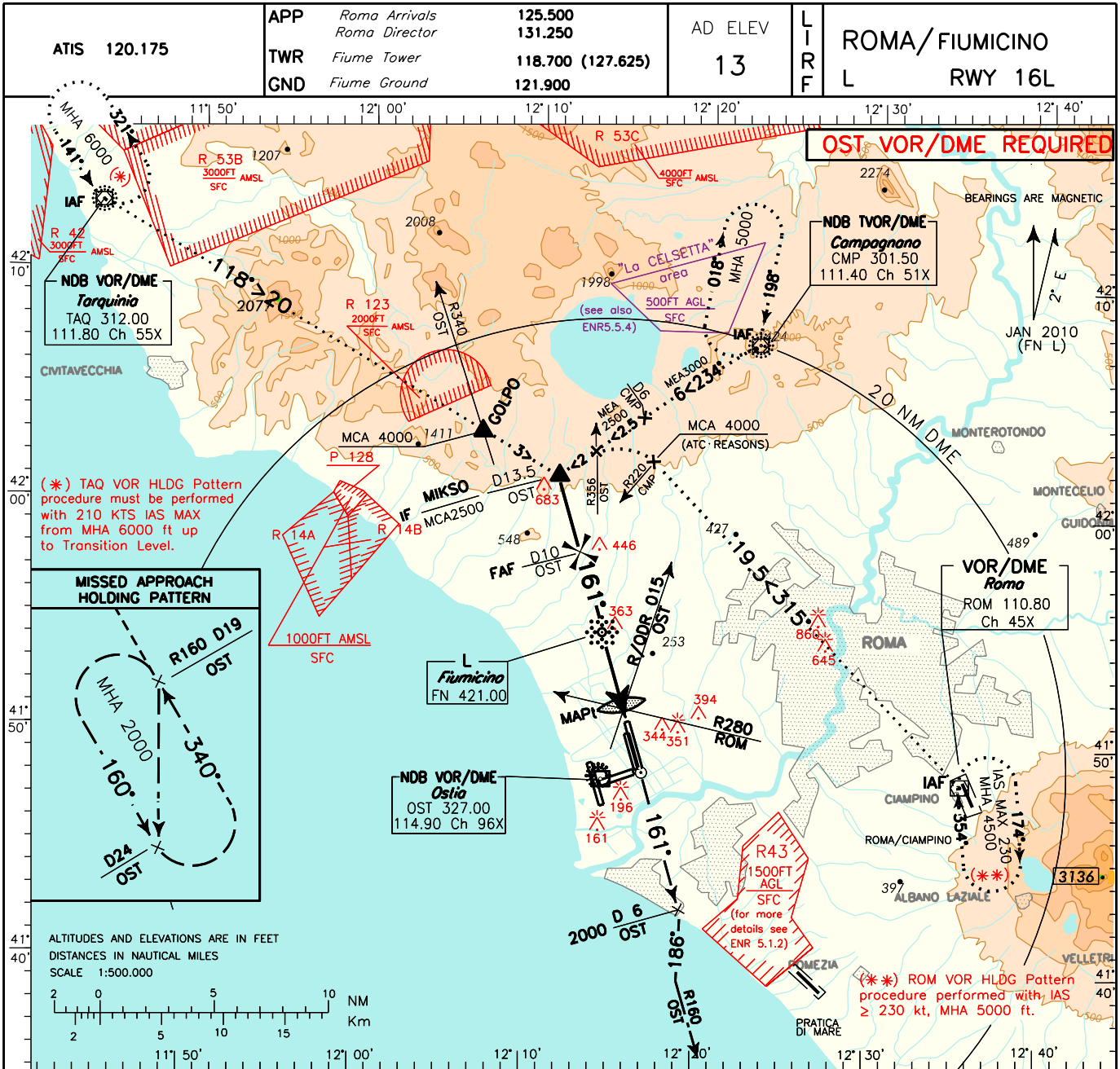


ICAO - INSTRUMENT APPROACH CHART

AD 2 LIRF 5-15

DOC. 8168 ED.5-2006 AMDT 4

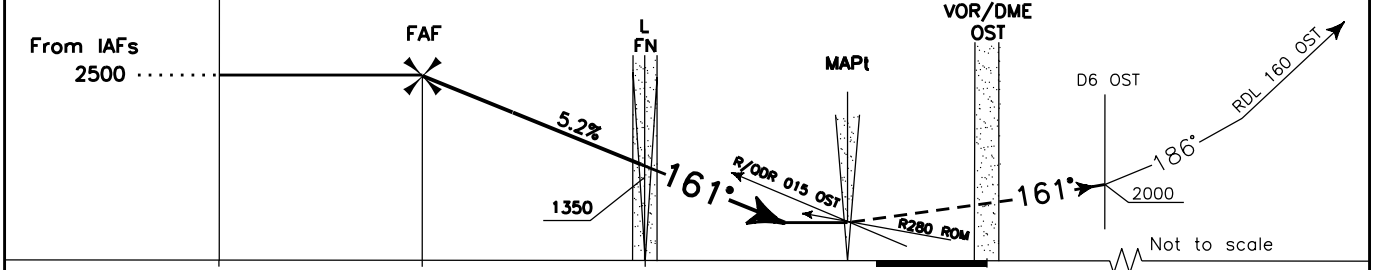
CHANGE: AIS GEOGRAPHY UPDATED



TRANSITION ALT 6000

MISSED APPROACH: Proceed on RWY heading 161°, climb to 2000 ft; at 6 NM OST DME to be reached at 2000 ft, turn right heading 186° to join RDL/QDR 160 OST VOR NDB; hold between 19 and 24 NM OST DME - IAS ≤ 185 kt during turn.

REMARK: M.A. Gradient is 4,3% (260 ft/NM) until 2000 ft for ATC reasons. If unable to comply advice ATC.



OST DME	D13.5	D10	D6.5	THR Elev 13	0	D6 OST	RDL 160 OST	OST DME																
NM	14	13	12	11	10	9	8	7	6	5	4	3	2	1	0	1	2	3	4	5	6	7	8	NM

OCA(OCH)		A	B	C	D	OCTA	ALT(HGT)	FT per MIN	GS	FAF-MAPt		MAPt-THR		MNM SECT ALT
STRAIGHT IN APPROACH	L	650 (637)								7.2 NM	0.5 NM	L	FN	
STRAIGHT IN APPROACH	L	9	2182(2169)	425	80	5 : 24	0 : 23	5000	220	5700	2000	99	318	
		8	1864(1851)	531	100	4 : 19	0 : 18							
		7	1546(1533)	637	120	3 : 36	0 : 15							
		6	1228(1215)	743	140	3 : 05	0 : 13							
CIRCLING		800 (787)		900 (887)		5	910(897)	849	160	2 : 42	0 : 11			