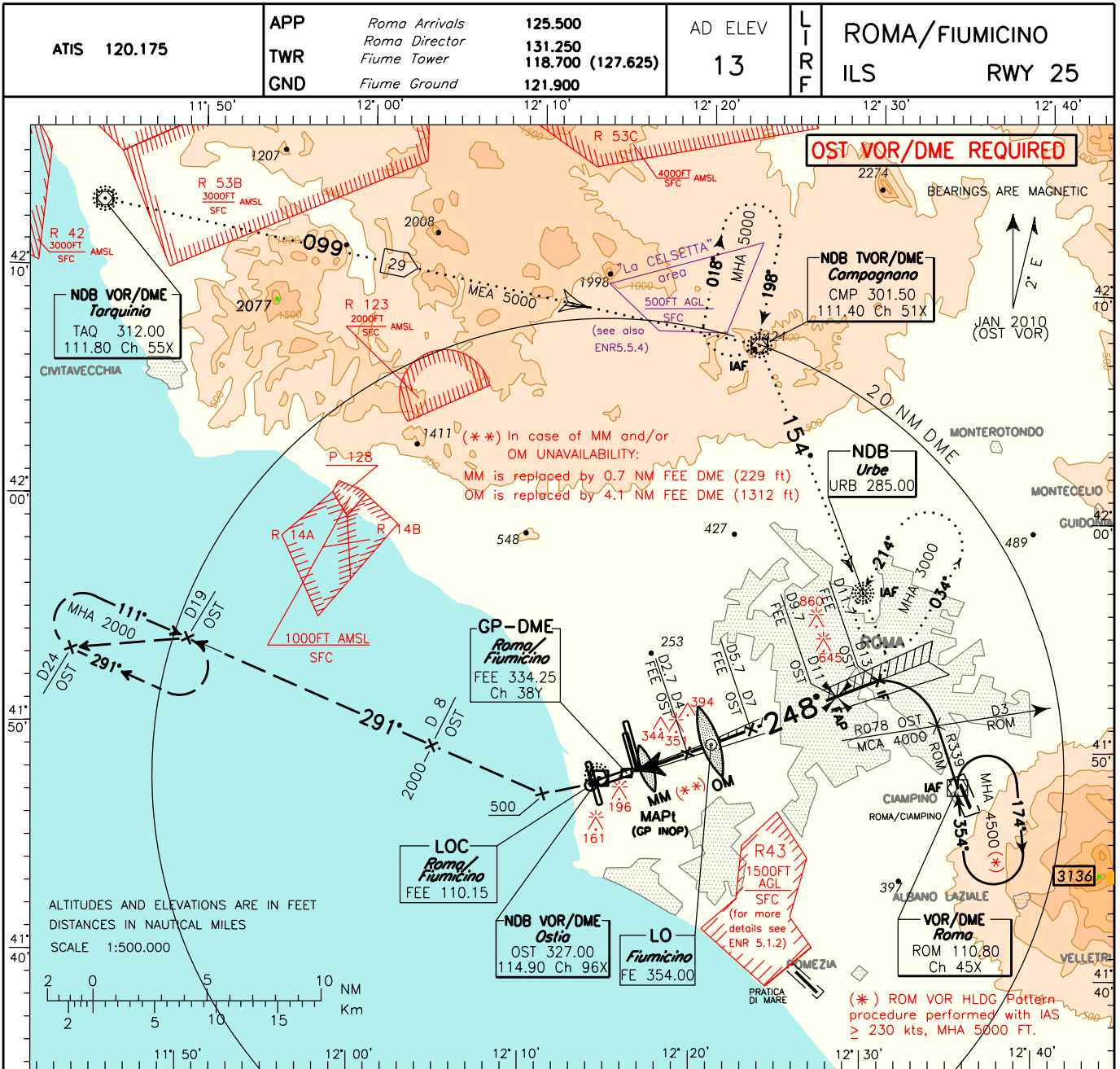


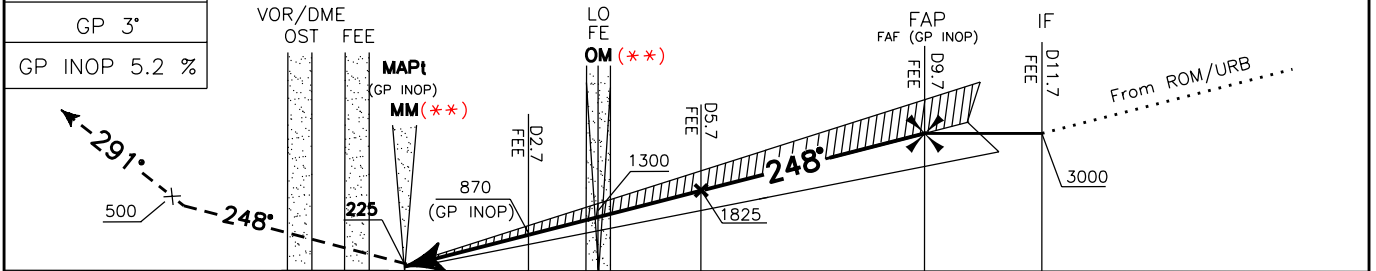
DOC. 8168 ED.5-2006 AMDT 4

CHANGE: MISSED APPROACH TURNING POINT ALTITUDE UPDATED



**TRANSITION** ALT 6000

**MISSED APPROACH:** Climb to 500 ft on heading 248°, then turn right on RDL/QDR 291 OST VOR NDB and climb to 2000 ft within 8 NM OST DME. Hold on RDL/QDR 291 OST VOR NDB between 19 and 24 NM OST DME. Right turns.



OST DME														OST DME									
FEE DME	D2	D1	D0	D1	D2	D3	D4	D5	D6	D7	D8	D9	D10	D11	D12	D13	FEE DME						
NM	5	4	3	2	1	0	1	2	3	4	5	6	7	8	9	10	11	12	13	14	15	16	NM

STRAIGHT IN APPROACH	OCA(OCH)	A	B	C	D	FT per MIN	GS	FAP-OM	OM-MM	DME FEE	ALT (HGT)	MNM SECT ALT OST VOR NDB 	
	ILS CAT. I	215 (210)	225 (220)	235 (230)	240 (235)	420	80	5.7 NM	3.4 NM	5	1600 (1595)		
		LOC	400 (395)				525	100	3 : 24	2 : 02	4		1285 (1280)
			735	140	2 : 26	1 : 27	2	645 (640)					
CIRCLING	800 (787)		900 (887)		845	160	1 : 53	1 : 16	1	330 (325)			