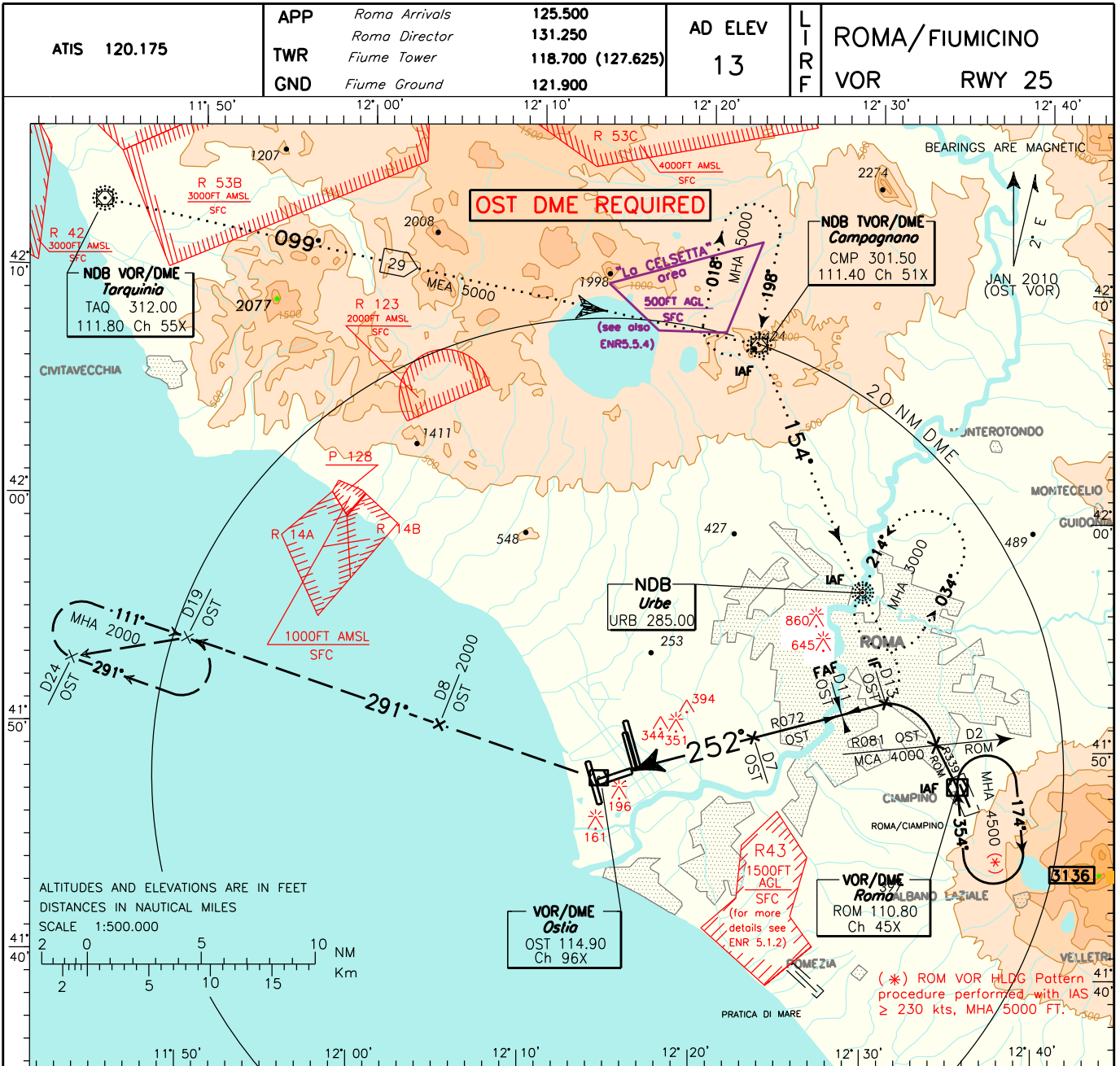
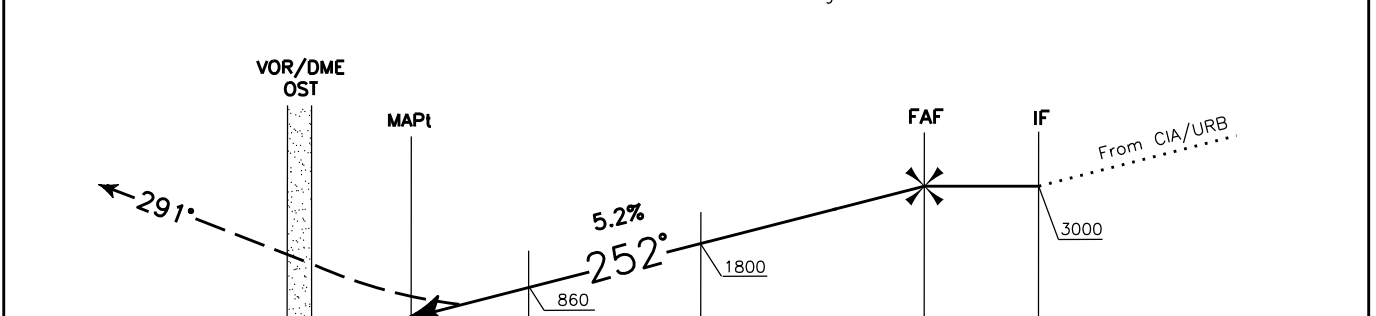


DOC. 8168 ED.5-2006 AMDT 4

CHANGE: ATS GEOGRAPHY UPDATED



TRANSITION ALT 6000 MISSED APPROACH: Turn right to join RDL 291 OST VOR and climb to 2000 ft within 8 NM OST DME. Hold on RDL 291 OST VOR between 19 and 24 NM OST DME. Right turns.



OST DME		THR Elev 5													OST DME										
NM		5	4	3	2	1	0	1	2	3	4	5	6	7	8	9	10	11	12	13	14	15	16	NM	
OCA(OCH)		A		B		C		D				FT per MIN		GS	FAF-MAP		DIST		ALT (HGT)		MNM SECT ALT				
STRAIGHT IN APPROACH	VOR			550 (545)						420	80	3 : 45		6 DME	1490(1485)		3300		220		5200				
										525	100	3 : 00		5 DME	1170(1165)		120		310						
										630	120	2 : 30		4 DME	860 (855)		2000								
	CIRCLING		800 (787)		900 (887)						735	140	2 : 08		3 DME	540 (535)									
										845	160	1 : 52		2 DME	220 (215)										