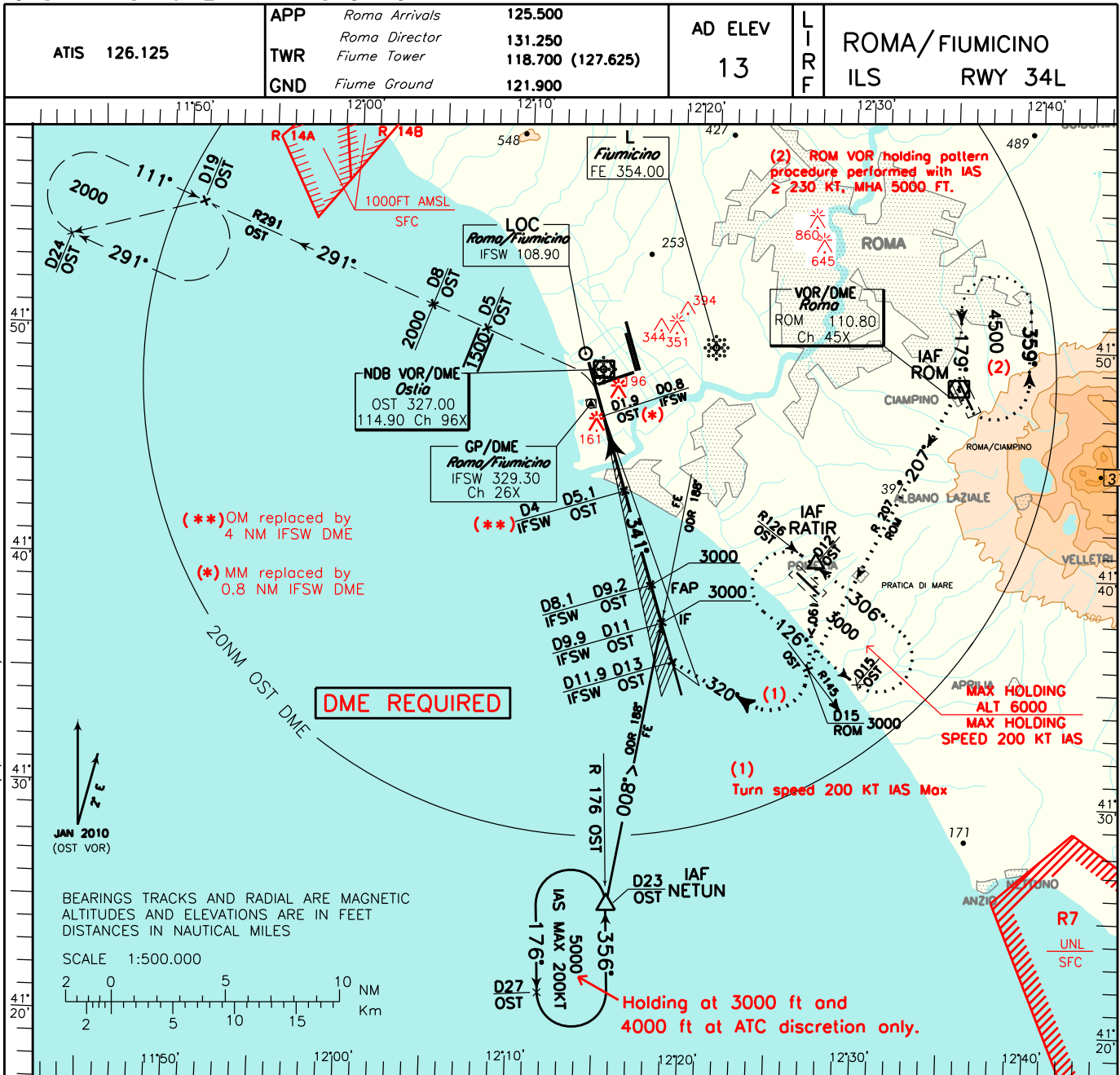
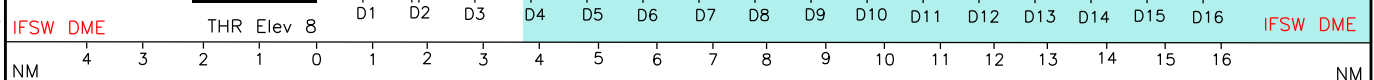
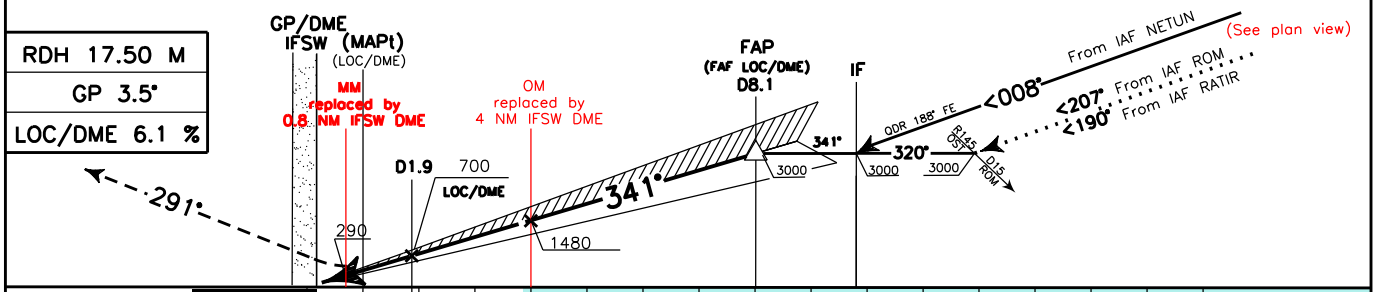


CHANGE: LI R14 ZONE MODIFIED (A/B sectors)



TRANSITION ALT 6000

MISSED APPROACH: Climb to 400 ft on TR 341°; then turn left to join RDL/QDR 291 OST VOR NDB climb and maintain 1500 ft until 5 NM OST DME, then climb to 2000 ft to be reached within 8 NM OST DME. Hold on RDL 291 OST VOR between 19 and 24 NM OST DME. Right turns.



STRAIGHT IN APPROACH	OCA(OCH)				FT per MIN	GS	FAP-MAPT	MAPT-THR	IFSW DME	ALT (HEIGHT)	MNM SECT ALT
	ILS CAT I	A	B	D							
STRAIGHT IN APPROACH	ILS CAT I	190 (182)	204 (196)	214 (206)	226 (218)	494	80	5 : 20	0 : 36	8	2968 (2960)
	LOC+DME	380 (367)				618	100	4 : 16	0 : 29	7	2596 (2588)
						741	120	3 : 33	0 : 24	6	2224 (2216)
						865	140	3 : 03	0 : 21	5	1852 (1844)
						988	160	2 : 40	0 : 18	4	1480 (1472)
CIRCLING	800 (787)		900 (887)		865	140	3 : 03	0 : 21	3	1108 (1100)	
					988	160	2 : 40	0 : 18	2	736 (728)	
									1	364 (356)	

