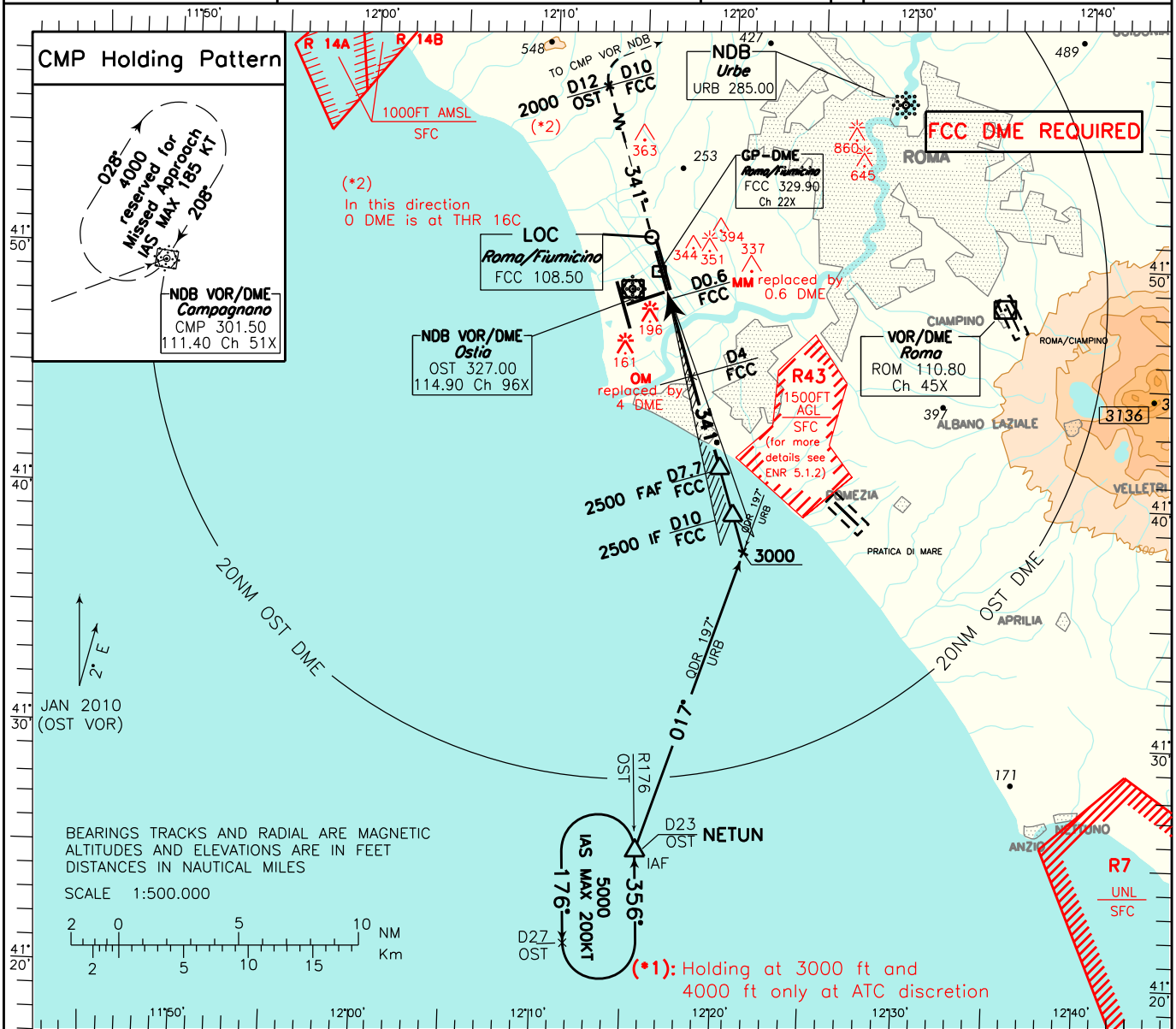
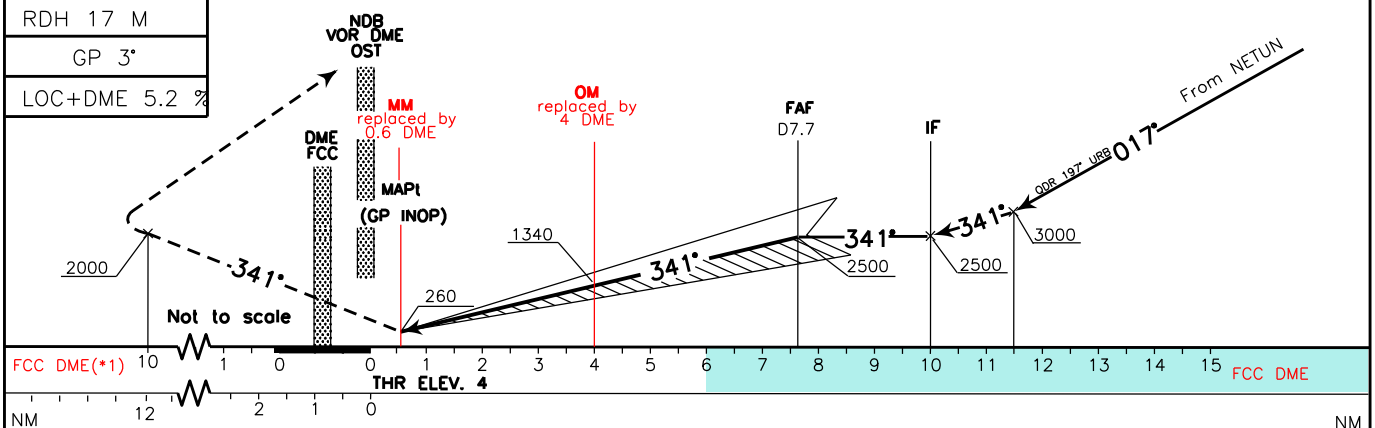


DOC. 8168 ED.5-2006 AMDT 4

ATIS 120.175	APP Roma Arrivals 125.500	AD ELEV 13	LIRF ROMA/FIUMICINO ILS-Z RWY 34C
	TWR Roma Director 131.250		
	Fiume Tower 118.700 (127.625)		
	Fiume Ground 121.900		



TRANSITION ALT 6000 MISSED APPROACH: Proceed on TR 341° climbing to 4000 ft. Cross 12 NM OST DME at 2000 ft or above, then turn right to CMP VOR NDB, to be reached at 4000 ft.



STRAIGHT IN APPROACH	ILS CAT I	OCA(OCH)				DIST	ILS	FT per MIN	GS	FAF-D4 3.65 NM	D4-DO.6 3.4 NM	MNM SECT ALT
		A	B	C	D							
*	LOC		200 (196)			7 DME	2290(2286)	425	80	2:44	2:33	
	LOC		420 (416)			6 DME	1980(1976)	530	100	2:11	2:02	
						5 DME	1660(1656)	635	120	1:50	1:42	
						4 DME	1340(1336)	740	140	1:34	1:27	
						3 DME	1020(1016)	850	160	1:22	1:17	
						2 DME	700(696)	955	180	1:13	1:08	
						1 DME	390(386)					
CIRCLING		800 (787)		900 (887)								