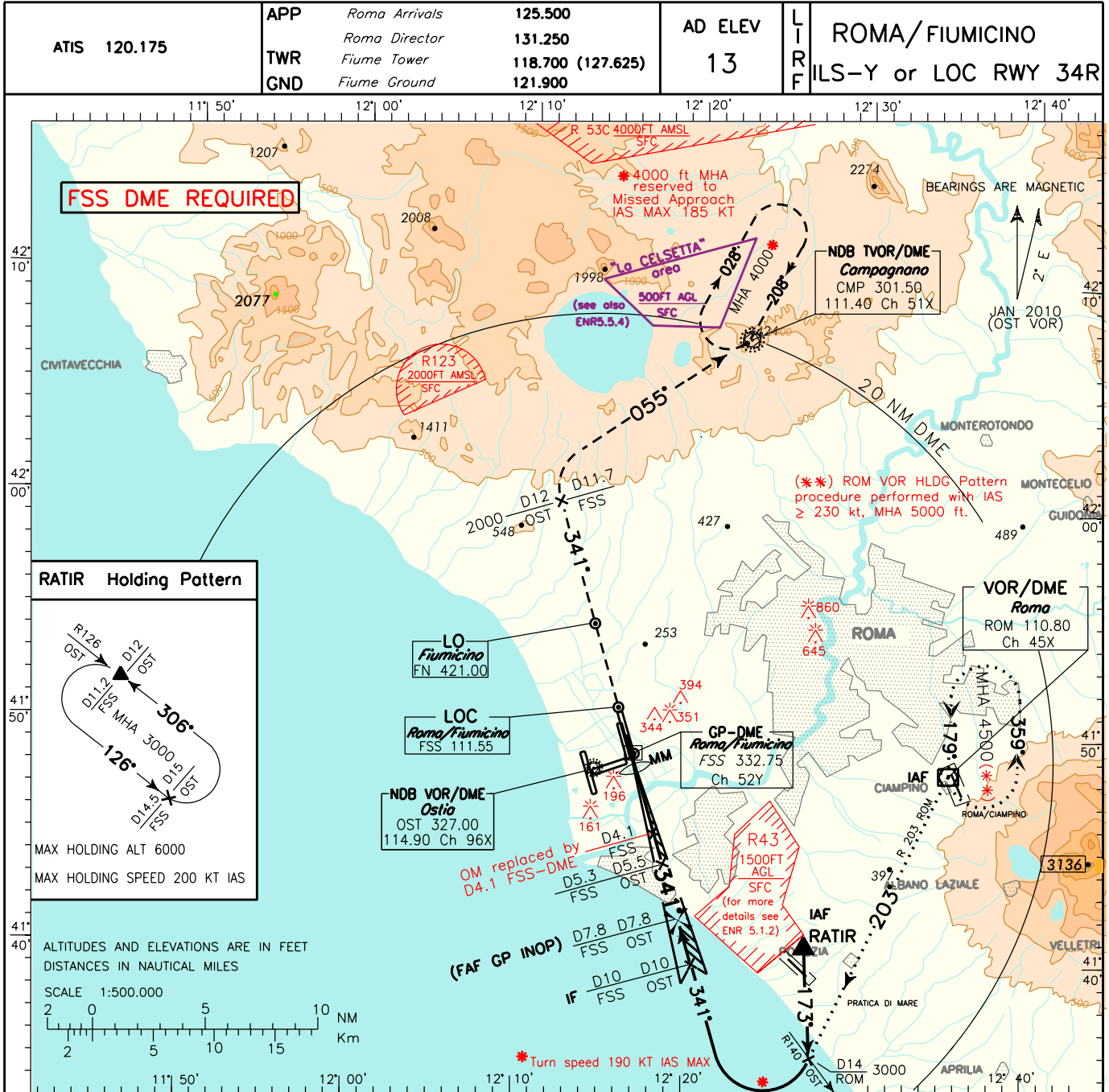
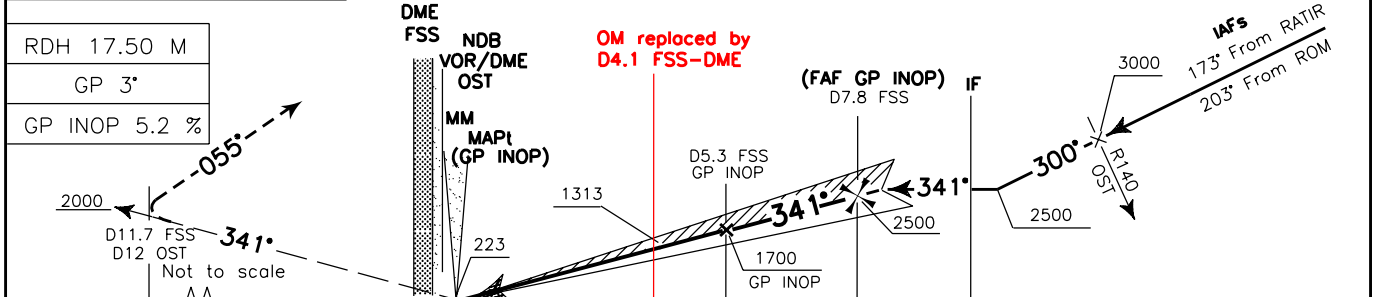


DOC. 8168 ED.5-2006 AMDT.4

CHANGE: ATS GEOGRAPHY UPDATED



**TRANSITION ALT 6000**  
**MISSED APPROACH:** Proceed on TR 341°, cross 12 NM OST DME at 2000 ft or above. Then turn right to CMP VOR climbing to 4000 ft.



<b>OST DME</b>	D3	D2	D1	D0	D0.7	D1	D2	D3	D4	D5	D6	D7	D8	D9	D10	D11	D12	D13	D14	<b>OST DME</b>	
<b>FSS DME</b>																					<b>FSS DME</b>

<b>OCA(OCH)</b>		A	B	C	D
<b>STRAIGHT IN APPROACH</b>	<b>ILS CAT I</b>	170 (165)	180 (175)	190 (185)	200 (195)
	<b>LOC</b>	420 (415)			
<b>CIRCLING</b>		800 (787)		900 (887)	

<b>FT per MIN</b>	<b>GS</b>	<b>FAF-D4.1</b>	<b>D4.1-MM</b>
420	80	2 : 47	2 : 32
525	100	2 : 13	2 : 02
630	120	1 : 51	1 : 42
735	140	1 : 35	1 : 27
845	160	1 : 23	1 : 17

