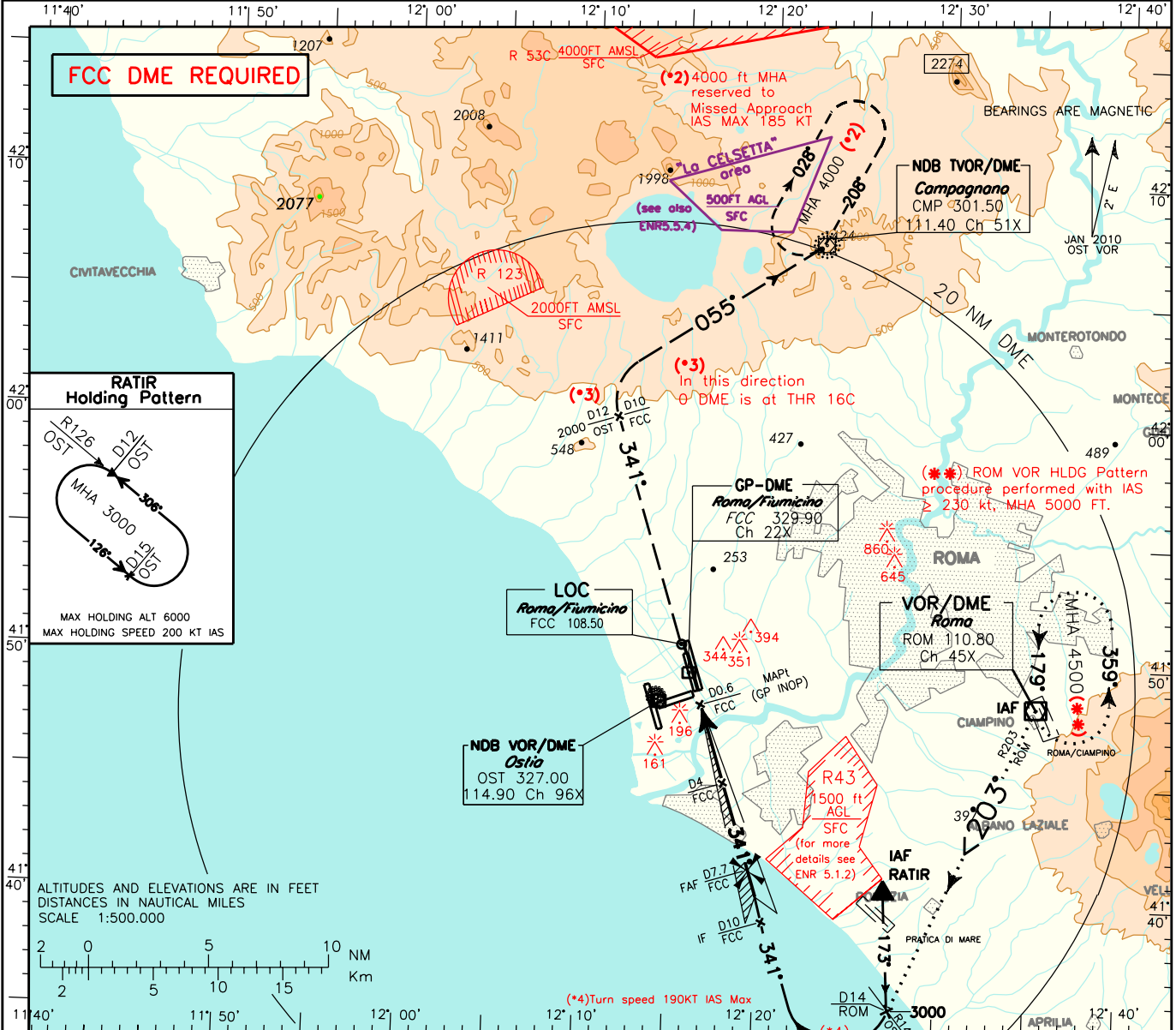


DOC 8168 ED.5-2006 AMDT.4

CHANGE: ATS GEOGRAPHY UPDATED

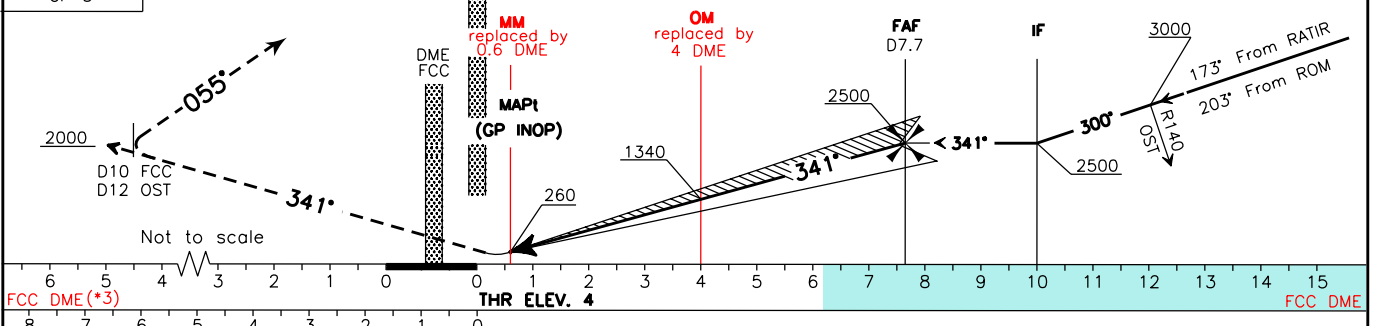
| | | | | | |
|---------------------|---|----------------|-----------|-------------|------------------------|
| ATIS 120.175 | APP <i>Roma Arrivals</i> 125.500 <i>Roma Director</i> 131.250 | AD ELEV | 13 | LIRF | ROMA/ FIUMICINO |
| | TWR <i>Fiume Tower</i> 118.700 (127.625) GND <i>Fiume Ground</i> 121.900 | | | | ILS-Y RWY 34C |



TRANSITION ALT 6000

RDH 17.00 M
GP 3'

MISSED APPROACH: Proceed on TR 341°; cross 12 NM OST DME (or 10 NM FCC DME) at 2000 ft or above. Then turn right to CMP VOR NDB climbing to 4000 ft.



| STRAIGHT IN APPROACH | OCA(OCH) | | | | DIST | ILS | FT per MIN | GS | FAF-D4 3.65 NM | D4-D0.6 3.4 NM | MNM SECT ALT OST VOR NDB |
|----------------------|-----------|---|-----------|---|-------|------------|------------|-----|-------------------|-------------------|-----------------------------|
| | A | B | C | D | | | | | | | |
| ILS Cat I | 200 (196) | | | | 7 DME | 2290(2286) | 425 | 80 | 2:44 | 2:33 | |
| LOC | 420 (416) | | | | 6 DME | 1980(1976) | 530 | 100 | 2:11 | 2:02 | |
| | | | | | 5 DME | 1660(1656) | 635 | 120 | 1:50 | 1:42 | |
| | | | | | 4 DME | 1340(1336) | 740 | 140 | 1:34 | 1:27 | |
| | | | | | 3 DME | 1020(1016) | 850 | 160 | 1:22 | 1:17 | |
| | | | | | 2 DME | 700(696) | 955 | 180 | 1:13 | 1:08 | |
| CIRCLING | 800 (787) | | 900 (887) | | 1 DME | 390(386) | | | | | |