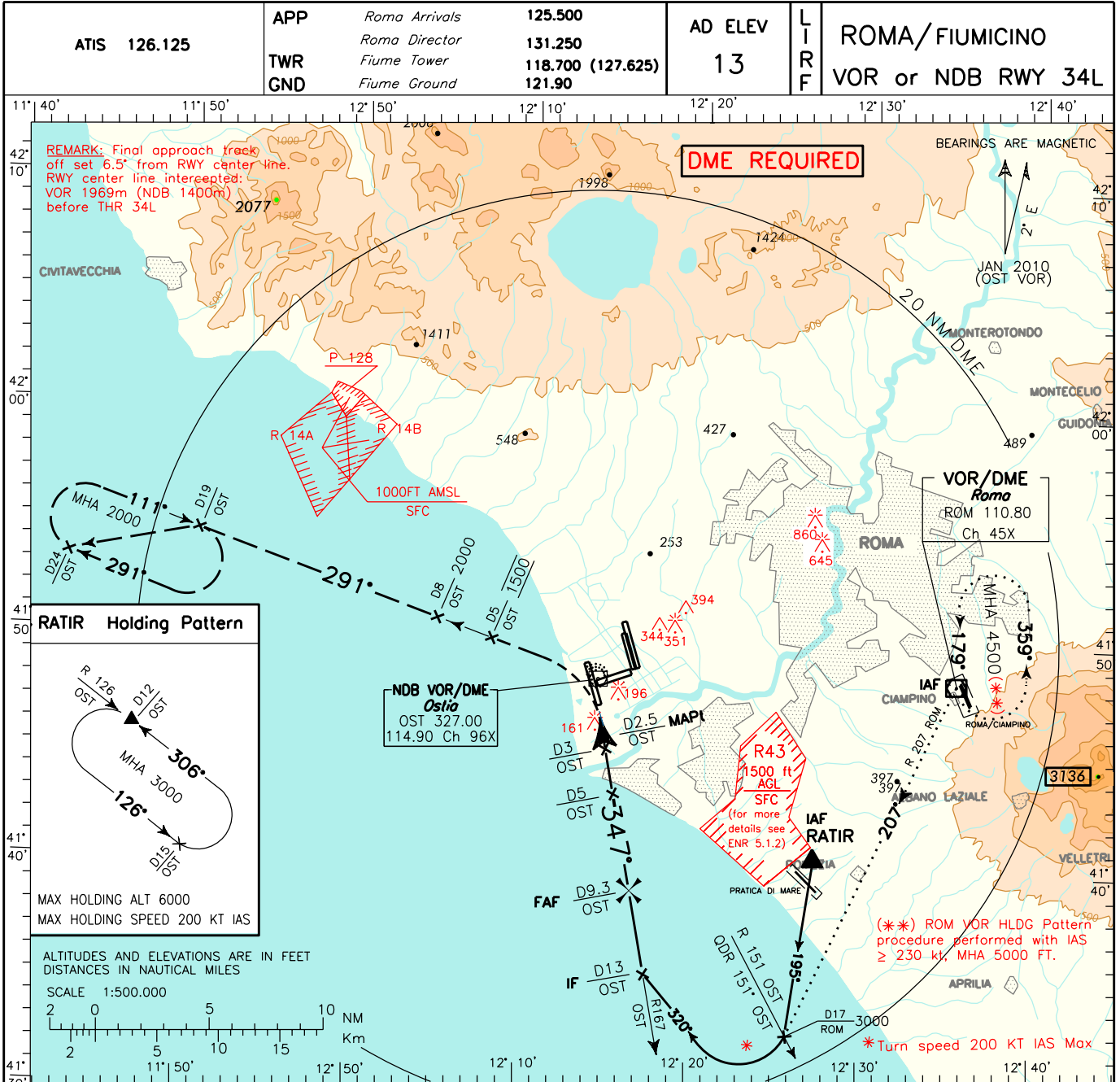


ICAO - INSTRUMENT APPROACH CHART

AD 2 LIRF 5-31

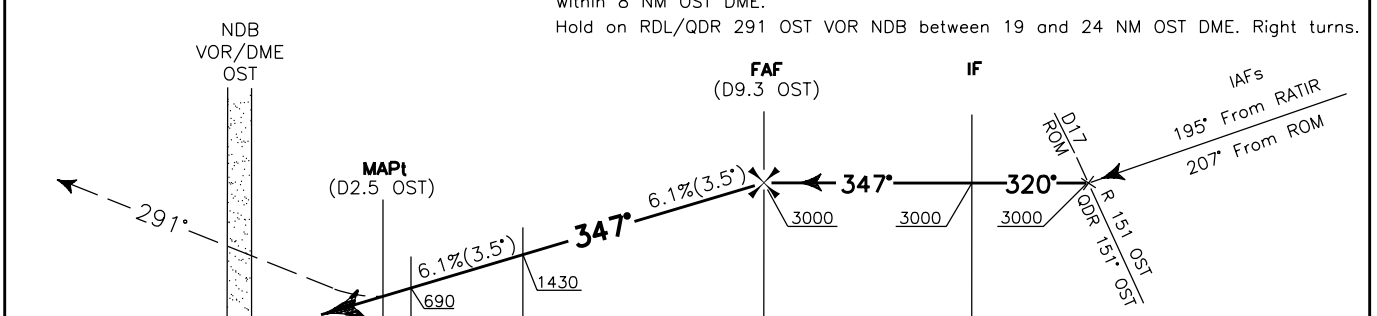
DOC. 8168 ED.5-2006 AMDT 4

CHANGE: ATS GEOGRAPHY UPDATED



TRANSITION ALT 6000

MISSED APPROACH: At 2.5 NM OST DME turn left to join RDL/QDR 291 OST VOR NDB climbing and maintaining 1500 ft until 5 NM OST DME, then climb to 2000 ft to be reached within 8 NM OST DME. Hold on RDL/QDR 291 OST VOR NDB between 19 and 24 NM OST DME. Right turns.



OST DME	THR Elev 8	D2	D3	D4	D5	D6	D7	D8	D9	D10	D11	D12	D13	D14	D15	D16	D17	D18	OST DME				
NM	4	3	2	1	0	1	2	3	4	5	6	7	8	9	10	11	12	13	14	15	16	17	NM

STRAIGHT IN APPROACH	OCA(OCH)				FT per MIN	GS	FAF-MAPt	MAPt-THR	OST DME	ALT (HGT)	MNM SECT ALT
	A	B	C	D							
VOR+DME	500 (487)				494	80	5 : 01	0 : 54	7 DME	2540(2532)	
NDB+DME	500 (487)				618	100	4 : 01	0 : 43	6 DME	1800(1792)	
					741	120	3 : 21	0 : 36	5 DME	1430(1422)	
					865	140	2 : 52	0 : 31	4 DME	1060(1052)	
CIRCLING	800 (787)		900 (887)		988	160	2 : 31	0 : 27	3 DME	690 (682)	