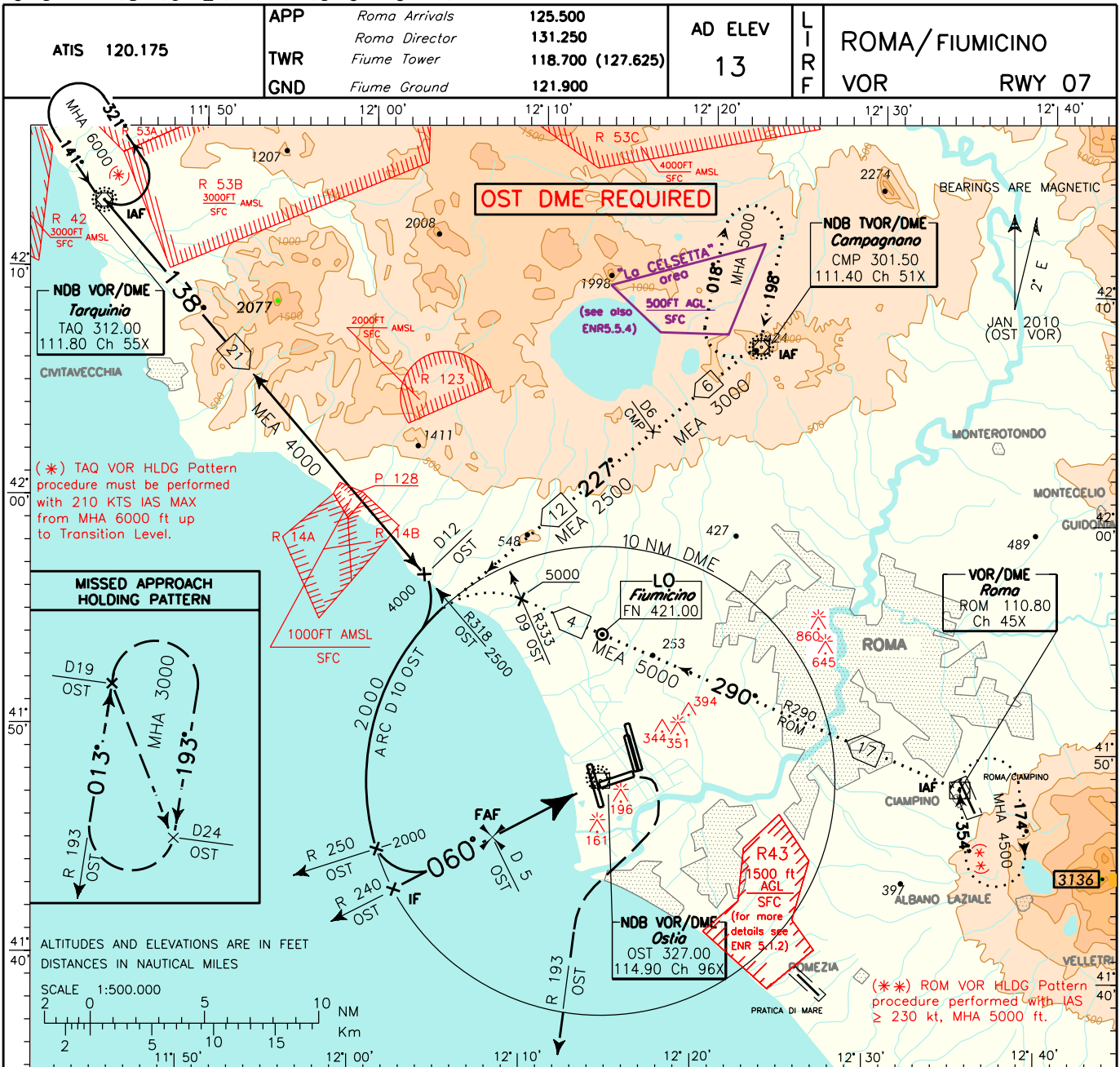
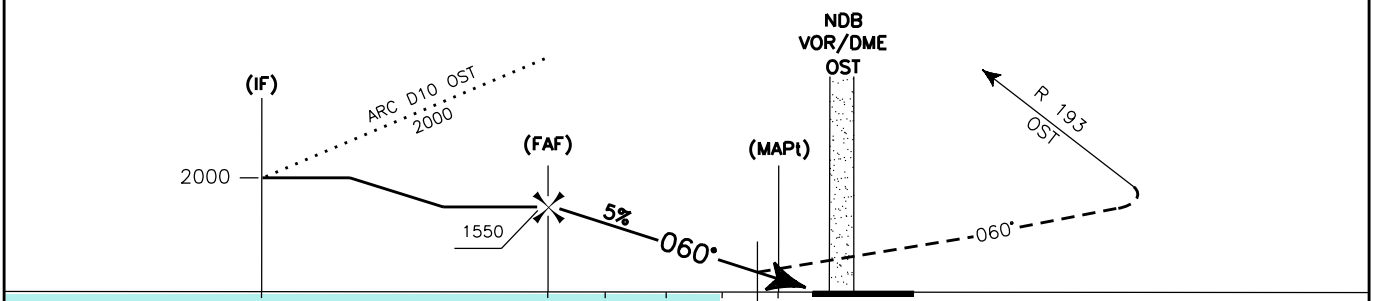


DOC. 8168 ED.5-2006 AMDT 4

CHANGE: ATS GEOGRAPHY UPDATED



TRANSITION ALT 6000 MISSED APPROACH: 1 NM before OST DME climb to 500 ft on TR 060°; then turn right on RDL 193 OST VOR climbing to 2000 ft, to be reached within 9 NM OST DME, then continue climbing to 3000 ft. Hold on RDL 193 OST VOR between 19 and 24 NM OST DME. Right turns. IAS ≤ 200 kt during turn.



OST DME					THR Elev 7					OST DME									
NM					NM					NM									
OCA(OCH)																			
A					B					C									
D																			
STRAIGHT IN APPROACH	VOR	400 (387)				FT per MIN	GS	FAF-MAP	4 NM	DIST	ALT (HGT)	MNM SECT ALT	VOR NDB						
														405	80	3 : 00	5 DME	1550(1543)	
														505	100	2 : 24	4 DME	1250(1243)	
														610	120	2 : 00	3 DME	950 (943)	
				710	140	1 : 43	2 DME	650 (643)											
				810	160	1 : 30	1 DME	350 (343)											
CIRCLING		800 (787)				900 (887)													