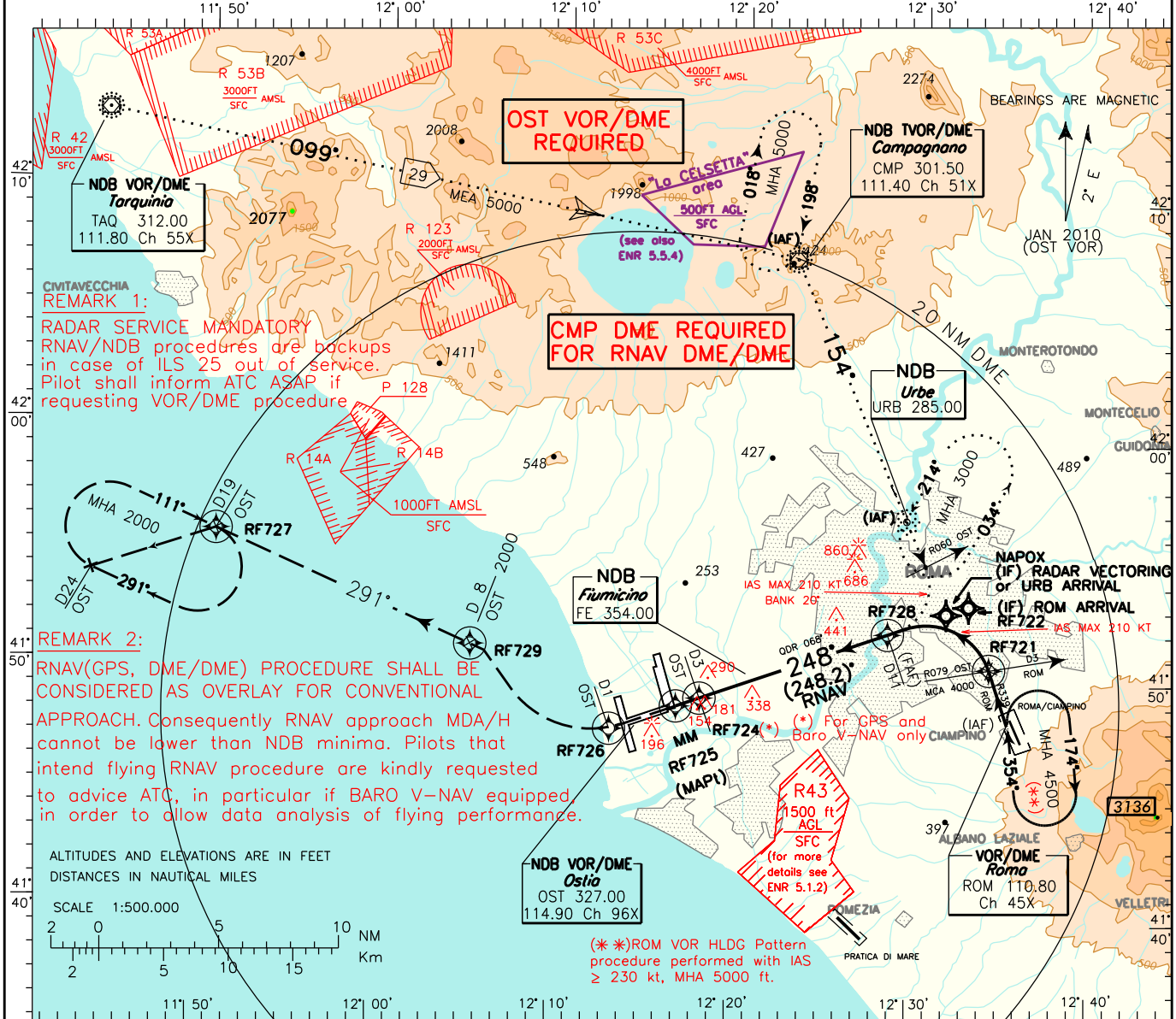


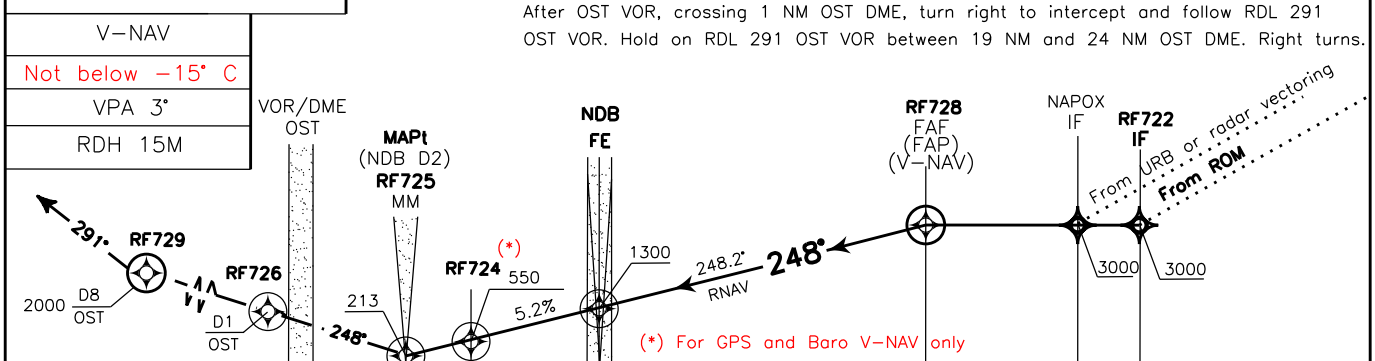
DOC. 8168 ED.5-2006 AMDT 4

CHANGE: ATS GEOGRAPHY UPDATED

ATIS 120.175 APP Roma Arrivals 125.500 Roma Director 131.250 TWR Fiume Tower 118.700 (127.625) GND Fiume Ground 121.900	AD ELEV 13 LIRF	ROMA/ FIUMICINO RNAV (GPS, DME/DME) or NDB RWY 25
---	----------------------------------	--



TRANSITION ALT 6000 MISSED APPROACH: Proceed on heading 248° climbing to 2000 ft to be reached within 8 NM OST DME. After OST VOR, crossing 1 NM OST DME, turn right to intercept and follow RDL 291 OST VOR. Hold on RDL 291 OST VOR between 19 NM and 24 NM OST DME. Right turns.



OST DME		THR Elev 5	D2	D3	D4	D5	D6	D7	D8	D9	D10	D11	D12	D13	OST DME
NM															

STRAIGHT IN APPROACH	OCA(OCH)		A/B/C/D		BARO V-NAV A/B/C/D NA BELOW -15 °C		FT per MIN	GS	FAF-MAPT	MAPT-THR	DME OST	ALT (HGT)	MNM SECT ALT	
	GPS	DME/DME	NDB	A	B	C							D	OST
STRAIGHT IN APPROACH	GPS	480 (475)			430 (425)		425	80	9.3 NM	0.5 NM	6 NM	1820 (1815)		
	DME/DME	550 (545)			480 (475)		530	100	7 : 00	0 : 22	6 NM	1500 (1495)		
	NDB	550 (545)			NA		635	120	5 : 36	0 : 18	5 NM	1180 (1175)		
							740	140	4 : 40	0 : 15	4 NM	860 (855)		
CIRCLING		800 (787)		900 (887)		850	160	3 : 30	0 : 11	3 NM	550 (545)			

Path Terminator	Waypoint Name	Fly Over	Track °Mag	Turn Direction	Altitude Constraint (ft)	Length (NM)	Speed Limit (kt)/ Bank Angle	Recommended Navaid	Vertical Angle/ THR Crossing Height (ft)	Bearing/ Range from Navaid (NM)	Navigation Performance
IF	TAQ	-	-	-	+5000	-	-	-	-	-	GPS-DME/DME
TF (IF)	CMP	-	098.9°	R	+5000	-	-	-	-	-	GPS-DME/DME
TF (IF)	URB	-	153.9°	-	+3000	-	-	-	-	-	GPS-DME/DME
TF	NAPOX	N	153.9°	R	+3000	-	210/20°	-	-	-	GPS-DME/DME
TF	RF728	-	248.2°	-	+3000	-	-	-	-	-	GPS-DME/DME
TF	FE	-	248.2°	-	+1300	-	-	-	-	-	GPS-DME/DME
TF	RF724	-	248.2°	-	+550	-	-	-	-	-	GPS-DME/DME
TF	RF725 MAPt	Y	248.2°	-	(1)	-	-	-	-	-	GPS-DME/DME
-	RWY25	-	248.2°	-	-	-	-	-	-3.0°/50	-	GPS-DME/DME
CF	RF726	Y	248.2°	R	-	-	-	OST VOR/DME	-	238.3°/1	GPS-DME/DME
DF	RF729	Y	-	-	2000	-	-	OST VOR/DME	-	291°/8	GPS-DME/DME
HM ⁽²⁾	RF727	Y	291°	R	2000	5	-	OST VOR/DME	-	291°/19	GPS-DME/DME

Path Terminator	Waypoint Name	Fly Over	Track °Mag	Turn Direction	Altitude Constraint (ft)	Length (NM)	Speed Limit (kt)/ Bank Angle	Recommended Navaid	Vertical Angle/ THR Crossing Height (ft)	Bearing/ Range from Navaid (NM)	Navigation Performance
IF	ROM	-	-	-	+4500	-	-	-	-	-	GPS-DME/DME
TF	RF721	-	339°	-	+4000	-	-	-	-	-	GPS-DME/DME
TF	RF722	N	339°	L	+3000	-	-	-	-	-	GPS-DME/DME
TF	RF728	-	248.2°	-	+3000	-	-	-	-	-	GPS-DME/DME
TF	FE	-	248.2°	-	+1300	-	-	-	-	-	GPS-DME/DME
TF	RF724	-	248.2°	-	+550	-	-	-	-	-	GPS-DME/DME
TF	RF725 MAPt	Y	248.2°	-	(1)	-	-	-	-	-	GPS-DME/DME
-	RWY25	-	248.2°	-	-	-	-	-	-3.0°/50	-	GPS-DME/DME
CF	RF726	Y	248.2°	R	-	-	-	OST VOR/DME	-	238.3°/1	GPS-DME/DME
DF	RF729	Y	-	-	2000	-	-	OST VOR/DME	-	291°/8	GPS-DME/DME
HM ⁽²⁾	RF727	Y	291°	R	2000	5	-	OST VOR/DME	-	291°/19	GPS-DME/DME

⁽¹⁾ 480 ft GPS or 430 GPS-BaroV-NAV; 550 ft DME/DME or 480 ft DME/DME-BaroV-NAV

⁽²⁾ Holding entry from sector 2 (ref. DOC 8168 Vol 1 Part I Section 6 § 1.4.5 "Sector 2 entry")

Waypoints Table formatted according ARINC 424 standards

Waypoint	Latitude	Longitude
RF721	N41503296	E012341326
RF722	N41531135	E012325906
RF728	N41514531	E012274411
RF724	N41490637	E012180517
RF725	N41484486	E012164709
RF726	N41474370	E012130558
RF729	N41511824	E012042198
RF727	N41553058	E011504564