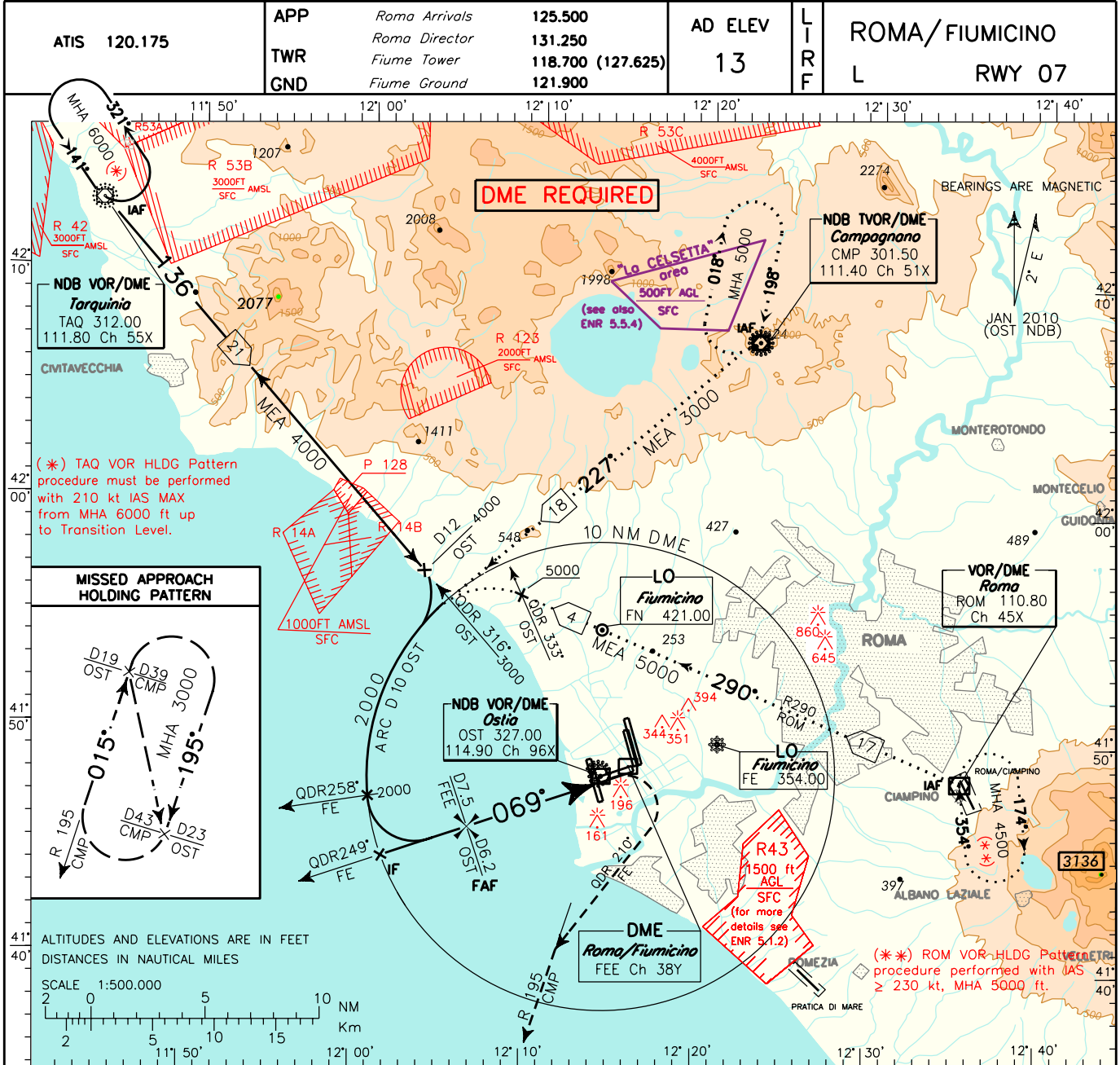


DOC. 8168 ED.5-2006 AMDT 4

CHANGE: ATS GEOGRAPHY UPDATED



TRANSITION ALT		6000	
MISSED APPROACH:		1 NM before OST DME turn right on QDR 210° FE L climbing to 2000 ft, to be reached within 9 NM OST DME (29 NM CMP DME), then continue climbing to 3000 ft on RDL 195 CMP VOR. Hold on RDL 195 CMP VOR between 39 and 43 NM CMP DME. Right Turns. IAS ≤ 200 kt during turn.	
OST DME		THR Elev 7	
NM		OST DME	
13 12 11 10 9 8 7 6 5 4 3 2 1 0 1 2 3 4 5 6 7 8 9		NM	
OCA(OCH)		A B C D	
L+DME		450 (437)	
STRAIGHT IN APPROACH		FT per MIN GS DIST OST DME ALT (HGT)	
CIRCLING		800 (787) 900 (887)	
		MNM SECT ALT OST NDB	