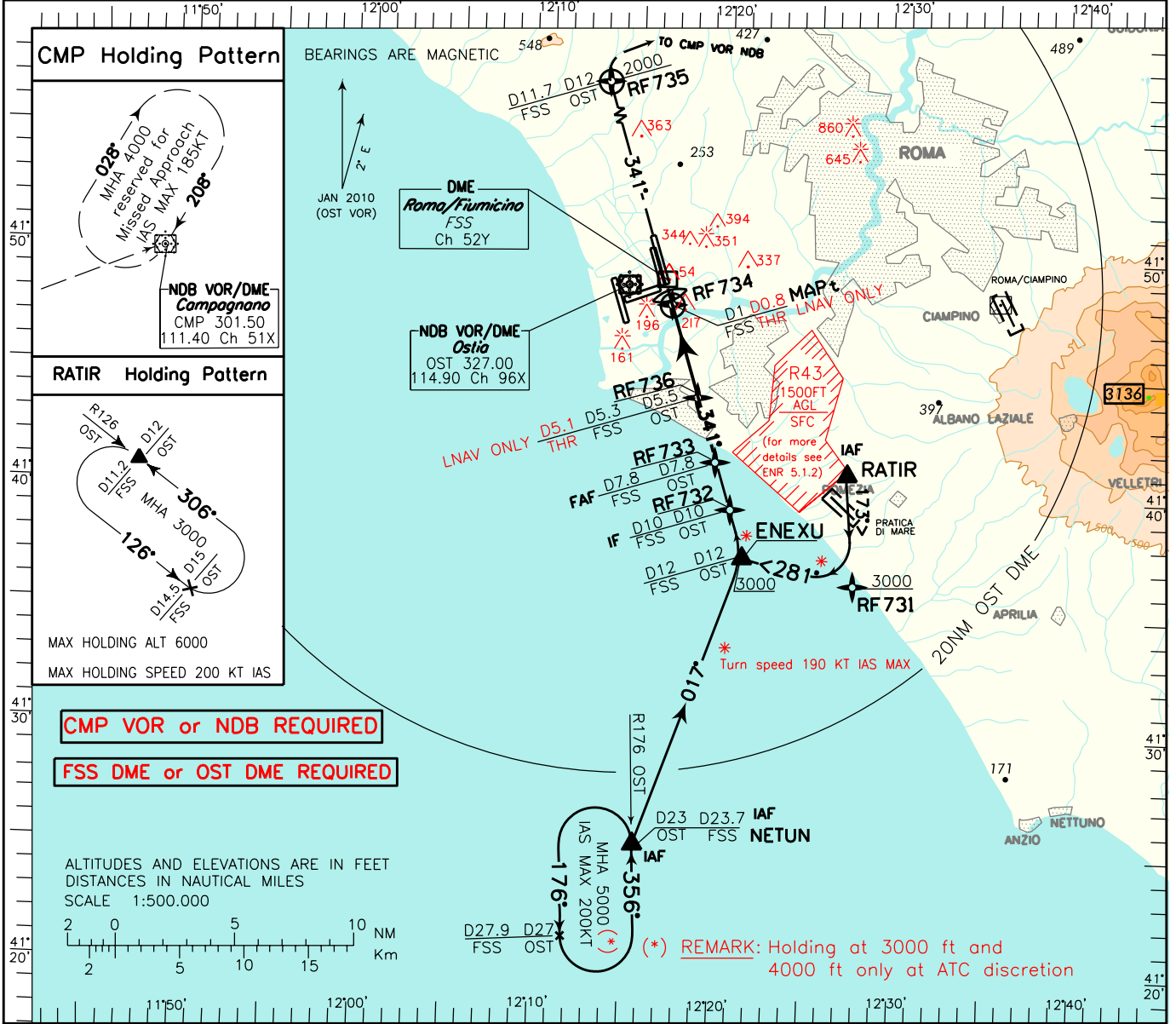


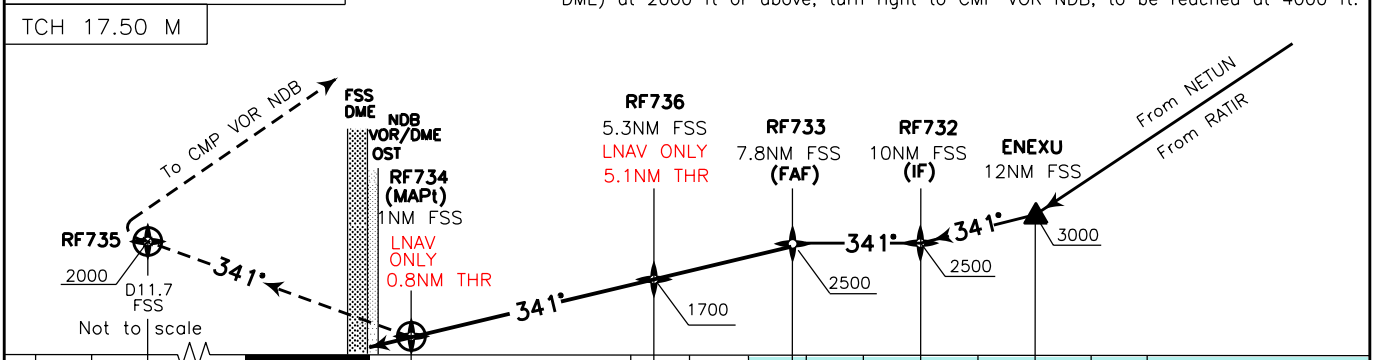
DOC. 8168 ED.5-2006 AMDT.4

CHANGE: MINIMA OCA(OCH) FOR STRAIGHT IN APPROACH FOR LPV FOR CAT A/B/C UPDATED

EGNOS CH 52841 E34A	APP Roma Arrivals Roma Director 125.500	AD ELEV 13	LIRF ROMA/FIUMICINO RNAV(GNSS) RWY 34R
	TWR Fiume Tower 118.700 (127.625)		
	GND Fiume Ground 121.900		
	ATIS 120.175		



TRANSITION ALT 6000
 MISSED APPROACH: Proceed on TR 341° climbing to 4000 ft. At (RF735) 12 NM OST DME (11.7 NM FSS DME) at 2000 ft or above, turn right to CMP VOR NDB, to be reached at 4000 ft.



STRAIGHT IN APPROACH	OCA(OCH)				FT per MIN	GS	FAF - MAPt		MAPt - THR	DIST THR	ALT (HGT)	MNM SECT ALT ARP
	A	B	C	D			GS	THR				
LPV	255 (250)	255 (250)	255 (250)	260 (255)	420	80	6.8 NM	0.8 NM	7	2292 (2287)		
	490 (485)				530	100	4 : 05	0 : 29	5	1654 (1649)		
					635	120	3 : 24	0 : 24	4	1336 (1331)		
					745	140	2 : 55	0 : 21	3	1018 (1013)		
					850	160	2 : 33	0 : 18	2	699 (694)		
CIRCLING	800 (787)				850	160	2 : 33		1	381 (376)		
	900 (887)						0 : 18					

Roma Fiumicino RNAV(GNSS) RWY34R – Instrument Approach procedure via NETUN

Path Terminator	Fix Identifier (Waypoint Name)	Fly Over	Course/Track °M (°T)	Turn Direction	Altitude	Speed Limit (kt)/ Bank Angle	Recommended Navaid	Bearing/ Range from Navaid (NM)
IF	NETUN	-	-	-	+5000	-	-	-
TF	ENEXU	-	017°(019.3°)	-	+3000	-	-	-
TF	RF732	-	341°(342.7°)	-	+2500	-	-	-
TF	RF733	-	341°(342.7°)	-	+2500	-	-	-
TF	RF736 ⁽¹⁾	-	341°(342.7°)	-	+1700	-	-	-
TF	RF734 MAPt ⁽¹⁾	Y	341°(342.7°)	-	+490 ⁽¹⁾	-	-	-
-	THR34R	-	341°(342.7°)	-	-	-	-	-
TF	RF735	Y	341°(342.7°)	-	+2000	-	-	-
DF	CMP	Y	-	R	+4000	185	-	-
HM	CMP	Y	208.0° (210.1°)	R	+4000	185	-	-

Roma Fiumicino RNAV(GNSS) RWY34R – Instrument Approach procedure via RATIR

Path Terminator	Fix Identifier (Waypoint Name)	Fly Over	Course/Track °M (°T)	Turn Direction	Altitude	Speed Limit (kt)/ Bank Angle	Recommended Navaid	Bearing/ Range from Navaid (NM)
IF	RATIR	-	-	-	+3000	-	-	-
TF	RF731	-	173°(175.1°)	-	+3000	190	-	-
TF	ENEXU	-	281°(282.6°)	R	+3000	190	-	-
TF	RF732	-	341°(342.7°)	-	+2500	-	-	-
TF	RF733	-	341°(342.7°)	-	+2500	-	-	-
TF	RF736 ⁽¹⁾	-	341°(342.7°)	-	+1700	-	-	-
TF	RF734 MAPt ⁽¹⁾	Y	341°(342.7°)	-	+490 ⁽¹⁾	-	-	-
-	THR34R	-	341°(342.7°)	-	-	-	-	-
TF	RF735	Y	341°(342.7°)	-	+2000	-	-	-
DF	CMP	Y	-	R	+4000	185	-	-
HM	CMP	Y	208.0° (210.1°)	R	+4000	185	-	-

(1) For LNAV Only

Waypoints Table formatted according ARINC 424 standards

Waypoint	Latitude	Longitude
RF731	N41362216	E012272826
RF732	N41392179	E012202669
RF733	N41412629	E012193490
RF734	N41475769	E012165157
RF735	N42000489	E012114661
RF736	N41435113	E012183450

SBAS FAS DATA BLOCK LIRF RNAV (GNSS) RWY34R

INPUT DATA	
PARAMETERS	VALUES
Operation Type	0
SBAS Provider	1
Airport Identifier	LIRF
Runway	34
Runway Direction	1
Approach Performance Designator	0
Route Indicator	
Reference Path Data Selector	0
Reference Path Identifier	E34A
LTP/FTP Latitude	414844.7950N
LTP/FTP Longitude	0121631.8910E
LTP/FTP Ellipsoidal Height (metres)	49,5
FPAP Latitude	415048.7165N
Delta FPAP Latitude (seconds)	123.9215
FPAP Longitude	0121540.0295E
Delta FPAP Longitude (seconds)	-51.8615
Threshold Crossing Height	57.4
TCH Units Selector	0
Glidepath Angle (degrees)	3
Course Width (metres)	105
Length Offset (metres)	104
HAL	40
VAL	50

OUTPUT DATA	
Data Block	10 06 12 09 0C 62 00 00 01 34 33 05 F6 A6 F1 11 26 A1 44 05 EF 15 23 C8 03 D5 6A FE 3E 02 2C 01 64 0D C8 FA 92 6E 2E 78
Calculated CRC Value	926E2E78

Intenzionalmente bianca

Intentionally left blank