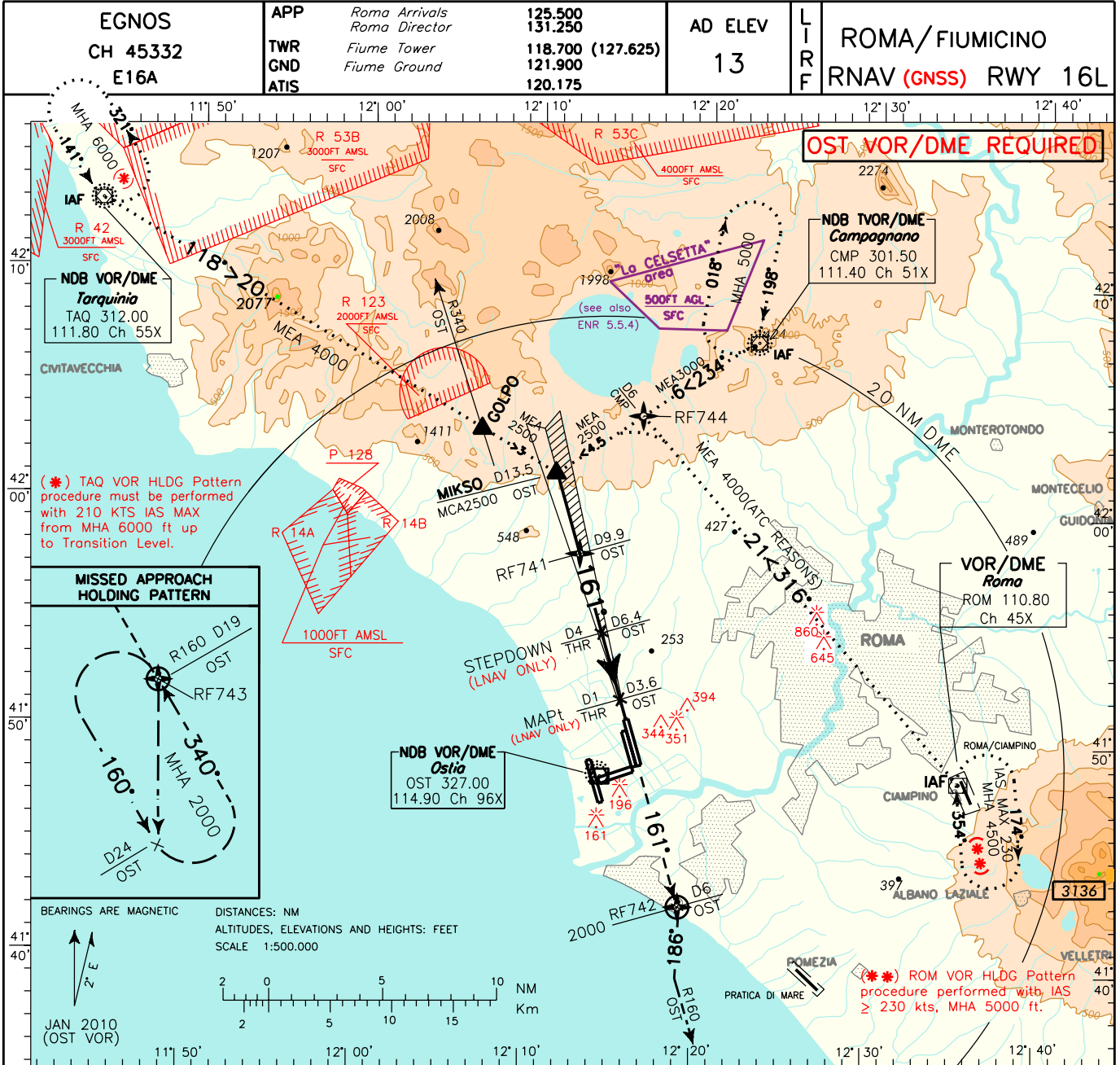


DOC. 8168 ED.5-2006 AMDT 4

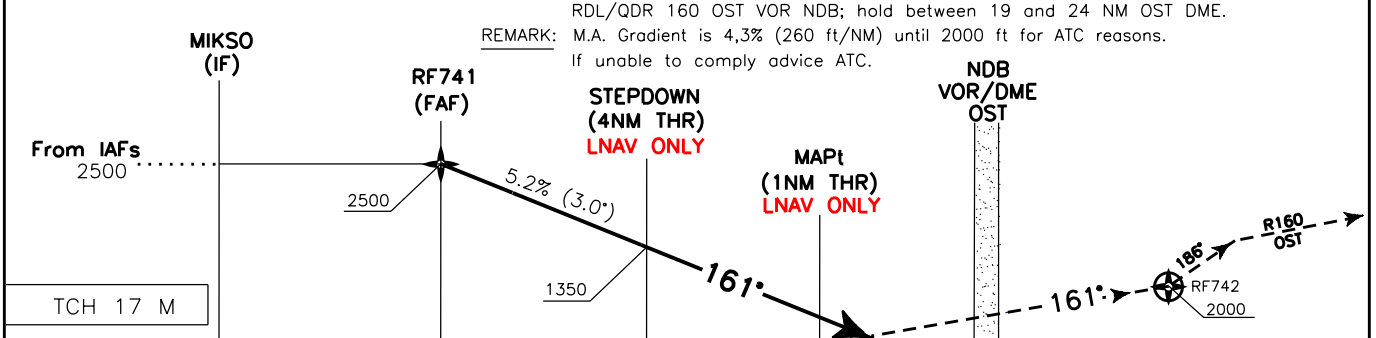
CHANGE: MISSED APPROACH DESCRIPTION UPDATED



**TRANSITION ALT 6000**

**MISSED APPROACH:** Proceed on RWY heading 161°, climb to 2000 ft; at (RF742) 6 NM OST DME to be reached at 2000 ft, turn right heading 186° (IAS MAX 185kt) to join RDL/QDR 160 OST VOR NDB; hold between 19 and 24 NM OST DME.

**REMARK:** M.A. Gradient is 4,3% (260 ft/NM) until 2000 ft for ATC reasons. If unable to comply advise ATC.



OST DME	D13.5	D9.9	D6.4	D3.6	THR Elev 13	OST DME																		
NM	14	13	12	11	10	9	8	7	6	5	4	3	2	1	0	1	2	3	4	5	6	7	8	NM

STRAIGHT IN APPROACH	OCA(OCH)	A	B	C	D	FT per MIN	GS	FAF-MAPt		MAPt-THR		DIST THR	ALT (HGT)	MNM SECT ALT 25NM ARP
		290 (277)	300 (287)	310 (297)	320 (307)			6.6 NM	1.0 NM					
LNAV		500 (487)				425	80	4 : 57	0 : 45	7	2300 (2287)			
						530	100	3 : 58	0 : 36	6	1980 (1967)			
						635	120	3 : 18	0 : 30	5	1660 (1647)			
						745	140	2 : 50	0 : 26	4	1345 (1332)			
						850	160	2 : 29	0 : 23	3	1025 (1012)			
CIRCLING		800 (787)		900 (887)						2	710 (697)			
										1	390 (377)			

## Roma Fiumicino RNAV(GNSS) RWY16L – Instrument Approach procedure via TAQ

Path Terminator	Fix Identifier (Waypoint Name)	Fly Over	Course/Track °M (°T)	Turn Direction	Altitude	Speed Limit (kt)/ Bank Angle	Recommended Navaid	Bearing/ Range from Navaid (NM)	Distance from THR	Remarks
IF	TAQ	-	-	-	+6000	-	-	-		
TF	GOLPO	-	118°(119.3°)	-	+4000	-	-	-		
TF	MIKSO	-	118°(119.3°)	-	+2500	-	-	-		
TF	RF741	-	161°(162.6°)	-	+2500	-	-	-		
-		-	161°(162.6°)	-	+1350	-	-	-	4NM	Stepdown fix (LNAV)
-		-	161°(162.6°)	-	+500	-	-	-	1NM	MAPt (LNAV)
-	THR16L	-	161°(162.6°)	-	-	-	-	-		
TF	RF742	Y	161°(162.6°)	-	+2000	-	-	-		
CF	RF743	Y	160°(162.0°)	-	+2000	185	OST VOR/DME	160°/19		
HM	RF743	Y	340.0° (342.0°)	L	+2000	-	OST VOR/DME	160°/19		

## Roma Fiumicino RNAV(GNSS) RWY16L – Instrument Approach procedure via CMP

Path Terminator	Fix Identifier (Waypoint Name)	Fly Over	Course/Track °M (°T)	Turn Direction	Altitude	Speed Limit (kt)/ Bank Angle	Recommended Navaid	Bearing/ Range from Navaid (NM)	Distance from THR	Remarks
IF	CMP	-	-	-	+5000	-	-	-		
TF	RF744	-	234°(235.7°)	-	+3000	-	-	-		
TF	MIKSO	-	234°(235.7°)	-	+2500	210	-	-		
TF	RF741	-	161°(162.6°)	-	+2500	-	-	-		
-		-	161°(162.6°)	-	+1350	-	-	-	4NM	Stepdown fix (LNAV)
-		-	161°(162.6°)	-	+500	-	-	-	1NM	MAPt (LNAV)
-	THR16L	-	161°(162.6°)	-	-	-	-	-		
TF	RF742	Y	161°(162.6°)	-	+2000	-	-	-		
CF	RF743	Y	160°(162.0°)	-	+2000	185	OST VOR/DME	160°/19		
HM	RF743	Y	340.0° (342.0°)	L	+2000	-	OST VOR/DME	160°/19		

## Roma Fiumicino RNAV(GNSS) RWY16L – Instrument Approach procedure via ROM

Path Terminator	Fix Identifier (Waypoint Name)	Fly Over	Course/Track °M (°T)	Turn Direction	Altitude	Speed Limit (kt)/ Bank Angle	Recommended Navaid	Bearing/ Range from Navaid (NM)	Distance from THR	Remarks
IF	ROM	-	-	-	+4500	-	-	-		
TF	RF744	-	316°(318.0°)	-	+4000	-	-	-		
TF	MIKSO	-	234°(235.7°)	-	+2500	210	-	-		
TF	RF741	-	161°(162.6°)	-	+2500	-	-	-		
-		-	161°(162.6°)	-	+1350	-	-	-	4NM	Stepdown fix (LNAV)
-		-	161°(162.6°)	-	+500	-	-	-	1NM	MAPt (LNAV)
-	THR16L	-	161°(162.6°)	-	-	-	-	-		
TF	RF742	Y	161°(162.6°)	-	+2000	-	-	-		
CF	RF743	Y	160°(162.0°)	-	+2000	185	OST VOR/DME	160°/19		
HM	RF743	Y	340.0° (342.0°)	L	+2000	-	OST VOR/DME	160°/19		

## Waypoints Table formatted according ARINC 424 standards

Waypoint	Latitude	Longitude
RF741	N41580252	E012123776
RF742	N41431783	E012184843
RF743	N41300918	E012220368
RF744	N42040226	E012161410

## SBAS FAS DATA BLOCK LIRF RNAV (GNSS) RWY16L

INPUT DATA	
PARAMETERS	VALUES
Operation Type	0
SBAS Provider	1
Airport Identifier	LIRF
Runway	16
Runway Direction	3
Approach Performance Designator	0
Route Indicator	
Reference Path Data Selector	0
Reference Path Identifier	E16A
LTP/FTP Latitude	415045.4900N
LTP/FTP Longitude	0121541.3810E
LTP/FTP Ellipsoidal Height (metres)	52.2
FPAP Latitude	414842.4365N
Delta FPAP Latitude (seconds)	-123.0535
FPAP Longitude	0121632.8770E
Delta FPAP Longitude (seconds)	51.4960
Threshold Crossing Height	17.0
TCH Units Selector	1
Glidepath Angle (degrees)	3.00
Course Width (metres)	105.00
Length Offset (metres)	80
HAL	40.0
VAL	50.0

OUTPUT DATA	
Data Block	10 06 12 09 0C D0 00 00 01 36 31 05 E4 55 F5 11 8A 16 43 05 0A 16 A5 3E FC 50 92 01 54 81 2C 01 64 0A C8 FA B4 91 43 84
Calculated CRC Value	B4914384

Intenzionalmente bianca

*Intentionally left blank*