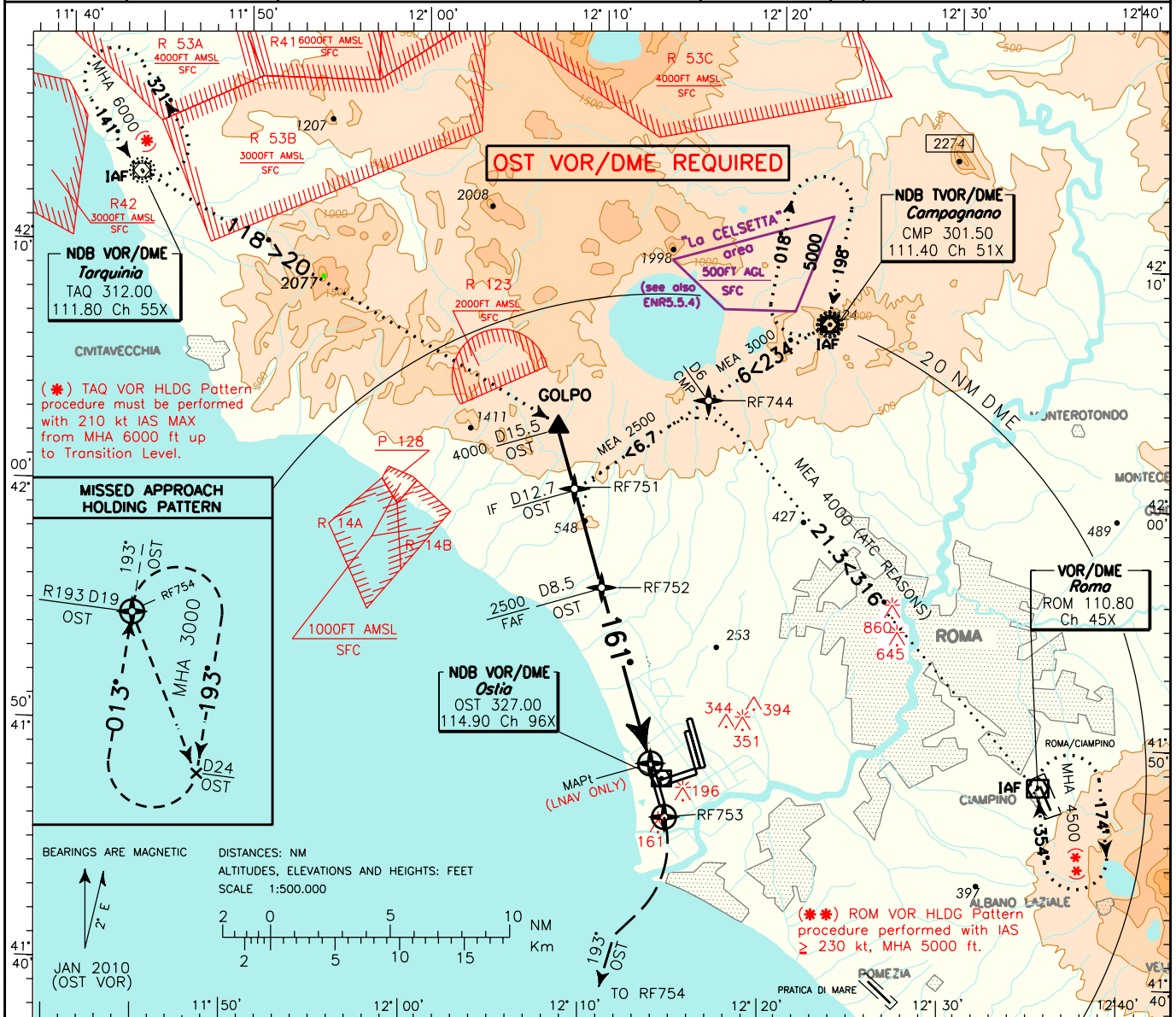


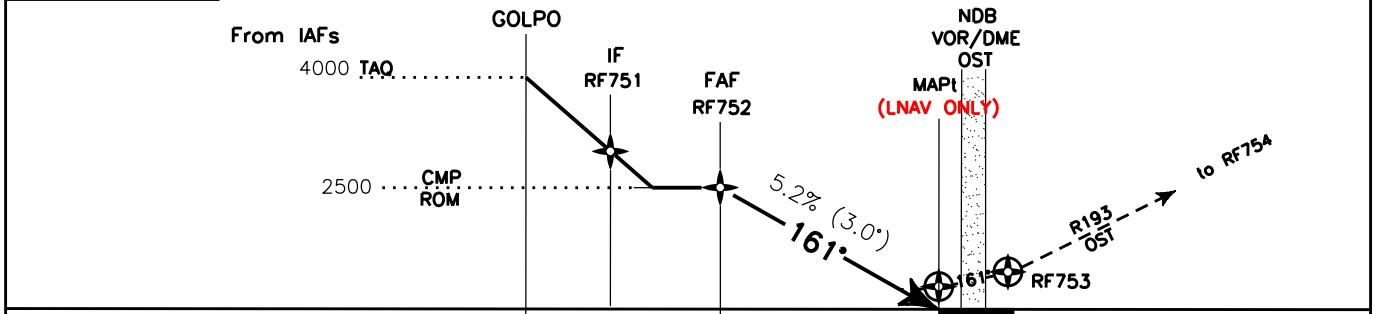
CHANGE: MINIMA OCA(OCH) FOR STRAIGHT IN APPROACH FOR LPV FOR CAT A UPDATED

EGNOS CH 46168 E16B	ATIS 126.125	APP Roma Arrivals Roma Director	125.500 131.250	AD ELEV 13	LIRF	ROMA/FIUMICINO	
		TWR Fiume Tower GND Fiume Ground	118.700 (127.625) 121.900			RNAV (GNSS)	RWY 16R



TRANSITION ALT 6000 MISSED APPROACH: Proceed on RWY heading 161°, climbing to 3000FT. AT RF 753 (D1.5 after OST DME) turn right on track 193° (RDL/QDR 193 OST VOR NDB) bound to RF754. Hold between 19 and 24 NM OST DME. Cross 2000 ft not further than 9 NM OST DME.

TCH 17.5 M



OST DME	D15.5	D12.7	D8.5	THR Elev 7	OST DME												
NM	18	16	14	12	10	8	6	4	2	0	2	4	6	8	10	12	14

STRAIGHT IN APPROACH	OCA(OCH)	A				B				C				D				FT per MIN	GS	FAF-THR	DIST	ALT(HGT)	MNM SECT	ARP
		260 (253)	260 (253)	270 (263)	280 (273)	260 (253)	260 (253)	270 (263)	280 (273)	260 (253)	260 (253)	270 (263)	280 (273)	260 (253)	260 (253)	270 (263)	280 (273)							
LPV	260 (253)	260 (253)				270 (263)				280 (273)				425	80	5 : 42	6NM	2290(2283)	25NM	3300	220	5600		
		420 (407)				530	100	4 : 34	5NM	1655(1648)														
LNAV	260 (253)	260 (253)				270 (263)				280 (273)				635	120	3 : 48	4NM	1335(1328)	2000	120	310			
		420 (407)				745	140	3 : 15	3NM	1020(1013)														
CIRCLING	800 (787)	800 (787)				900 (887)				850	160	2 : 51	2NM	700(693)										

Roma Fiumicino RNAV(GNSS) RWY16R – Instrument Approach procedure via TAQ

Path Terminator	Fix Identifier (Waypoint Name)	Fly Over	Course/Track °M (°T)	Turn Direction	Altitude	Speed Limit (kt)/ Bank Angle	Recommended Navaid	Bearing/ Range from Navaid (NM)
IF	TAQ	-	-	-	+6000	-	-	-
TF	GOLPO	-	118°(119.3°)	-	+4000	-	-	-
TF	RF751	-	161°(162.6°)	-	+3000	-	-	-
TF	RF752	-	161°(162.6°)	-	2500	-	-	-
TF	THR16R	Y	161°(162.6°)	-		-	-	-
TF	RF753	Y	161°(162.6°)	-	+450	-	-	-
CF	RF754	Y	193°(195.0°)	-	+3000	-	OST VOR/DME	193°/19
HM	RF754	Y	013°(015.0°)	R	+3000	-	OST VOR/DME	193°/19

Roma Fiumicino RNAV(GNSS) RWY16R – Instrument Approach procedure via CMP

Path Terminator	Fix Identifier (Waypoint Name)	Fly Over	Course/Track °M (°T)	Turn Direction	Altitude	Speed Limit (kt)/ Bank Angle	Recommended Navaid	Bearing/ Range from Navaid (NM)
IF	CMP	-	-	-	+5000	-	-	-
TF	RF744	-	234°(235.7°)	-	+3000	-	-	-
TF	RF751	-	234°(235.7°)	-	+3000	210	-	-
TF	RF752	-	161°(162.6°)	-	2500	-	-	-
TF	THR16R	Y	161°(162.6°)	-		-	-	-
TF	RF753	Y	161°(162.6°)	-	+450	-	-	-
CF	RF754	Y	193°(195.0°)	-	+3000	-	OST VOR/DME	193°/19
HM	RF754	Y	013°(015.0°)	R	+3000	-	OST VOR/DME	193°/19

Roma Fiumicino RNAV(GNSS) RWY16R – Instrument Approach procedure via ROM

Path Terminator	Fix Identifier (Waypoint Name)	Fly Over	Course/Track °M (°T)	Turn Direction	Altitude	Speed Limit (kt)/ Bank Angle	Recommended Navaid	Bearing/ Range from Navaid (NM)
IF	ROM	-	-	-	+4500	-	-	-
TF	RF744	-	316°(318.0°)	-	+4000	-	-	-
TF	RF751	-	234°(235.7°)	-	+3000	210	-	-
TF	RF752	-	161°(162.6°)	-	2500	-	-	-
TF	THR16R	-	161°(162.6°)	-		-	-	-
TF	RF753	Y	161°(162.6°)	-	+450	-	-	-
CF	RF754	Y	193°(195.0°)	-	+3000	-	OST VOR/DME	193°/19
HM	RF754	Y	013°(015.0°)	R	+3000	-	OST VOR/DME	193°/19

Waypoints Table formatted according ARINC 424 standards

Waypoint	Latitude	Longitude
RF744	N42040226	E012161410
RF751	N42001732	E012084834
RF752	N41561388	E012103102
RF753	N41464373	E012143023
RF754	N41295210	E012074254

SBAS FAS DATA BLOCK LIRF RNAV (GNSS) RWY16R

INPUT DATA	
PARAMETERS	VALUES
Operation Type	0
SBAS Provider	1
Airport Identifier	LIRF
Runway	16
Runway Direction	1
Approach Performance Designator	0
Route Indicator	
Reference Path Data Selector	0
Reference Path Identifier	E16B
LTP/FTP Latitude	414855.8640N
LTP/FTP Longitude	0121334.9135E
LTP/FTP Ellipsoidal Height (metres)	50.1
FPAP Latitude	414652.8815N
Delta FPAP Latitude (seconds)	-122.9825
FPAP Longitude	0121426.4050E
Delta FPAP Longitude (seconds)	51.4915
Threshold Crossing Height	57.4
TCH Units Selector	0
Glidepath Angle (degrees)	3
Course Width (metres)	105
Length Offset (metres)	744
HAL	40
VAL	50

OUTPUT DATA	
Data Block	10 06 12 09 0C 50 00 00 02 36 31 05 70 FD F1 11 83 3A 3F 05 F5 15 33 3F FC 47 92 01 3E 02 2C 01 64 5D C8 FA AC 75 B7 06
Calculated CRC Value	AC75B706

Intenzionalmente bianca

Intentionally left blank