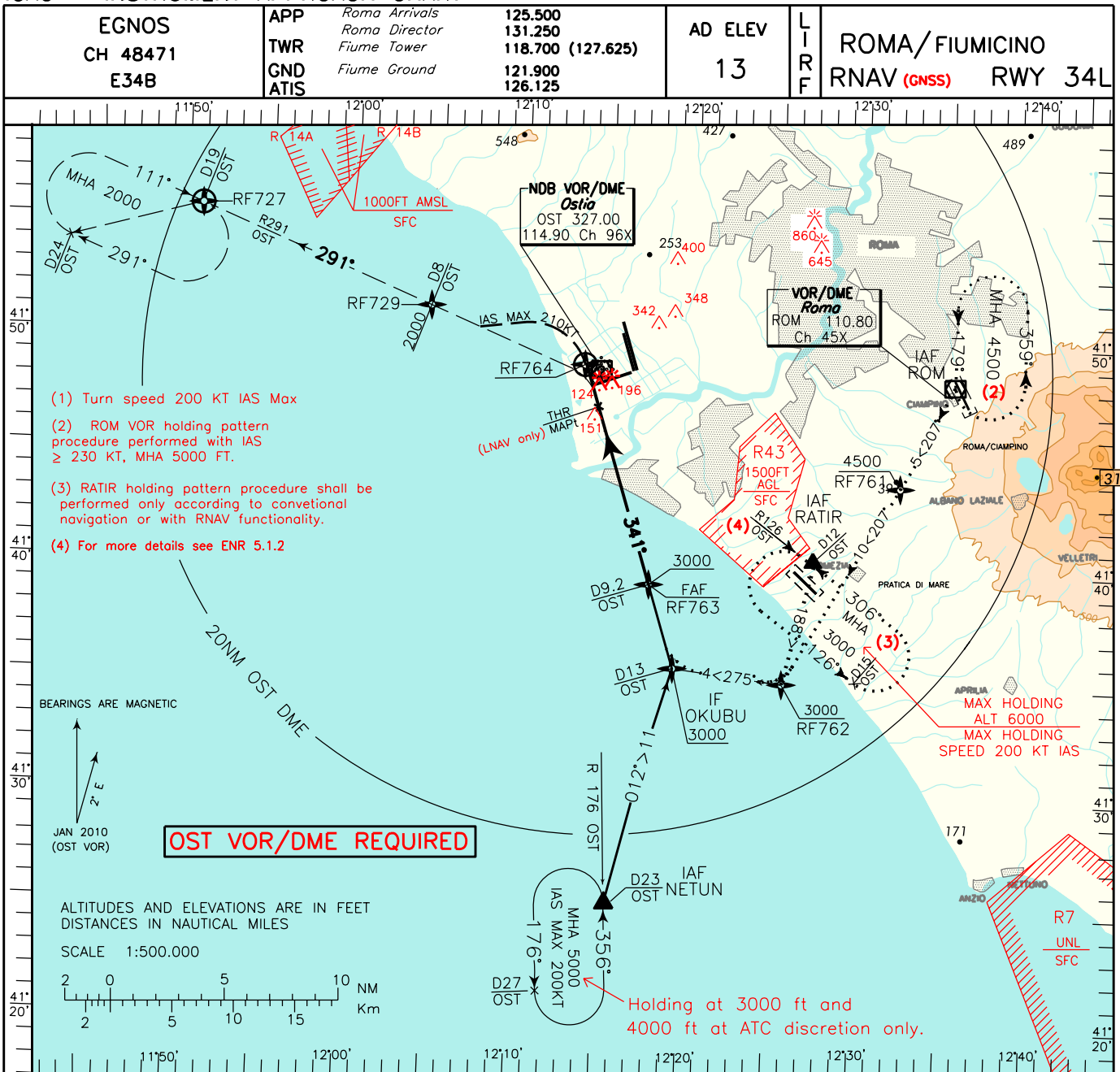


DOC. 8168 ED.5-2006 AMDT 4

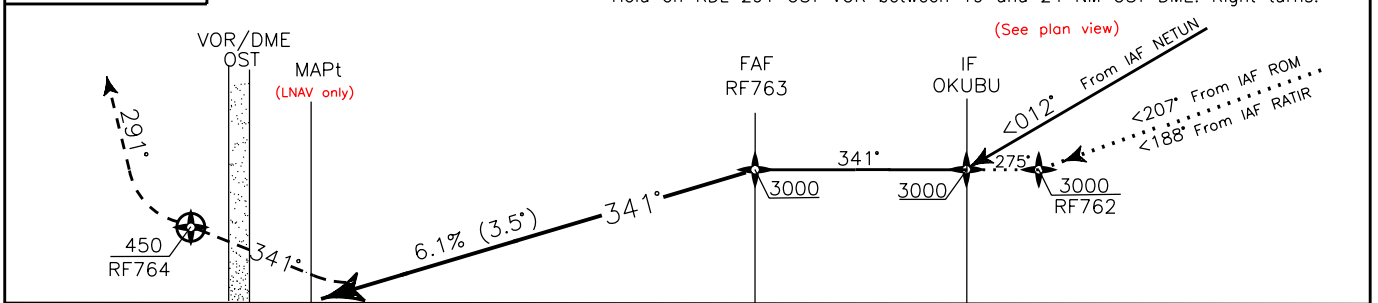
NEW CHART



**TRANSITION ALT 6000**

**TCH 17.50 M**

**MISSED APPROACH:** Proceed on RWY heading 341°, climb to 2000 ft; at RF764 (450ft) turn left to join RDL 291 OST VOR, then climb to 2000 ft to be reached at RF729 (8 NM OST DME). Hold on RDL 291 OST VOR between 19 and 24 NM OST DME. Right turns.



OST DME				THR Elev 8	D1	D2	D3	D4	D5	D6	D7	D8	D9	D10	D11	D12	D13	D14	D15	D16	OST DME								
NM					4	3	2	1	0	1	2	3	4	5	6	7	8	9	10	11	12	13	14	15	16	NM			

STRAIGHT IN APPROACH	OCA(OCH)				FT per MIN	GS	FAP-MAPT/THR	DIST THR	ALT (HEIGHT)	MNM SECT ALT	ARP
	A	B	C	D							
LPV	290 (282)	300 (292)	310 (302)	320 (312)	494	80	7.9 NM	7	2666 (2658)	25NM	
	410 (397)				618	100	5 : 56	6	2295 (2287)		
LNAV					741	120	4 : 44	5	1923 (1915)		
					865	140	3 : 57	4	1552 (1544)		
CIRCLING					988	160	3 : 23	3	1180 (1172)		
							2 : 58	2	808 (800)		
								1	437 (429)		

## Roma Fiumicino RNAV(GNSS) RWY34L – Instrument Approach procedure via ROM

Path Terminator	Fix Identifier (Waypoint Name)	Fly Over	Course/Track °M (°T)	Turn Direction	Altitude	Speed Limit (kt)/ Bank Angle	Recommended Navaid	Bearing/ Range from Navaid (NM)	Disatance from THR	Remarks
IF	ROM	-	-	-	+4500	-	-	-		
TF	RF761	-	207°(209.0°)	-	+4500	-	-	-		
TF	RF762	-	207°(209.0°)	-	+3000	-	-	-		
TF	OKUBU	-	275°(276.9°)	-	+3000	200	-	-		
TF	RF763	-	341°(342.6°)	-	+3000	-	-	-		
	THR34L	Y	341°(342.6°)	-		-	-	-		MAPt (LNAV)
TF	RF764	Y	341°(342.6°)	-	+450	-	-	-		
CF	RF729	-	291°(292.6°)	-	+2000	210	OST VOR/DME	291°/8		
TF	RF727	Y	291°(292.6°)	-	+2000	-	OST VOR/DME	291°/19		
HM	RF727	Y	291°(292.6°)	R	+2000	-	OST VOR/DME	291°/19		

## Roma Fiumicino RNAV(GNSS) RWY34L – Instrument Approach procedure via RATIR

Path Terminator	Fix Identifier (Waypoint Name)	Fly Over	Course/Track °M (°T)	Turn Direction	Altitude	Speed Limit (kt)/ Bank Angle	Recommended Navaid	Bearing/ Range from Navaid (NM)	Disatance from THR	Remarks
IF	RATIR	-	-	-	+3000	-	-	-		
TF	RF762	-	188°(190.0°)	-	+3000	-	-	-		
TF	OKUBU	-	275°(276.9°)	-	+3000	200	-	-		
TF	RF763	-	341°(342.6°)	-	+3000	-	-	-		
	THR34L	Y	341°(342.6°)	-		-	-	-		MAPt (LNAV)
TF	RF764	Y	341°(342.6°)	-	+450	-	-	-		
CF	RF729	-	291°(292.6°)	-	+2000	210	OST VOR/DME	291°/8		
TF	RF727	Y	291°(292.6°)	-	+2000	-	OST VOR/DME	291°/19		
HM	RF727	Y	291°(292.6°)	R	+2000	-	OST VOR/DME	291°/19		

## Roma Fiumicino RNAV(GNSS) RWY34L – Instrument Approach procedure via NETUN

Path Terminator	Fix Identifier (Waypoint Name)	Fly Over	Course/Track °M (°T)	Turn Direction	Altitude	Speed Limit (kt)/ Bank Angle	Recommended Navaid	Bearing/ Range from Navaid (NM)	Disatance from THR	Remarks
IF	NETUN	-	-	-	+5000	-	-	-		
TF	OKUBU	-	012°(014.2°)	-	+3000	-	-	-		
TF	RF763	-	341°(342.6°)	-	+3000	-	-	-		
	THR34L	Y	341°(342.6°)	-		-	-	-		MAPt (LNAV)
TF	RF764	Y	341°(342.6°)	-	+450	-	-	-		
CF	RF729	-	291°(292.6°)	-	+2000	210	OST VOR/DME	291°/8		
TF	RF727	Y	291°(292.6°)	-	+2000	-	OST VOR/DME	291°/19		
HM	RF727	Y	291°(292.6°)	R	+2000	-	OST VOR/DME	291°/19		

## Waypoints Table formatted according ARINC 424 standards

Waypoint	Latitude	Longitude
RF761	N41435535	E012320358
RF762	N41350923	E012253569
RF763	N41392282	E012173432
RF764	N41485884	E012133367
RF729	N41511824	E012042198
RF727	N41553058	E011504564

## SBAS FAS DATA BLOCK LIRF RNAV (GNSS) RWY34L

INPUT DATA	
PARAMETERS	VALUES
Operation Type MAPt	0
SBAS Provider	1
Airport Identifier	LIRF
Runway	34
Runway Direction	3
Approach Performance Designator	0
Route Indicator	
Reference Path Data Selector	0
Reference Path Identifier	E34B
LTP/FTP Latitude	414655.1755N
LTP/FTP Longitude	0121425.4450E
LTP/FTP Ellipsoidal Height (metres)	50.4
FPAP Latitude	414857.4130N
Delta FPAP Latitude (seconds)	122.2375
FPAP Longitude	0121334.2650E
Delta FPAP Longitude (seconds)	-51.1800
Threshold Crossing Height	17.50
TCH Units Selector	1
Glidepath Angle (degrees)	3.50
Course Width (metres)	105.00
Length Offset (metres)	48
HAL	40.0
VAL	50.0

OUTPUT DATA	
Data Block	10 06 12 09 0C E2 00 00 02 34 33 05 8F 4E EE 11 4A C5 40 05 F8 15 FB BA 03 28 70 FE 5E 81 5E 01 64 06 C8 FA F4 23 34 CC
Calculated CRC Value	F42334CC

Intenzionalmente bianca

*Intentionally left blank*