

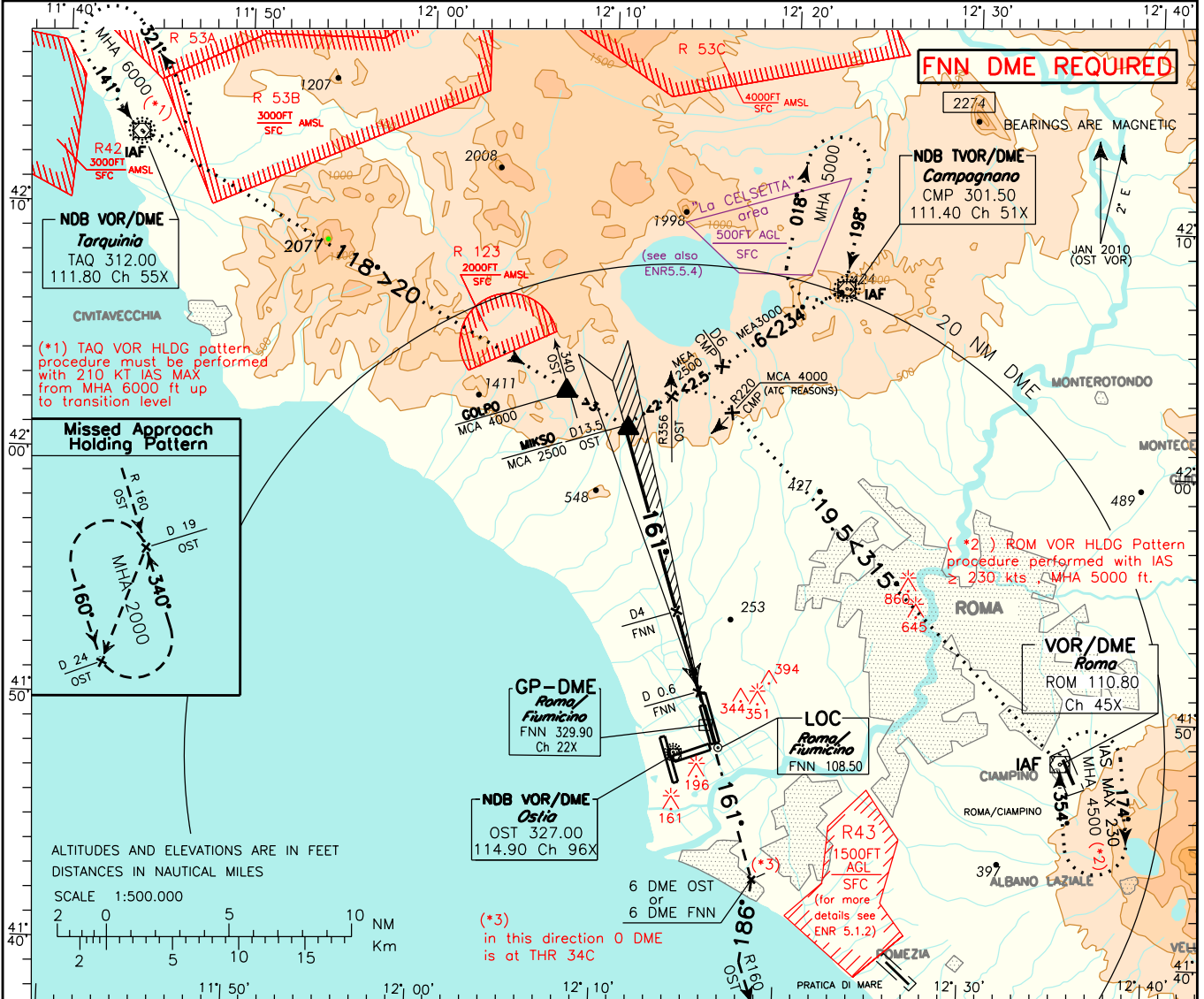
ICAO - INSTRUMENT APPROACH CHART

AD 2 LIRF 5-9

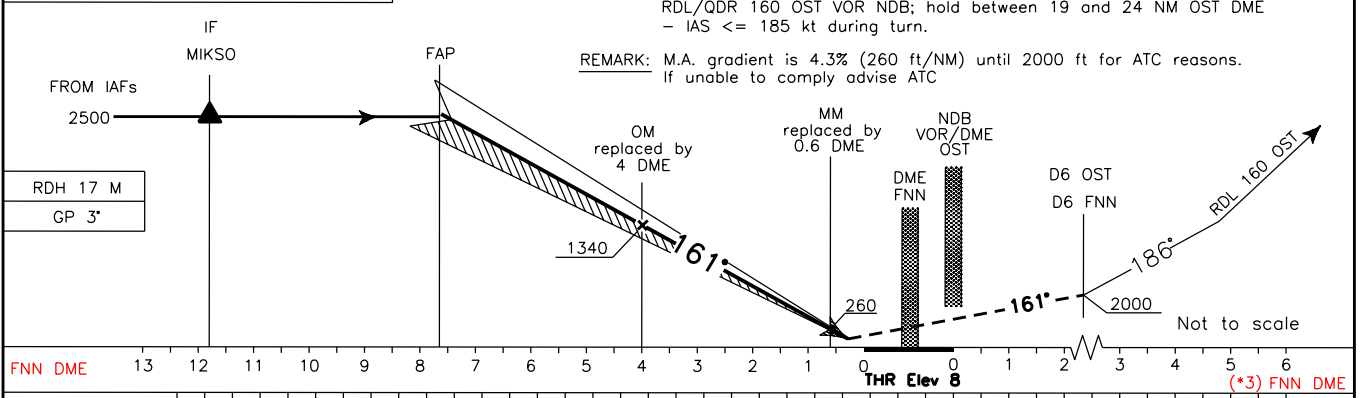
DOC. 8168 ED.5-2006 AMDT 4

CHANGE: ATS GEOGRAPHY UPDATED

<b>ATIS</b> 120.175	<b>APP</b> Roma Arrivals <b>125.500</b> Roma Director <b>131.250</b>	<b>AD ELEV</b> <b>13</b>	<b>LIRF</b>	<b>ROMA/ FIUMICINO</b> <b>ILS RWY 16C</b>
	<b>TWR</b> Fiume Tower <b>118.700 (127.625)</b>			
	<b>GND</b> Fiume Ground <b>121.900</b>			



TRANSITION ALT 6000  
 MISSED APPROACH: Proceed on RWY heading 161°, climb to 2000 ft; at 6 NM OST DME or 6 NM FNN DME to be reached at 2000 ft, turn right heading 186° to join RDL/QDR 160 OST VOR NDB; hold between 19 and 24 NM OST DME - IAS ≤ 185 kt during turn.



FNN DME	13	12	11	10	9	8	7	6	5	4	3	2	1	0	1	2	3	4	5	6	
OST DME	14	13	12	11	10	9	8	7	6	5	4	3	2	1	0	1	2	3	4	5	6

OCA(OCH)		A	B	C	D	DIST		ILS	FT per MIN	GS	FAP-D4	D4-D0.6	MNM SECT ALT OST VOR NDB 
STRAIGHT IN APPROACH	ILS Cat I	179(171)	189(181)	204(196)	214(206)	7 DME	2300(2292)	425	80	2:44	2:33		
						6 DME	1980(1972)	530	100	2:11	2:02		
						5 DME	1660(1652)	635	120	1:50	1:42		
						4 DME	1340(1332)	740	140	1:34	1:27		
CIRCLING		800(787)		900(887)		3 DME	1020(1012)	850	160	1:22	1:17		
						2 DME	710(702)	955	180	1:13	1:08		
						1 DME	390(382)						