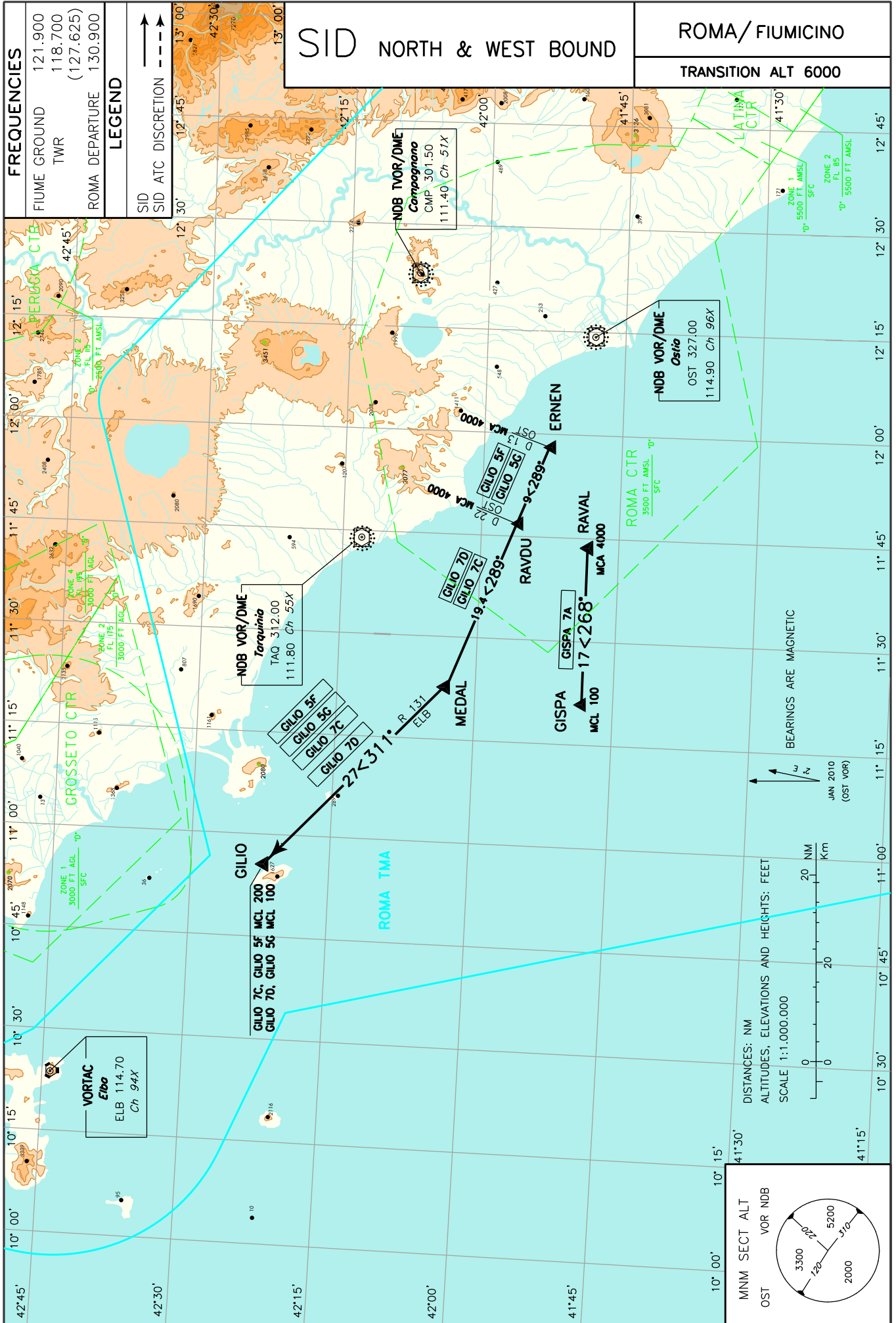


CHANGE: SID AGASA 7A WITHDRAWN - MSA BOX and ATS GEOGRAPHY ADDED



DESCRIZIONE DELLE SID**SID DESCRIPTION****GILIO 7C (disponibile solamente per il traffico diretto a LIML via UQ 704)****GILIO 7C (available only for traffic bound to LIML via UQ 704)**

Procedere via RAVDU - MEDAL quindi virare a destra su TR 311° (RDL 131 ELB VOR) diretti al punto GILIO.

Proceed via RAVDU – MEDAL then turn right on TR 311° (RDL 131 ELB VOR) bound to GILIO.

MCA/MCL: RAVDU 4000FT; GILIO FL 200

| Path Terminator | Waypoint Name | Track °Mag | Turn Direction | MCL/ MCA | Speed Limit | Recommended Navaid | Bearing/ Range to Navaid | Navigation Performance |
|-----------------|---------------|------------|----------------|----------|-------------|--------------------|--------------------------|------------------------|
| IF | RAVDU | - | - | 4000 | | - | - | Conventional/ P-RNAV |
| TF | MEDAL | 289° | - | - | - | - | - | Conventional/ P-RNAV |
| TF | GILIO | 311° | - | FL200 | - | - | - | Conventional/ P-RNAV |

GILIO 7D**GILIO 7D**

Procedere via RAVDU - MEDAL quindi virare a destra su TR 311° (RDL 131 ELB VOR) diretti al punto GILIO.

Proceed via RAVDU – MEDAL then turn right on TR 311° (RDL 131 ELB VOR) bound to GILIO.

MCA/MCL: RAVDU 4000FT; GILIO FL 100

| Path Terminator | Waypoint Name | Track °Mag | Turn Direction | MCL/ MCA | Speed Limit | Recommended Navaid | Bearing/ Range to Navaid | Navigation Performance |
|-----------------|---------------|------------|----------------|----------|-------------|--------------------|--------------------------|------------------------|
| IF | RAVDU | - | - | 4000 | | - | - | Conventional/ P-RNAV |
| TF | MEDAL | 289° | - | - | - | - | - | Conventional/ P-RNAV |
| TF | GILIO | 311° | - | FL100 | - | - | - | Conventional/ P-RNAV |

GILIO 5F (disponibile solamente per il traffico diretto a LIML via UQ 704)**GILIO 5F (available only for traffic bound to LIML via UQ 704)**

Procedere via ERNEN – RAVDU – MEDAL quindi virare a destra su TR 311° (RDL 131 ELB VOR) diretti al punto GILIO.

Proceed via ERNEN – RAVDU – MEDAL then turn right on TR 311° (RDL 131 ELB VOR) bound to GILIO.

MCA/MCL: ERNEN 4000FT; GILIO FL 200

| Path Terminator | Waypoint Name | Track °Mag | Turn Direction | MCL/ MCA | Speed Limit | Recommended Navaid | Bearing/ Range to Navaid | Navigation Performance |
|-----------------|---------------|------------|----------------|----------|-------------|--------------------|--------------------------|------------------------|
| IF | ERNEN | - | - | 4000 | | - | - | Conventional/ P-RNAV |
| TF | RAVDU | 289° | - | 4000 | - | - | - | Conventional/ P-RNAV |
| TF | MEDAL | 289° | - | - | - | - | - | Conventional/ P-RNAV |
| TF | GILIO | 311° | - | FL200 | - | - | - | Conventional/ P-RNAV |

GILIO 5G

Procedere via ERNEN – RAVDU – MEDAL quindi virare a destra su TR 311° (RDL 131 ELB VOR) diretti al punto GILIO.

GILIO 5G

Proceed via ERNEN – RAVDU – MEDAL then turn right on TR 311° (RDL 131 ELB VOR) bound to GILIO.

MCA/MCL: ERNEN 4000FT; GILIO FL 100

| Path Terminator | Waypoint Name | Track °Mag | Turn Direction | MCL/ MCA | Speed Limit | Recommended Navaid | Bearing/ Range to Navaid | Navigation Performance |
|-----------------|---------------|------------|----------------|----------|-------------|--------------------|--------------------------|------------------------|
| IF | ERNEN | - | - | 4000 | | - | - | Conventional/ P-RNAV |
| TF | RAVDU | 289° | - | 4000 | - | - | - | Conventional/ P-RNAV |
| TF | MEDAL | 289° | - | - | - | - | - | Conventional/ P-RNAV |
| TF | GILIO | 311° | - | FL100 | - | - | - | Conventional/ P-RNAV |

**GISPA 7A**

Procedere via RAVAL – GISPA.

GISPA 7A

Proceed via RAVAL – GISPA.

MCA/MCL: RAVAL 4000 FT; GISPA FL 100

| Path Terminator | Waypoint Name | Track °Mag | Turn Direction | MCL/ MCA | Speed Limit | Recommended Navaid | Bearing/ Range to Navaid | Navigation Performance |
|-----------------|---------------|------------|----------------|----------|-------------|--------------------|--------------------------|------------------------|
| IF | RAVAL | - | - | 4000 | | - | - | Conventional/ P-RNAV |
| TF | GISPA | 268° | - | FL100 | - | - | - | Conventional/ P-RNAV |