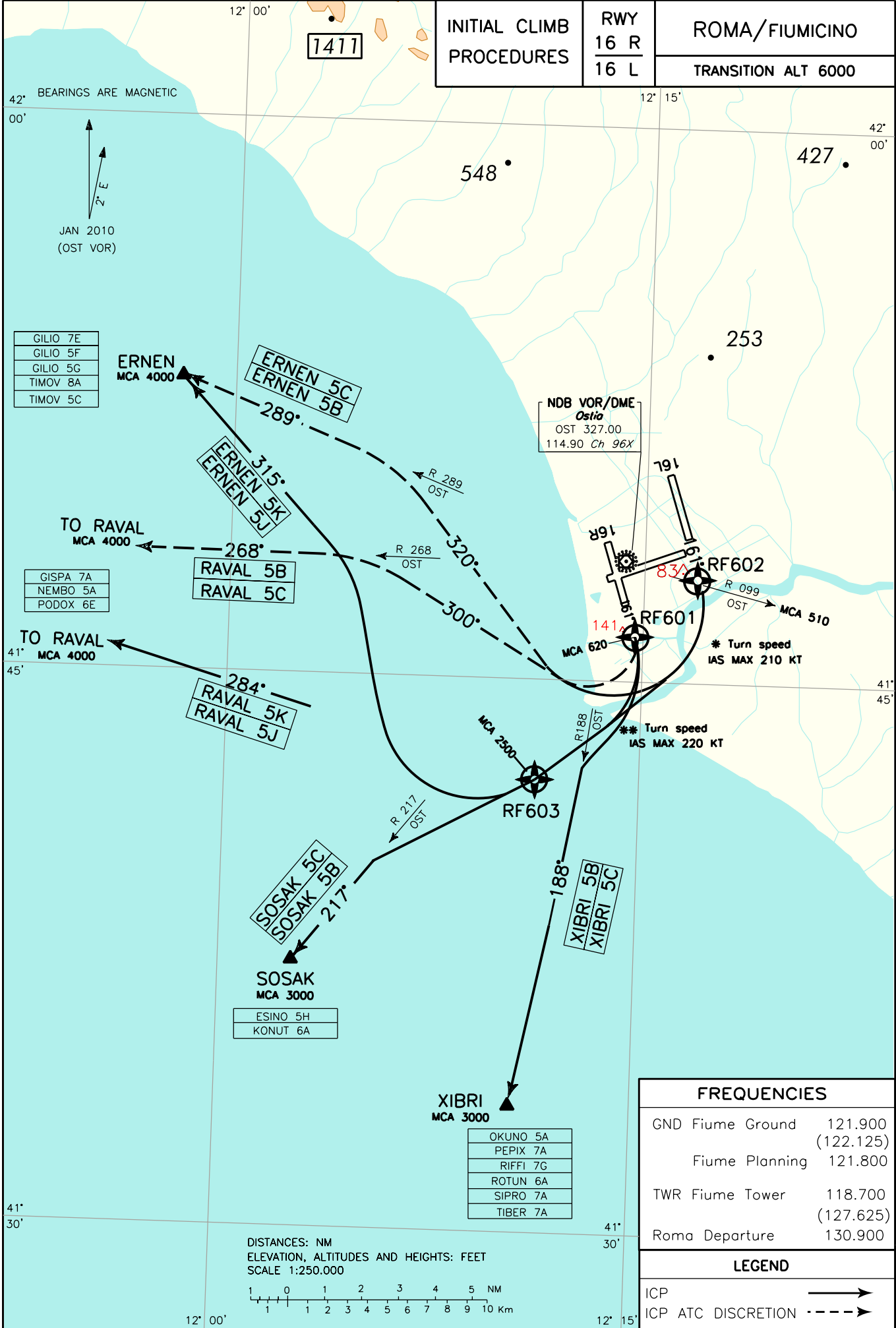


| | | |
|--------------------------|----------|----------------|
| INITIAL CLIMB PROCEDURES | RWY 16 R | ROMA/FIUMICINO |
| | 16 L | |



| FREQUENCIES | |
|--------------------|-------------------|
| GND Fiume Ground | 121.900 (122.125) |
| Fiume Planning | 121.800 |
| TWR Fiume Tower | 118.700 (127.625) |
| Roma Departure | 130.900 |
| LEGEND | |
| ICP | → |
| ICP ATC DISCRETION | - - - - - → |

PROCEDURE PER LA DIMINUZIONE DEL RUMORE

- a) RWY 16R (161°) – Applicare la tecnica dell'abbattimento del rumore.
- b) RWY 16L (161°) – Applicare la tecnica dell'abbattimento del rumore.
- c) Gli aeromobili non P-RNAV dovranno informare la torre di Fiumicino all'atto della messa in moto.
- d) Durante gli avvicinamenti indipendenti in corso per pista 16L/R gli aeromobili non P-RNAV pianificati via RAVAL – ERNEN saranno autorizzati inizialmente via SOSAK (RDL/QDR 217 OST VOR/NDB) e quindi indirizzati, compatibilmente con il traffico in atto, a mezzo radar verso il punto di uscita pianificato.
- e) I piloti devono adottare un gradiente minimo di salita conforme alle prescrizioni dell'Annesso 6-ICAO per un sicuro sorvolo degli ostacoli. Tale gradiente deve essere mantenuto in ogni circostanza prevedibile.

RWY 16R**XIBRI 5B**

Dopo il decollo mantenere prua pista fino a 2NM OST DME (MCA 620ft) quindi virare a destra (IAS MAX 220 kt) su RDL/QDR 188 OST VOR/NDB per il punto XIBRI

MCA: RF601 620FT; XIBRI 3000FT

| Path Terminator | Waypoint Name | Fly Over | Track °Mag | Turn Direction | MCA/MCL | Speed Limit (IAS) | Recommended Navaid | Bearing/Range to Navaid | Navigation Performance |
|-----------------|---------------|----------|------------|----------------|---------|-------------------|--------------------|-------------------------|------------------------|
| CA | - | - | 161° | - | 410 | - | - | - | Conventional/P-RNAV |
| DF | RF601 | Y | - | - | 620 | 220 | - | - | Conventional/P-RNAV |
| CF | XIBRI | - | 188° | - | 3000 | - | OST VOR/NDB/DME | RDL/QDR 188°/D15 | Conventional/P-RNAV |

SOSAK 5B

Dopo il decollo mantenere prua pista fino a 2NM OST DME (MCA 620ft) quindi virare a destra (IAS MAX 220 kt) su RDL/QDR 217 OST VOR/NDB per il punto SOSAK.

MCA: RF601 620FT; SOSAK 3000FT

| Path Terminator | Waypoint Name | Fly Over | Track °Mag | Turn Direction | MCA/MCL | Speed Limit (IAS) | Recommended Navaid | Bearing/Range to Navaid | Navigation Performance |
|-----------------|---------------|----------|------------|----------------|---------|-------------------|--------------------|-------------------------|------------------------|
| CA | - | - | 161° | - | 410 | - | - | - | Conventional/P-RNAV |
| DF | RF601 | Y | - | - | 620 | 220 | - | - | Conventional/P-RNAV |
| DF | RF603 | Y | - | - | - | - | - | - | Conventional/P-RNAV |
| CF | SOSAK | - | 217° | - | 3000 | - | OST VOR/NDB | RDL/QDR 217°/D14 | Conventional/P-RNAV |

RAVAL 5B (a discrezione ATC)

Dopo il decollo mantenere prua pista fino a 2NM OST DME (MCA 620FT) quindi virare a destra (IAS MAX 220 kt) per RDL/QDR 268 OST VOR/NDB per il punto RAVAL

MCA: RF601 620FT; RAVAL 4000FT

NOISE ABATEMENT PROCEDURES

- a) RWY 16R (161°) – Apply noise abatement technique.
- b) RWY 16L (161°) – Apply noise abatement technique.
- c) Non P-RNAV equipped aircraft shall inform Fiumicino TWR at start-up.
- d) During independent parallel approaches for RWY 16L/R non P-RNAV aircraft planning via RAVAL and ERNEN will be initially cleared via SOSAK departure (RDL/QDR 217 OST VOR/NDB) and then rerouted, according to traffic situation, through radar vectoring bound to the planned exit point.
- e) Pilots shall adopt a minimum climb gradient in accordance with ICAO-Annex 6 provisions for a safe obstacles overflying. Such climb gradient shall be maintained in any foreseeable circumstance.

RWY 16R**XIBRI 5B**

After take-off maintain RWY heading up to 2 NM OST DME (MCA 620ft) then turn right (IAS MAX 220 kt) on RDL/QDR 188 OST VOR/NDB bound to XIBRI

SOSAK 5B

After take-off maintain RWY heading up to 2 NM OST DME (MCA 620ft) then turn right (IAS MAX 220 kt) on RDL/QDR 217 OST VOR/NDB bound to SOSAK.

RAVAL 5B (ATC discretion)

After take-off maintain RWY heading up to 2 NM OST DME (MCA 620FT) then turn right (IAS MAX 220 kt) on n RDL/QDR 268 OST VOR/NDB bound to RAVAL

RAVAL 5K

Dopo il decollo procedere via RF601 - RF603 - RAVAL.

RAVAL 5K

After take-off proceed via RF601 - RF603 - RAVAL

MCA: RF601 620FT; RF603 2500FT; RAVAL 4000FT

| Path Terminator | Waypoint Name | Fly Over | Track °Mag | Turn Direction | MCA/MCL | Speed Limit (IAS) | Recommended Navaid | Bearing/Range to Navaid | Navigation Performance |
|-----------------|---------------|----------|------------|----------------|---------|-------------------|--------------------|-------------------------|------------------------|
| CA | - | - | 161° | - | 410 | - | - | - | P-RNAV |
| DF | RF601 | Y | - | - | 620 | 220 | - | - | P-RNAV |
| DF | RF603 | Y | - | - | 2500 | - | - | - | P-RNAV |
| TF | RAVAL | - | 284° | - | 4000 | | - | - | P-RNAV |

ERNEN 5B (a discrezione ATC)

Dopo il decollo mantenere prua pista fino a 2NM OST DME (MCA 620ft) quindi virare a destra (IAS MAX 220 kt) su RDL/QDR 289 OST VOR/NDB per il punto ERNEN

ERNEN 5B (ATC discretion)

After take-off maintain RWY heading up to 2 NM OST DME (MCA 620ft) then turn right (IAS MAX 220 kt) on RDL/QDR 289 OST VOR/NDB bound to ERNEN

MCA: RF601 620FT; ERNEN 4000FT

ERNEN 5K

Dopo il decollo procedere via RF601 – RF603 – ERNEN.

ERNEN 5K

After take-off proceed via RF601 – RF603 – ERNEN

MCA: RF601 620FT; RF603 2500FT; ERNEN 4000FT

| Path Terminator | Waypoint Name | Fly Over | Track °Mag | Turn Direction | MCA/MCL | Speed Limit (IAS) | Recommended Navaid | Bearing/Range to Navaid | Navigation Performance |
|-----------------|---------------|----------|------------|----------------|---------|-------------------|--------------------|-------------------------|------------------------|
| CA | - | - | 161° | - | 410 | - | - | - | P-RNAV |
| DF | RF601 | Y | - | - | 620 | 220 | - | - | P-RNAV |
| DF | RF603 | Y | - | - | 2500 | - | - | - | P-RNAV |
| TF | ERNEN | - | 315° | - | 4000 | | - | - | P-RNAV |

RWY 16L**XIBRI 5C**

Dopo il decollo mantenere prua pista fino ad attraversare RDL/QDR 099 OST VOR/NDB (MCA 510 ft) quindi virare a destra (IAS MAX 210 kt) per RDL/QDR 188 OST VOR/NDB per il punto XIBRI

RWY 16L**XIBRI 5C**

After take-off maintain RWY heading until crossing RDL/QDR 099 OST VOR/NDB (MCA 510 ft) then turn right (IAS MAX 210 kt) to join RDL/QDR 188 OST VOR/NDB bound to XIBRI

MCA: RF602 510FT; XIBRI 3000FT

| Path Terminator | Waypoint Name | Fly Over | Track °Mag | Turn Direction | Altitude Constraint | Speed Limit (IAS) | Recommended Navaid | Bearing/Range to Navaid | Navigation Performance |
|-----------------|---------------|----------|------------|----------------|---------------------|-------------------|--------------------|-------------------------|------------------------|
| CA | - | - | 161° | - | 405 | - | - | - | Conventional/P-RNAV |
| DF | RF602 | Y | - | - | 510 | 210 | - | - | Conventional/P-RNAV |
| CF | XIBRI | - | 188° | - | 3000 | - | OST VOR/NDB/DME | RDL/QDR 188° - D15 | Conventional/P-RNAV |

SOSAK 5C

Dopo il decollo mantenere prua pista fino ad attraversare RDL/QDR 099 OST VOR/NDB (MCA 510 ft) quindi virare a destra (IAS MAX 210 kt) per RDL/QDR 217 OST VOR/NDB per il punto SOSAK.

SOSAK 5C

After take-off maintain RWY heading until crossing RDL/QDR 099 OST VOR/NDB (MCA 510 ft) then turn right (IAS MAX 210 kt) to join RDL/QDR 217 OST VOR/NDB bound to SOSAK.

MCA: RF602 510FT; SOSAK 3000FT

| Path Terminator | Waypoint Name | Fly Over | Track °Mag | Turn Direction | Altitude Constraint | Speed Limit (IAS) | Recommended Navaid | Bearing/Range to Navaid | Navigation Performance |
|-----------------|---------------|----------|------------|----------------|---------------------|-------------------|--------------------|-------------------------|------------------------|
| CA | - | - | 161° | - | 405 | - | - | - | Conventional/P-RNAV |
| DF | RF602 | Y | - | - | 510 | 210 | - | - | Conventional/P-RNAV |
| DF | RF603 | Y | - | - | - | - | - | - | Conventional/P-RNAV |
| CF | SOSAK | - | 217° | - | 3000 | - | OST VOR/NDB/DME | RDL/QDR 217° - D14 | Conventional/P-RNAV |

RAVAL 5C (a discrezione ATC)

Dopo il decollo mantenere prua pista fino ad attraversare RDL/QDR 099 OST VOR/NDB (MCA 500ft) quindi virare a destra (IAS MAX 210 kt) su RDL/QDR 268 OST VOR/NDB per il punto RAVAL

RAVAL 5C (ATC discretion)

After take-off maintain RWY heading until crossing RDL/QDR 099 OST VOR/NDB (MCA 500ft) then turn right (IAS MAX 210 kt) on RDL/QDR 268 OST VOR/NDB bound to RAVAL.

MCA: RAVAL, 4000FT

RAVAL 5J

Dopo il decollo procedere via RF602 - RF603 - RAVAL.

RAVAL 5J

After take-off proceed via RF602 - RF603 - RAVAL

MCA: RF602 510FT; RF603 2500 FT; RAVAL 4000FT

| Path Terminator | Waypoint Name | Fly Over | Track °Mag | Turn Direction | MCA/MCL | Speed Limit (IAS) | Recommended Navaid | Bearing/Range to Navaid | Navigation Performance |
|-----------------|---------------|----------|------------|----------------|---------|-------------------|--------------------|-------------------------|------------------------|
| CA | - | - | 161° | - | 405 | - | - | - | P-RNAV |
| DF | RF602 | Y | - | - | 510 | 210 | - | - | P-RNAV |
| DF | RF603 | Y | - | - | 2500 | - | - | - | P-RNAV |
| TF | RAVAL | - | 284° | - | 4000 | - | - | - | P-RNAV |

ERNEN 5C (a discrezione ATC)

Dopo il decollo mantenere prua pista fino ad attraversare RDL/QDR 099 OST VOR/NDB (MCA 510 ft) quindi virare a destra (IAS MAX 210 kt) su RDL/QDR 289 OST VOR/NDB per il punto ERNEN

ERNEN 5C (ATC discretion)

After take-off maintain RWY heading until crossing RDL/QDR 099 OST VOR/NDB (MCA 510 ft) then turn right (IAS MAX 210 kt) on RDL/QDR 289 OST VOR/NDB bound to ERNEN.

MCA: RF602 510FT; ERNEN 4000FT

ERNEN 5J

Dopo il decollo procedere via RF602 – RF603 – - ERNEN.

ERNEN 5J

After take-off proceed via RF602 – RF603 – ERNEN

MCA: RF602 510FT; RF603 2500 FT; ERNEN 4000FT

| Path Terminator | Waypoint Name | Fly Over | Track °Mag | Turn Direction | MCA/MCL | Speed Limit (IAS) | Recommended Navaid | Bearing/Range to Navaid | Navigation Performance |
|-----------------|---------------|----------|------------|----------------|---------|-------------------|--------------------|-------------------------|------------------------|
| CA | - | - | 161° | - | 405 | - | - | - | P-RNAV |
| DF | RF602 | Y | - | - | 510 | 210 | - | - | P-RNAV |
| DF | RF603 | Y | - | - | 2500 | - | - | - | P-RNAV |
| TF | ERNEN | - | 315° | - | 4000 | | - | - | P-RNAV |

Waypoints Table formatted according ARINC 424 standards

| Waypoint | Latitude | Longitude |
|----------|-----------|------------|
| RF601 | N41461568 | E012144200 |
| RF602 | N41475076 | E012165452 |
| RF603 | N41421924 | E012111430 |