

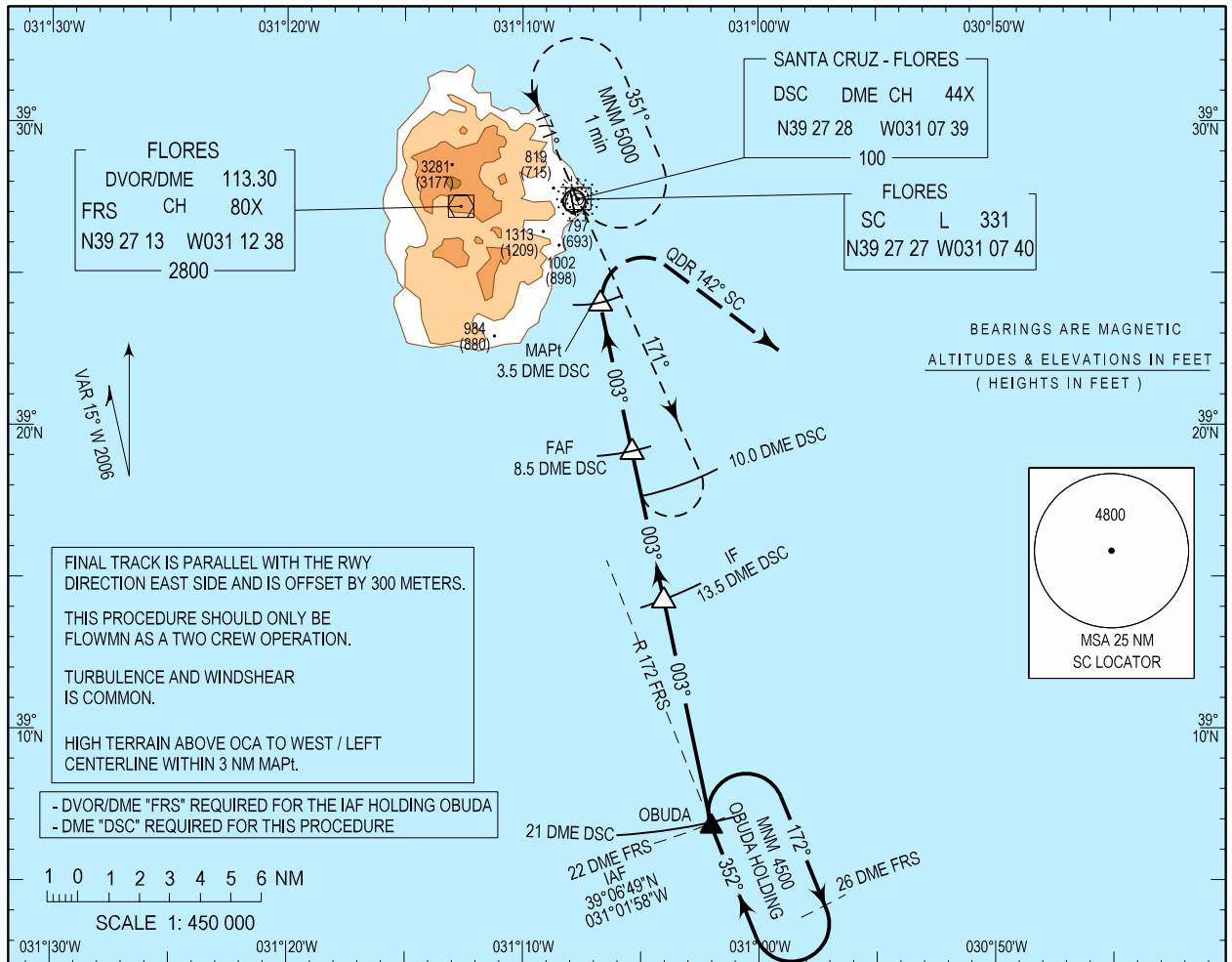
**INSTRUMENT  
APPROACH  
CHART - ICAO**

AD ELEV 108 ft  
HEIGHTS RELATED  
THR RWY 36 -ELEV 104 ft

APP 118.800  
TWR 118.800

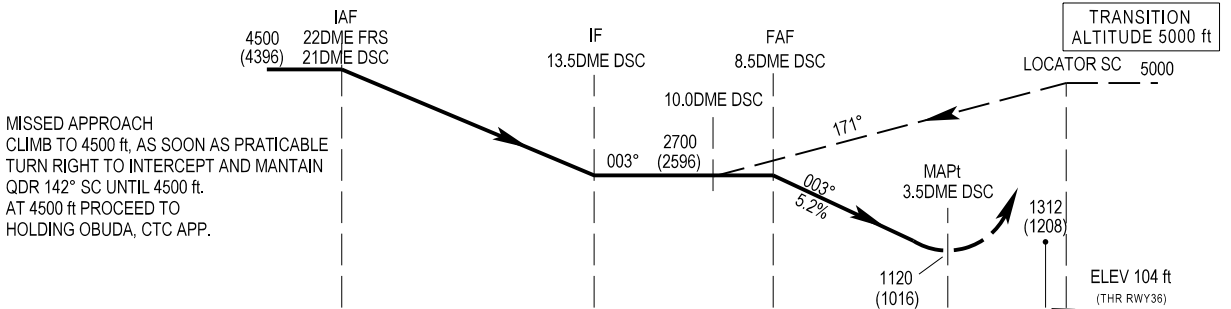
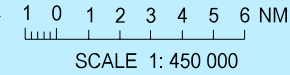
**FLORES / LPFL**

LOCATOR SC-a  
RWY36  
CAT A-B



FINAL TRACK IS PARALLEL WITH THE RWY DIRECTION EAST SIDE AND IS OFFSET BY 300 METERS.  
THIS PROCEDURE SHOULD ONLY BE FLOWN AS A TWO CREW OPERATION.  
TURBULENCE AND WINDSHEAR IS COMMON.  
HIGH TERRAIN ABOVE OCA TO WEST / LEFT CENTERLINE WITHIN 3 NM MAPt.

- DVOR/DME "FRS" REQUIRED FOR THE IAF HOLDING OBUDA
- DME "DSC" REQUIRED FOR THIS PROCEDURE



CATEGORY		A	B
OCA(H)			
CIRCLING	WEST RWY36	NOT AUTHORIZED	
	EAST RWY36	1120(1016)	
VISIBILITY		6000 m	

DME - DSC	NM	8.5	7.5	6.5	5.5		
FAF to MAPt (5.0NM)	Altitude (height)	2700 (2596)	2385 (2281)	2070 (1966)	1755 (1651)		
SPEED		kt	80	100	120	140	160
FAF TO MAPt (5.0NM)		min	3:86	3:08	2:57	2:20	1:98
Rate of descend (5.2%)		ft / min	420	525	630	735	840

New procedure

THIS PAGE INTENTIONALLY LEFT BLANK