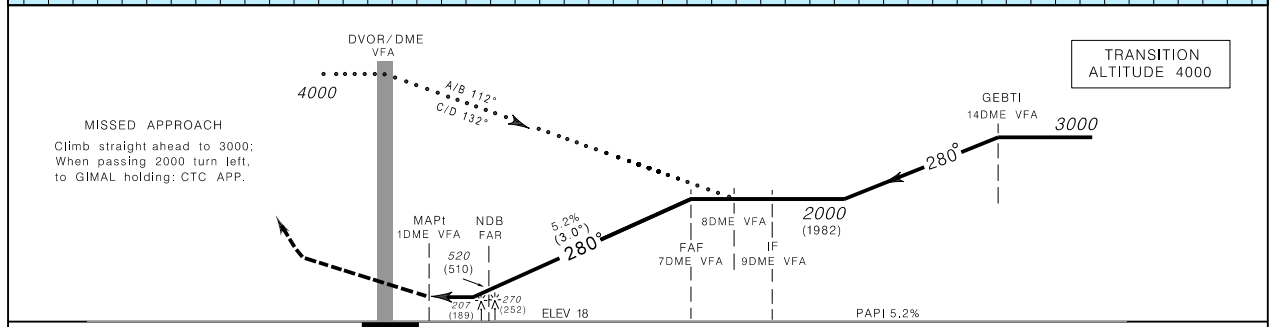
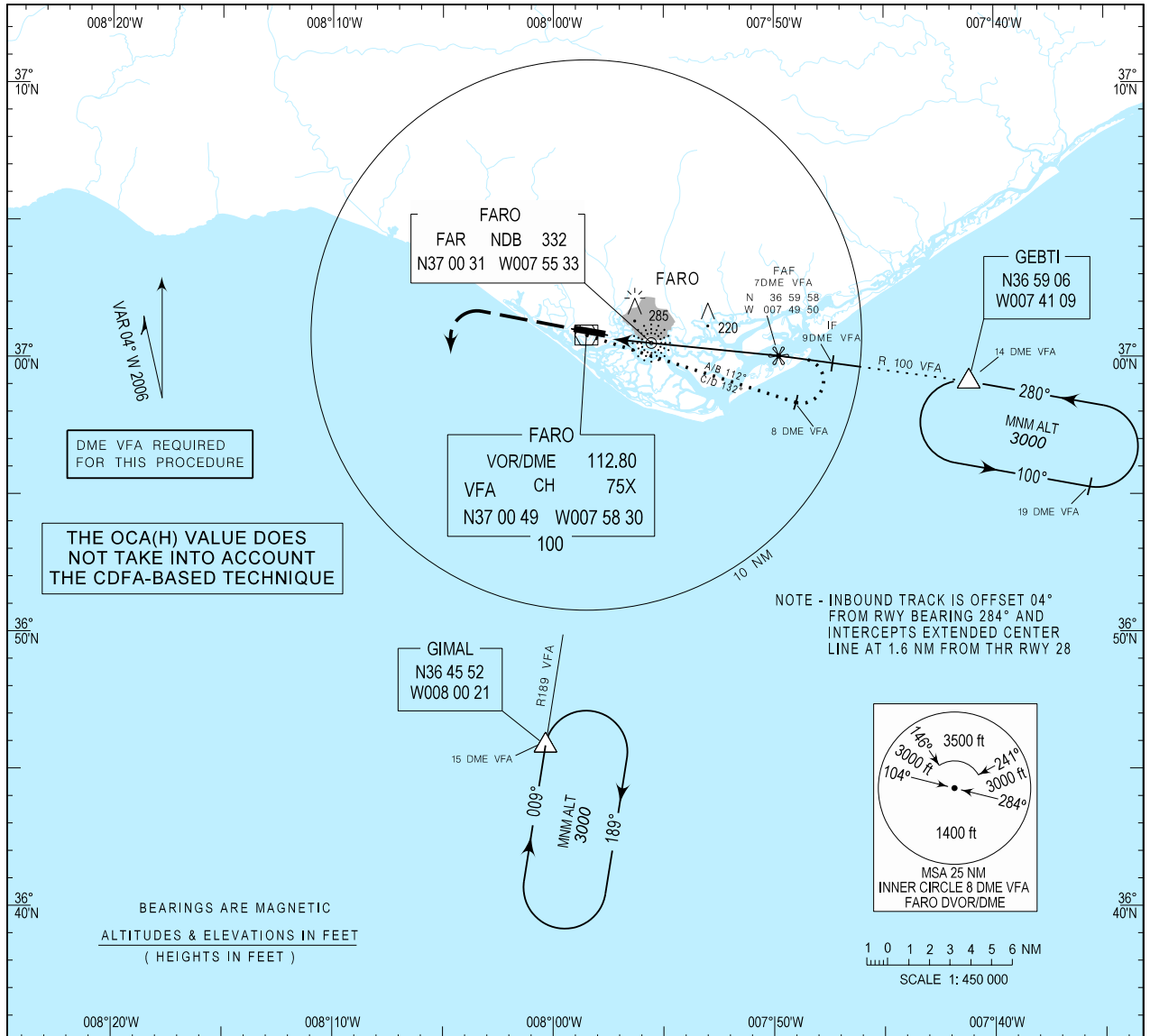


INSTRUMENT
APPROACH
CHART - ICAO

AD ELEV 24 ft
HEIGHTS RELATED
THR RWY 28 - ELEV 18 ft

APP 119.400
TWR 120.750

FARO / LPFR
DVOR-Z
RWY 28
CAT A-B-C-D



MISSED APPROACH
Climb straight ahead to 3000;
When passing 2000 turn left,
to GIMAL holding: CTC APP.

CATEGORY \ OCA (H)	CATEGORY			
	A	B	C	D
STRAIGHT-IN	460(450)	460(450)	460(450)	460(450)
CIRCLING	NOT AUTHORIZED			
	NORTH RWY10/28			
	460	520	620	720

DME-VFA	6	5	4	3
ALTITUDE (HEIGHT)	1685(1665)	1370(1350)	1055(1035)	740(720)
DIST THR	5.25	4.45	3.25	2.25

MSA CHANGED

THIS PAGE INTENTIONALLY LEFT BLANK