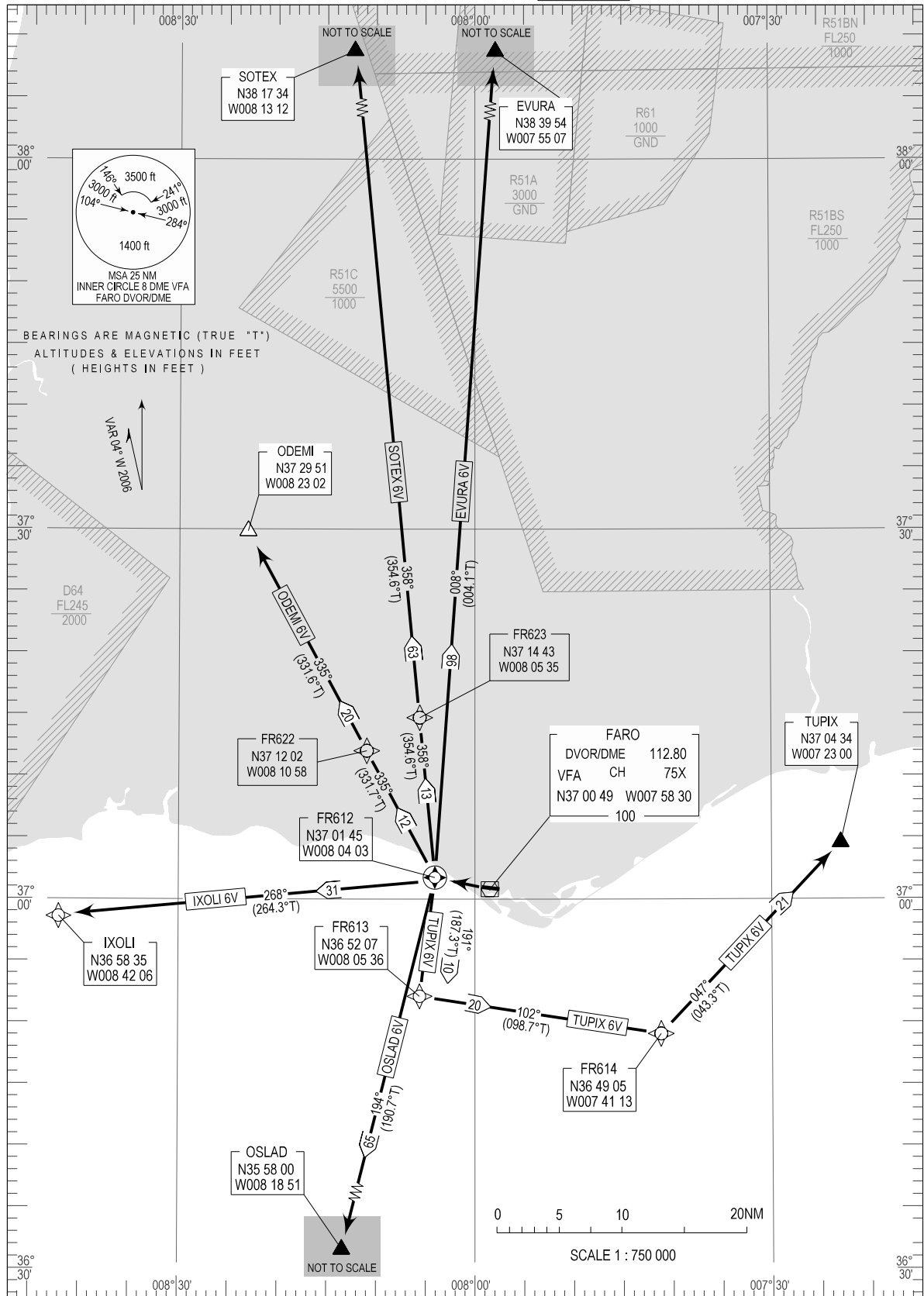


STANDARD DEPARTURE CHART -
INSTRUMENT (SID) - ICAO

FARO (LPFR)
RNAV Rwy 28

TRANSITION ALTITUDE
4000
TWR 120.750
APP 119.400
ACC 125.550

EVURA 6V, IXOLI 6V, ODEMI 6V
OSLAD 6V, SOTEX 6V, TUPIX 6V



THIS PAGE INTENTIONALLY LEFT BLANK