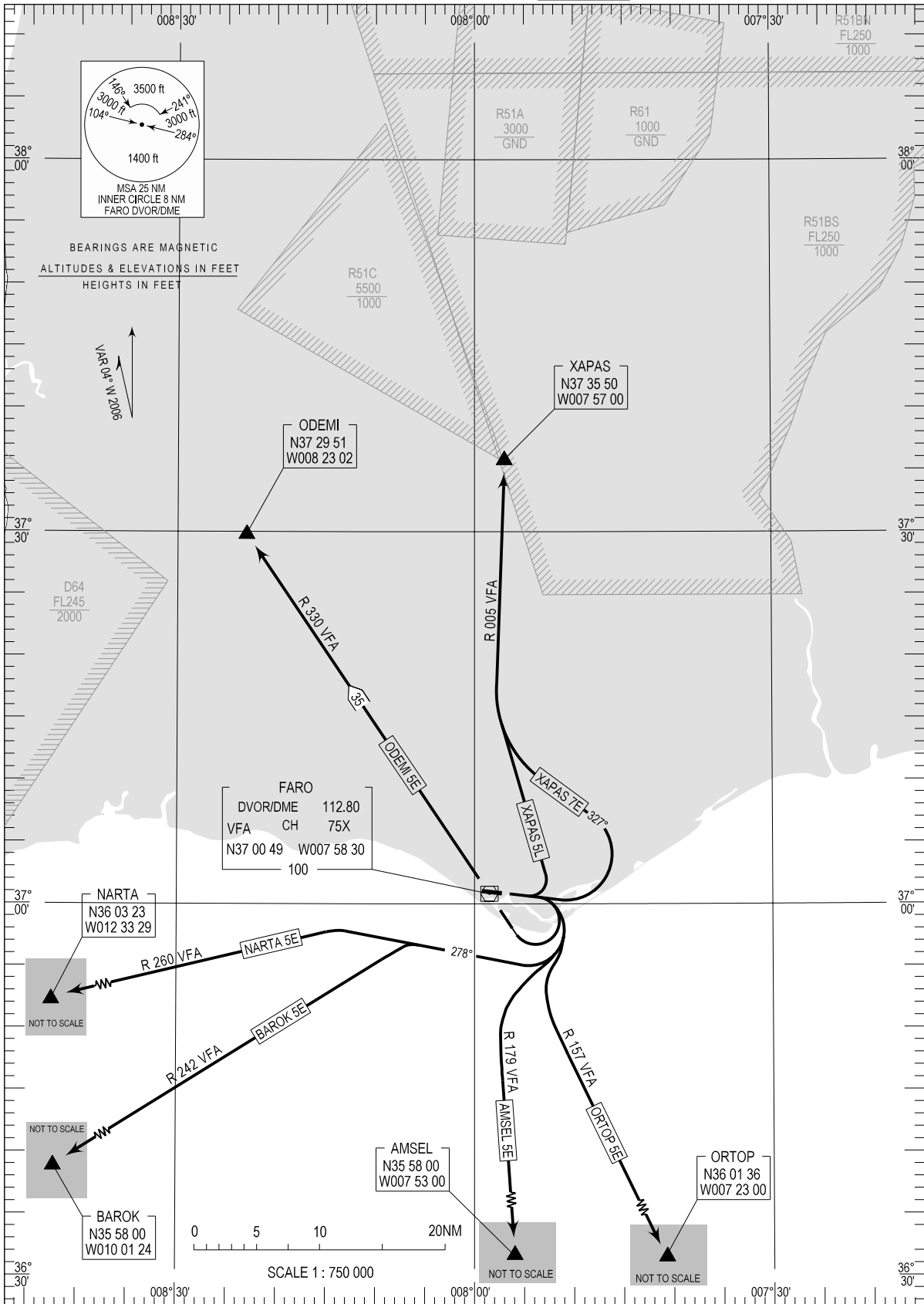


# STANDARD DEPARTURE CHART - INSTRUMENT (SID) - ICAO

## FARO RWY 10

TRANSITION ALTITUDE  
4000  
TWR 120.750  
APP 119.400  
ACC 125.550

AMSEL5E, BAROK5E, NARTA5E  
ODEM5E, ORTOP5E, XAPAS7E, XAPAS5L



THIS PAGE INTENTIONALLY LEFT BLANK