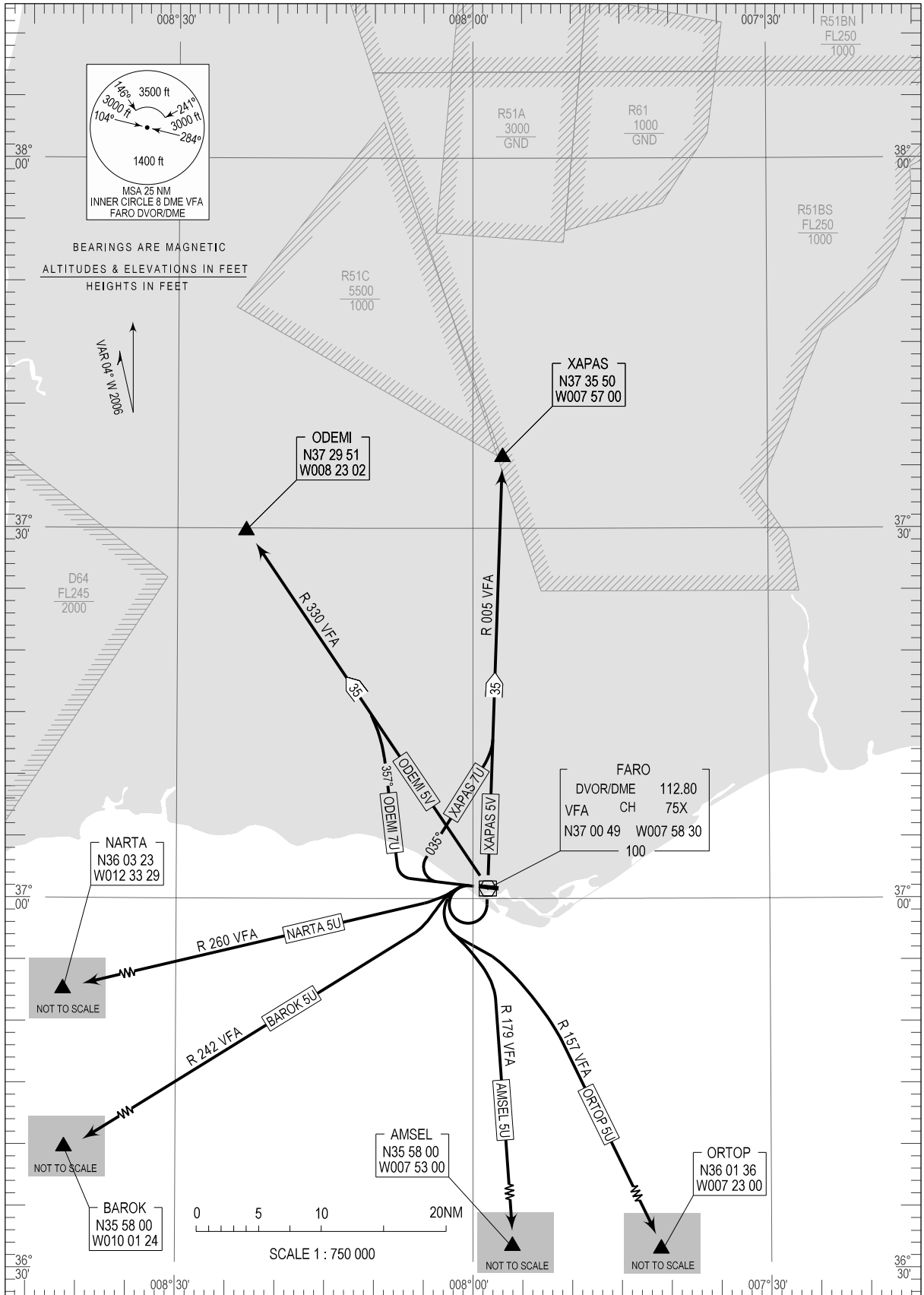


STANDARD DEPARTURE CHART - INSTRUMENT (SID) - ICAO

FARO RWY 28

TRANSITION ALTITUDE	TWR 120.750
4000	APP 119.400
	ACC 125.550

AMSEL5U, BAROK5U, NARTA5U, ODEMI7U
ODEMI5V, ORTOP5U, XAPAS7U, XAPAS5V



MSA CHANGED

THIS PAGE INTENTIONALLY LEFT BLANK