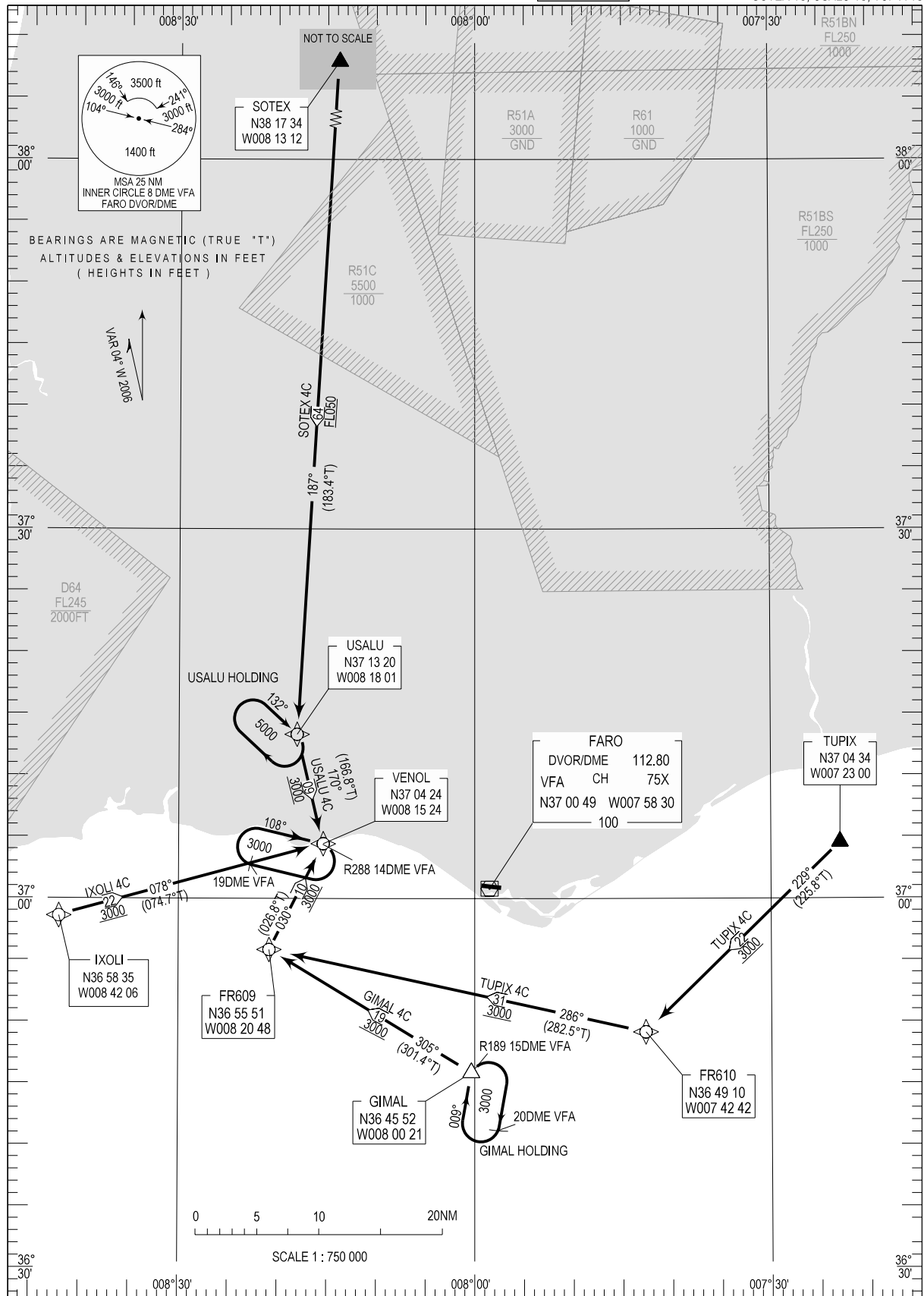


# STANDARD ARRIVAL CHART - INSTRUMENT (STAR) - ICAO

# FARO (LPFR) RNAV RWY10

TRANSITION ALTITUDE 4000	TWR 120.750 APP 119.400 ACC 125.550
-----------------------------	---

GIMAL 4C, IXOLI 4C  
SOTEX 4C, USALU 4C, TUPIX 4C



THIS PAGE INTENTIONALLY LEFT BLANK