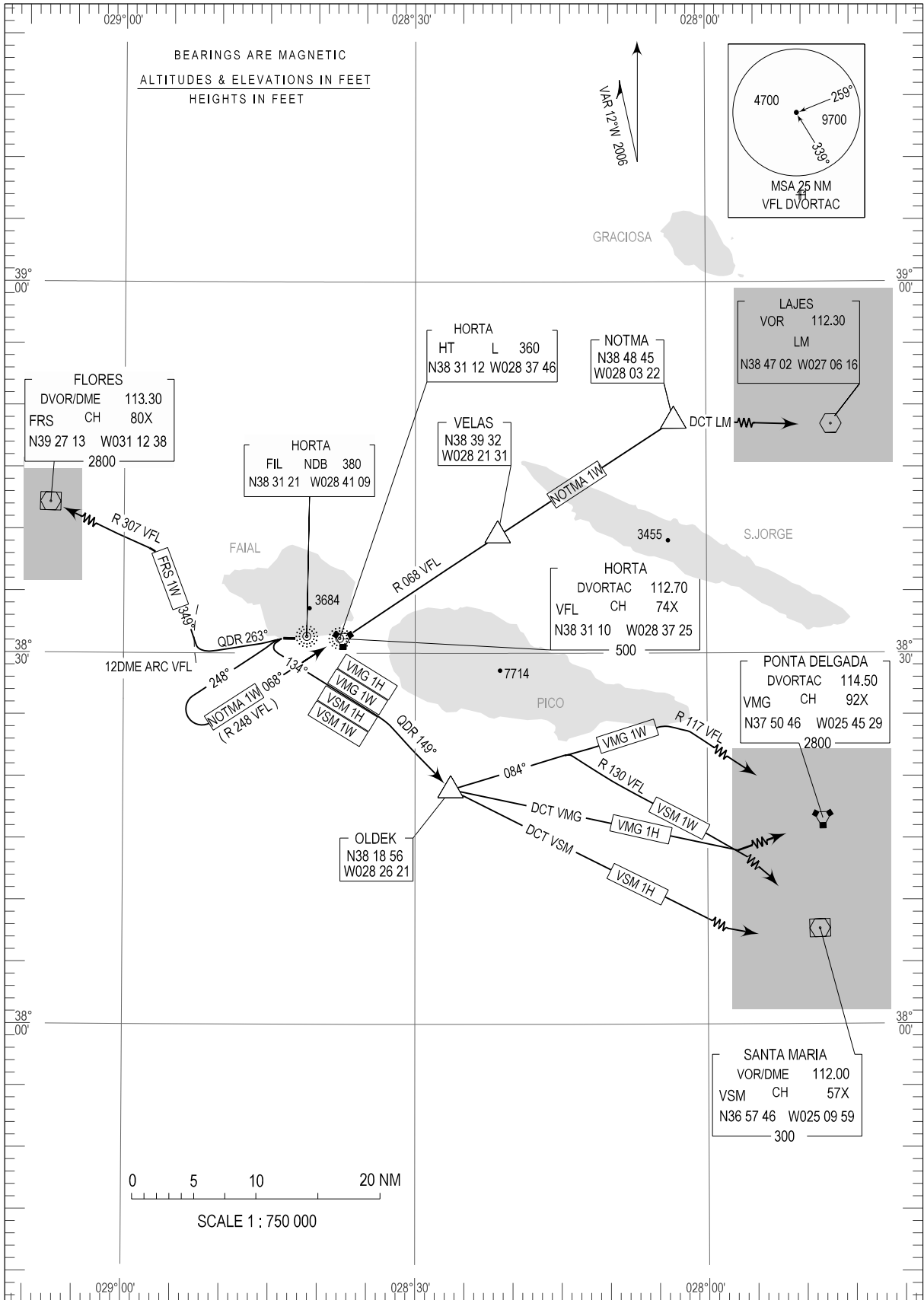


STANDARD DEPARTURE CHART -
INSTRUMENT (SID) - ICAO

TRANSITION ALTITUDE 5000
TWR 118.000
APP 120.600

HORTA (LPHR)
RWY 28
FRS 1W,VSM 1W,VSM 1H
VMG 1W,VMG 1H,NOTMA 1W



THIS PAGE INTENTIONALLY LEFT BLANK