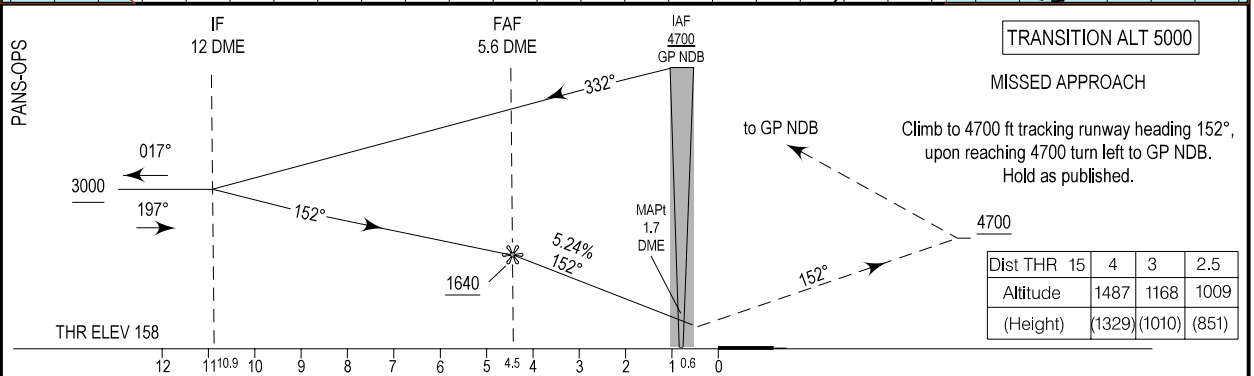
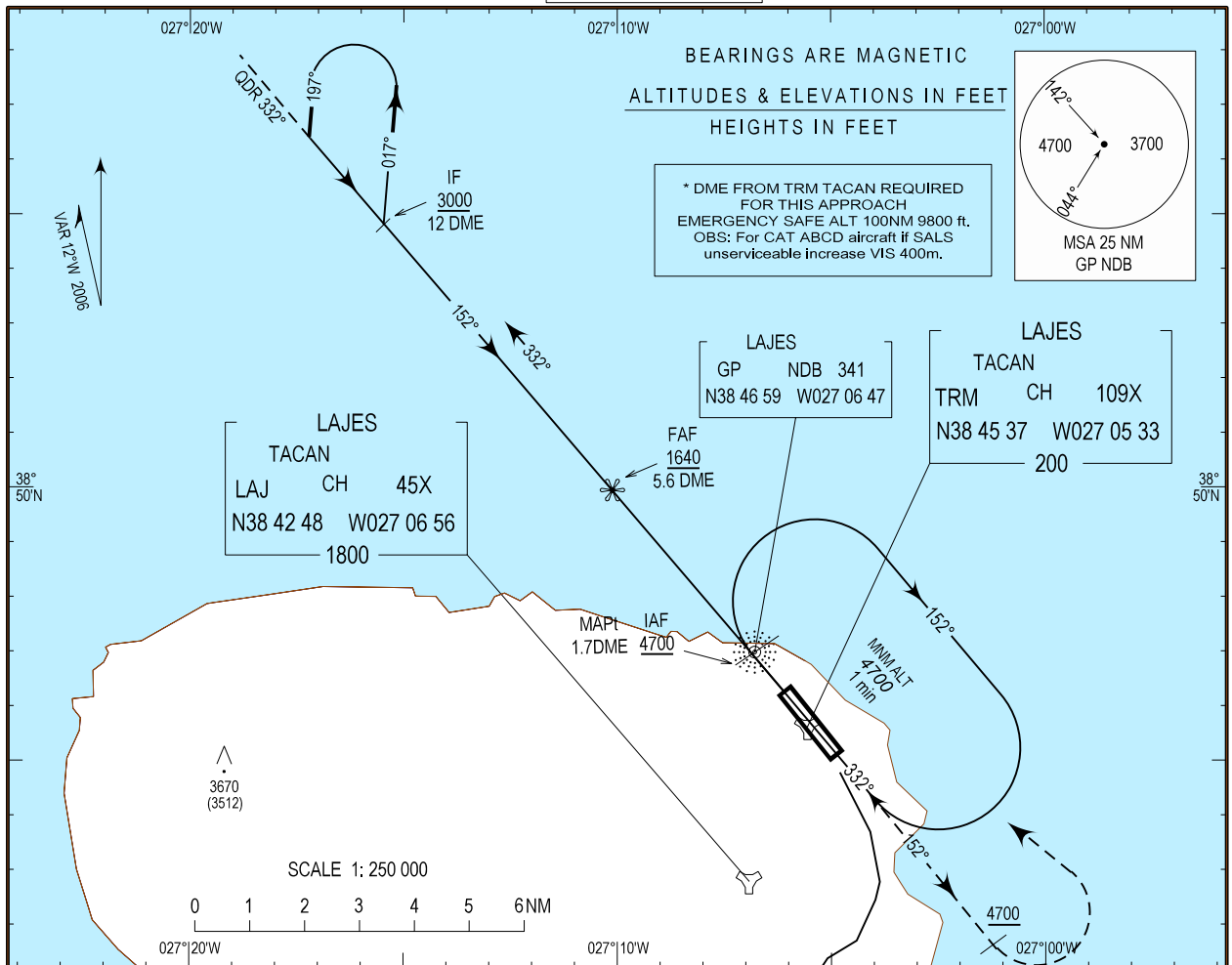


**INSTRUMENT
APPROACH
CHART - ICAO**

AD ELEV 180ft
HEIGHTS RELATED
THR RWY 15 -ELEV 158ft

ATIS 120.300 / 234.800
APP 135.000 / 362.300
TWR 122.100 / 257.800
SMC 121.900 / 233.975

LAJES (LPLA)
NDB
RWY15
CAT A/B/C/D



CATEGORY	A	B	C	D
NDB RWY15	870 712 (800 - 1.2)	870 712 (800 - 2.8)	870 712 (800 - 3.2)	870 712 (800 - 3.2)
CIRCLING *	900 720 (800 - 1.9)	900 720 (800 - 2.8)	900 720 (800 - 3.7)	900 720 (800 - 4.6)

* CIRCLING NOT AUTHORIZED WEST OF RWY 15/33

Ground Speed -Kt	90	100	120	130	140	150
FAF-MAPt (3.9NM) (min:sec)	2:37	2:21	1:58	1:49	1:41	1:34
Rate of Descent (ft/min) FAF - THR15	478	531	638	691	744	797

Emergency Safe Altitude changed

THIS PAGE INTENTIONALLY LEFT BLANK