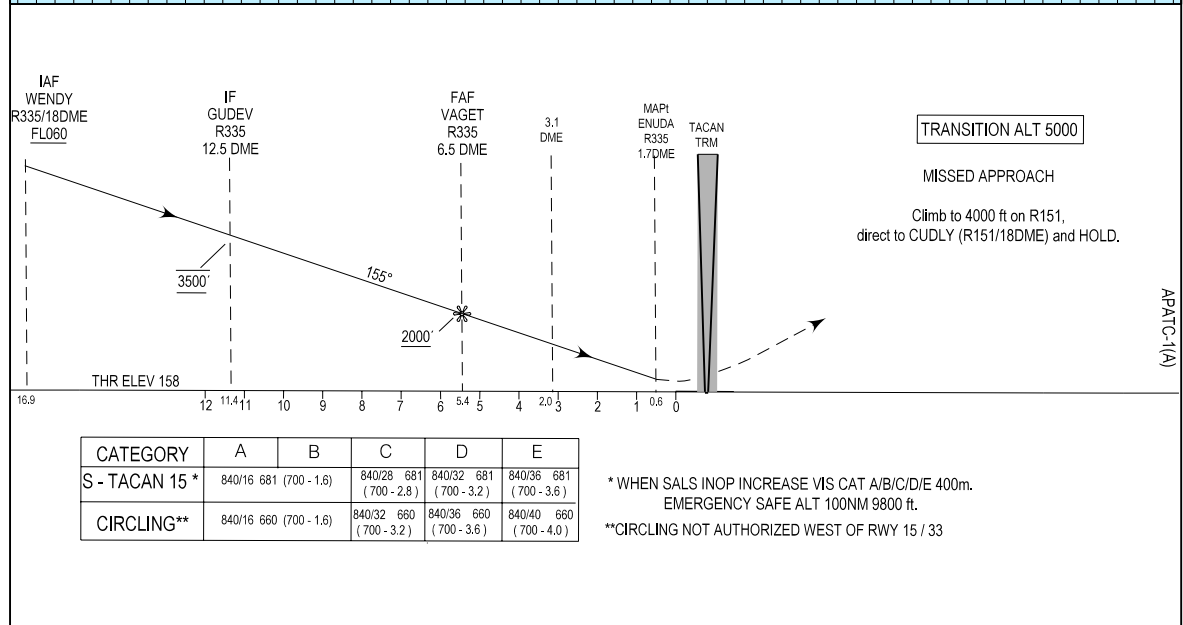
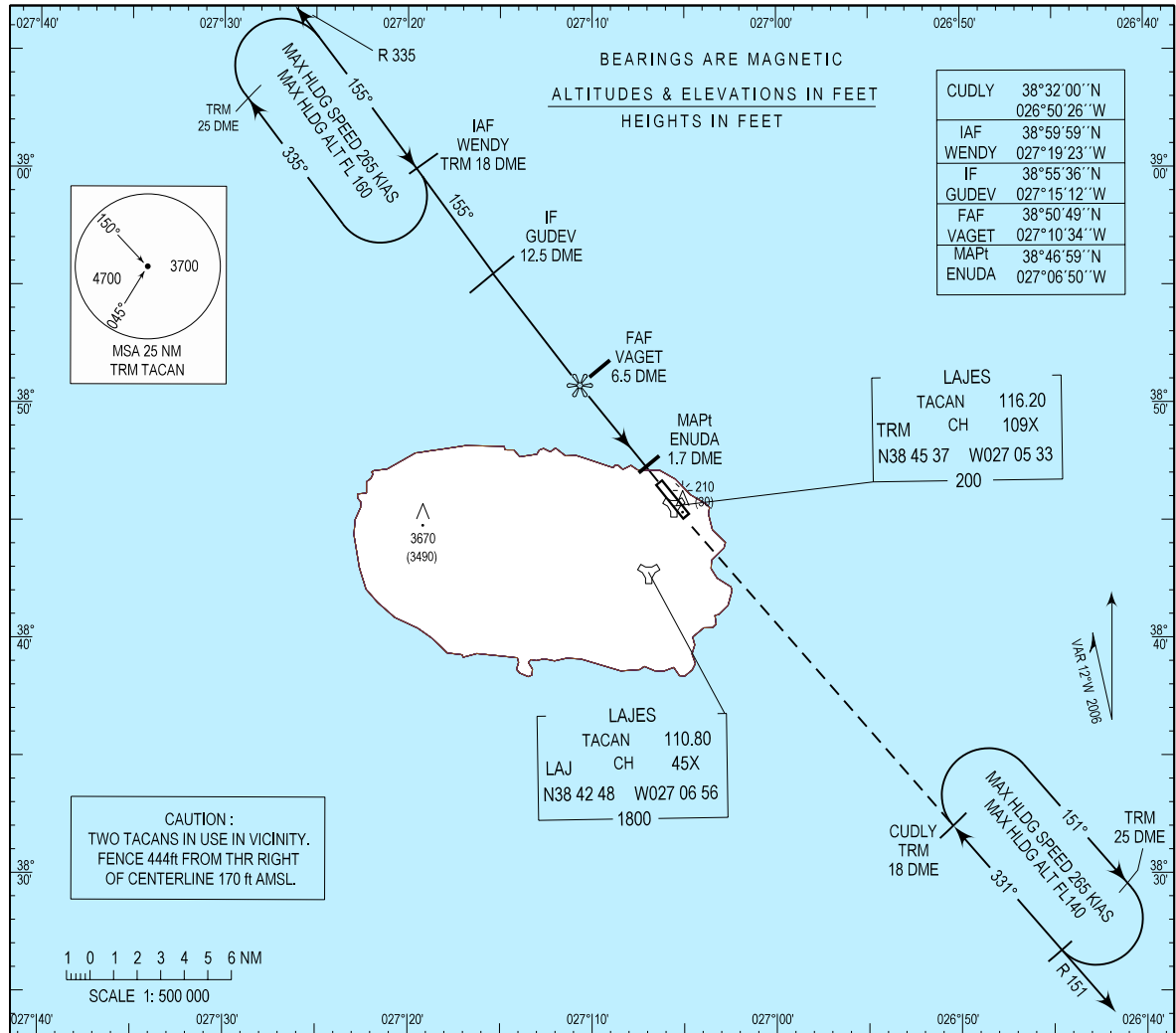


INSTRUMENT
APPROACH
CHART - ICAO

AERODROME ELEV. 180ft
HEIGHTS RELATED TO
THR RWY 15 - ELEV 158ft

ATIS 120.300 / 234.800
APP 135.000 / 362.300
TWR 122.100 / 257.800
SMC 121.900 / 233.975

LAJES (LPLA)
TACAN
RWY 15
CAT A/B/C/D/E



CATEGORY	A	B	C	D	E
S - TACAN 15*	840/16 681 (700 - 1.6)	840/28 681 (700 - 2.8)	840/32 681 (700 - 3.2)	840/36 681 (700 - 3.6)	840/40 681 (700 - 4.0)
CIRCLING**	840/16 660 (700 - 1.6)	840/32 660 (700 - 3.2)	840/36 660 (700 - 3.6)	840/40 660 (700 - 4.0)	

* WHEN SALS INOP INCREASE VIS CAT A/B/C/D/E 400m.
EMERGENCY SAFE ALT 100NM 9800 ft.
**CIRCLING NOT AUTHORIZED WEST OF RWY 15 / 33

Emergency Safe Altitude changed

THIS PAGE INTENTIONALLY LEFT BLANK