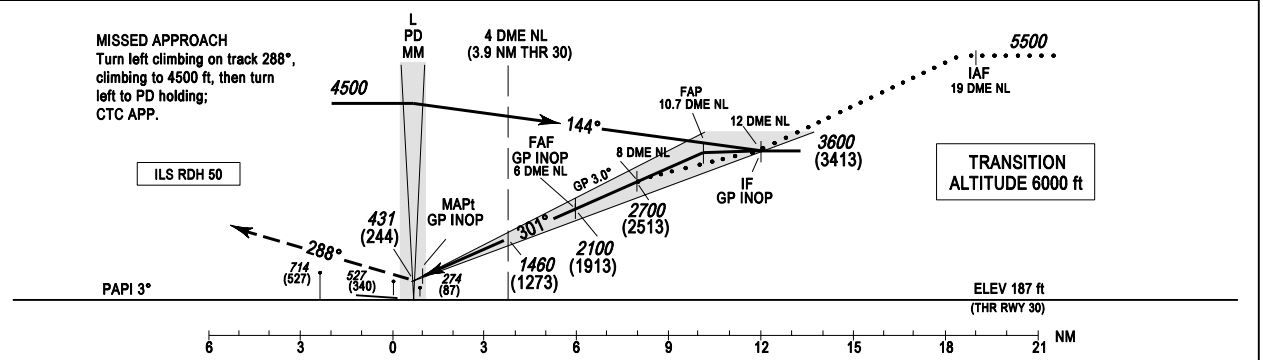
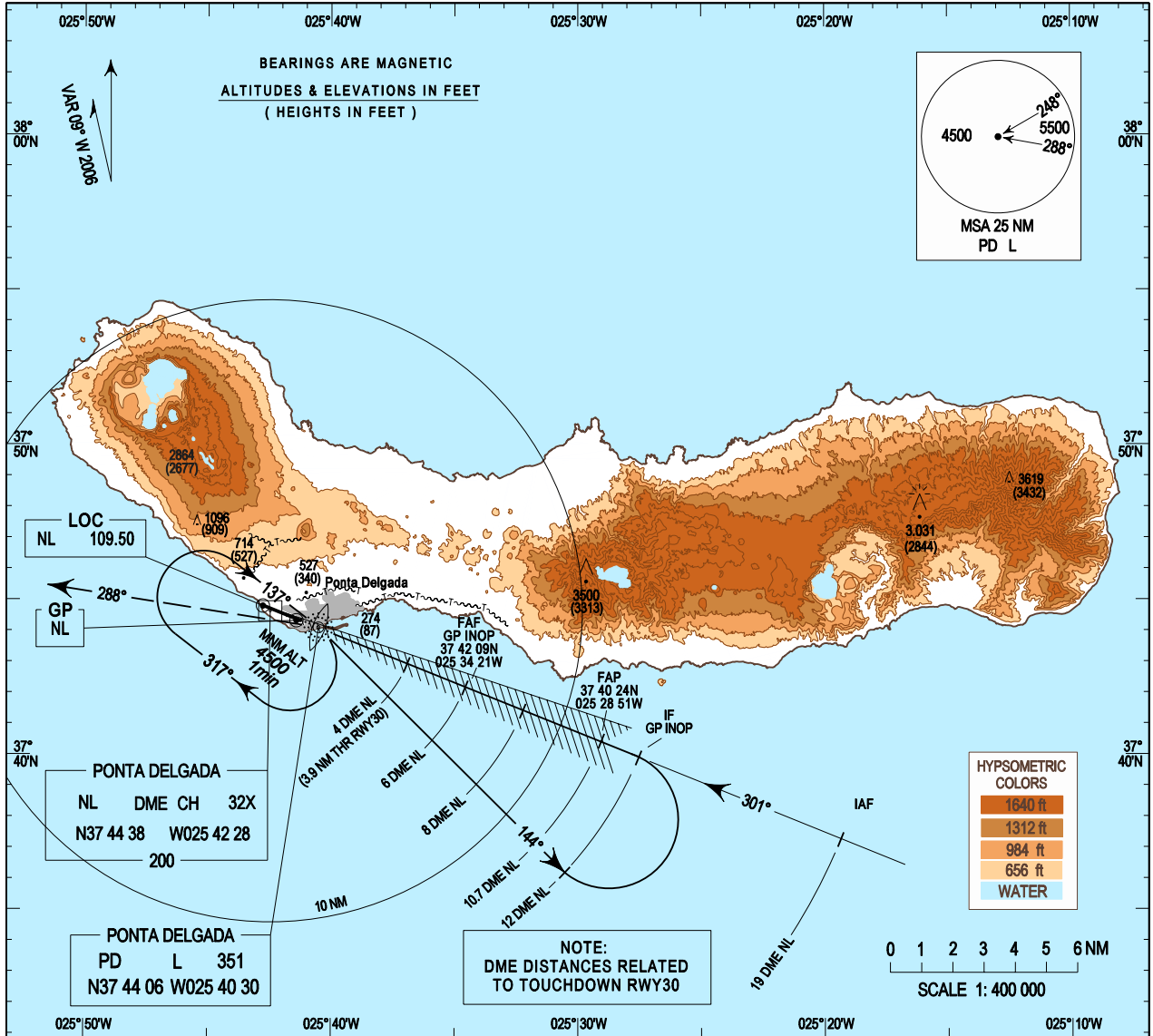


**INSTRUMENT  
APPROACH  
CHART - ICAO**

**AD ELEV 259 ft  
HEIGHTS RELATED  
THR RWY 30 - ELEV 187 ft**

**APP 119.400  
TWR 118.300**

**PONTA DELGADA/LPPD**  
ILS / DME RWY30  
CAT C - D



OCA (H)	CATEGORY	C	D
	ILS		
ILS	CAT I	428(241)	438(251)
	GP INOP	530 (350)	
CIRCLING	NORTH RWY 30	NOT AUTHORIZED	
	SOUTH RWY 30	850	950

GP INOP								
DME-NL	8	7	6	5	4	3	2	
ALTITUDE HEIGHT	2700(2513)	2400(2213)	2100(1913)	1780(1593)	1460(1273)	1145(958)	825(638)	
Speed	kt	100	120	140	160	180	200	220
Rate of descent (5.2%)	ft/min	525	630	735	840	945	1050	1160

New chart format

THIS PAGE INTENTIONALLY LEFT BLANK