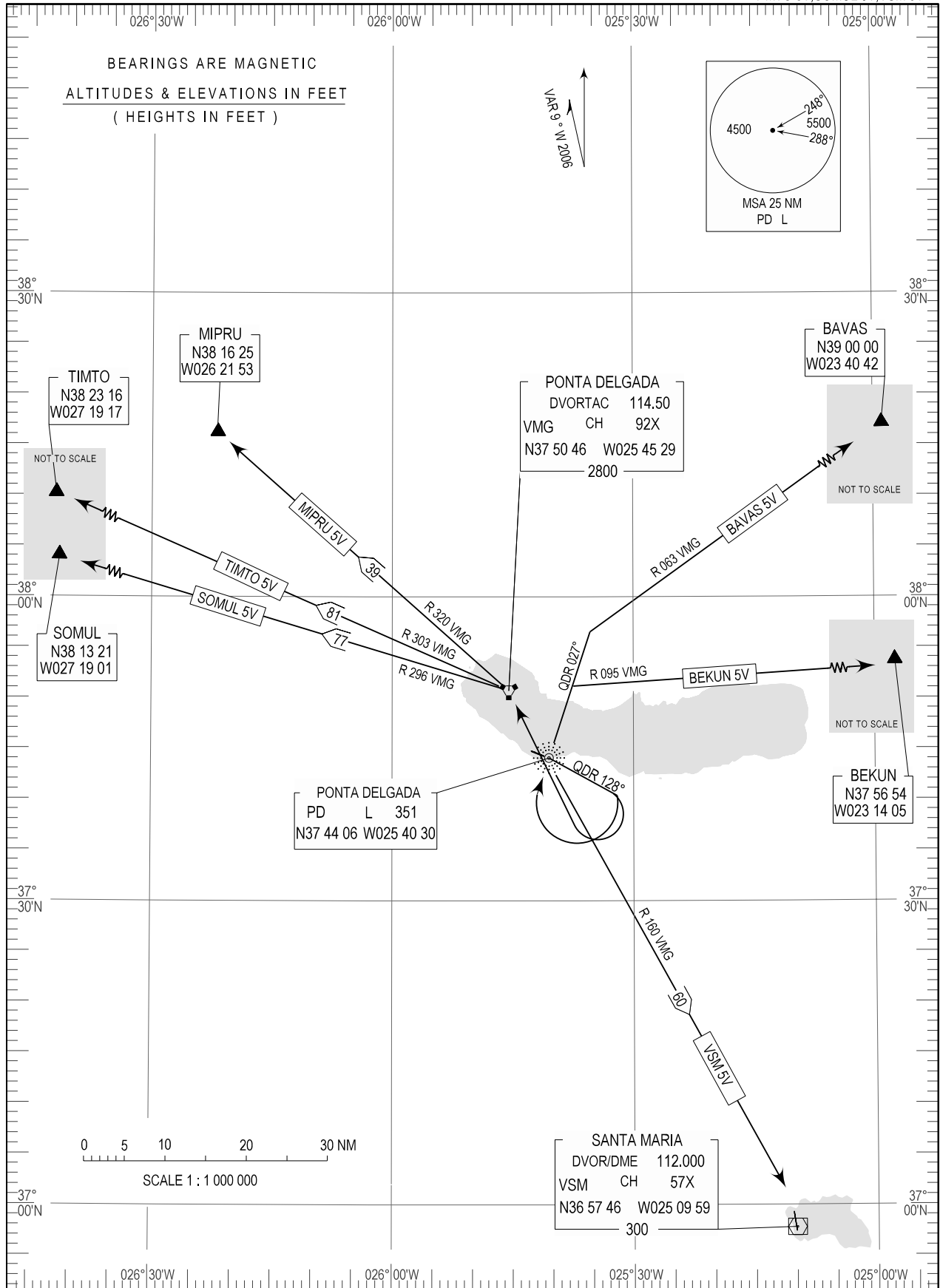


STANDARD DEPARTURE CHART -
INSTRUMENT (SID) - ICAO

TRANSITION ALTITUDE
6000

APP 119.400
TWR 118.300

PONTA DELGADA (LPPD)
RWY 12
BAVAS 5V, BEKUN 5V, MIPRU 5V
TIMTO 5V, SOMUL 5V, VSM 5V



VOR/DME VSM Freq changed

THIS PAGE INTENTIONALLY LEFT BLANK