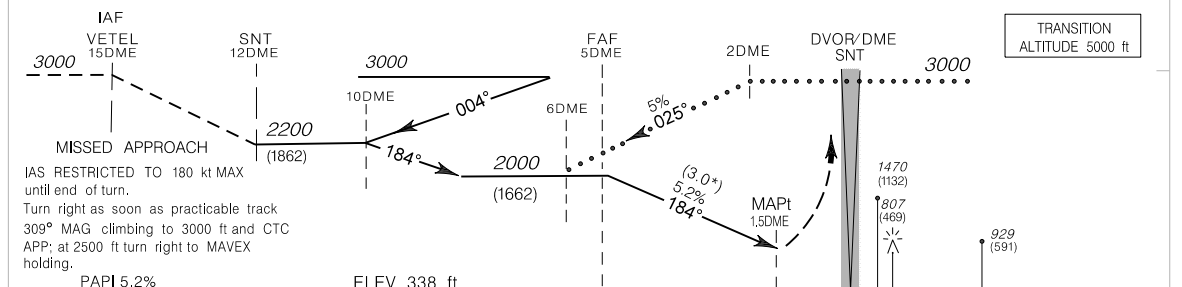
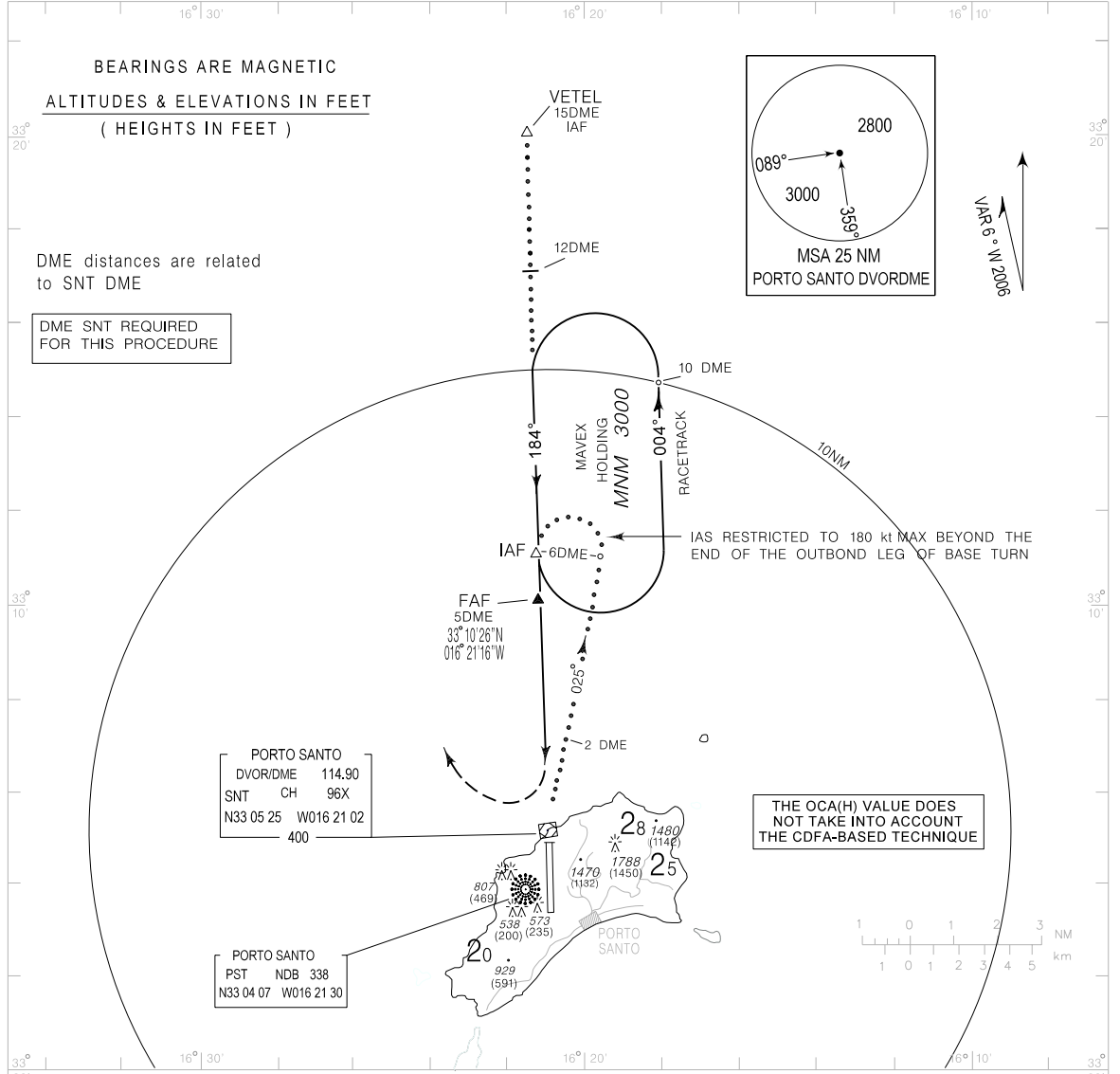


INSTRUMENT APPROACH CHART-ICAO
ELEV 338 ft
HEIGHTS RELATED TO THR RWY 18 ELEV 338 ft
MADEIRA APP 119.600
PORTO SANTO TWR 120.050
PORTO SANTO (LPPS)
DVOR RWY 18
CAT C-D



CATEGORY	C	D
	OCA (H)	
STRAIGHT-IN	890 (560)	
CIRCLING	EAST RWY 1836	NOT AUTHORIZED
	WEST RWY 1836	1330

DME/SNT	4	3	2	1
ALTITUDE	1695	1370	1055	-

Speed	kt	80	100	120	140	160	180	200
Rate of descent (5.2%)	ft/min	420	525	630	735	840	945	1050

Ref RWY 18 corrected

THIS PAGE INTENTIONALLY LEFT BLANK