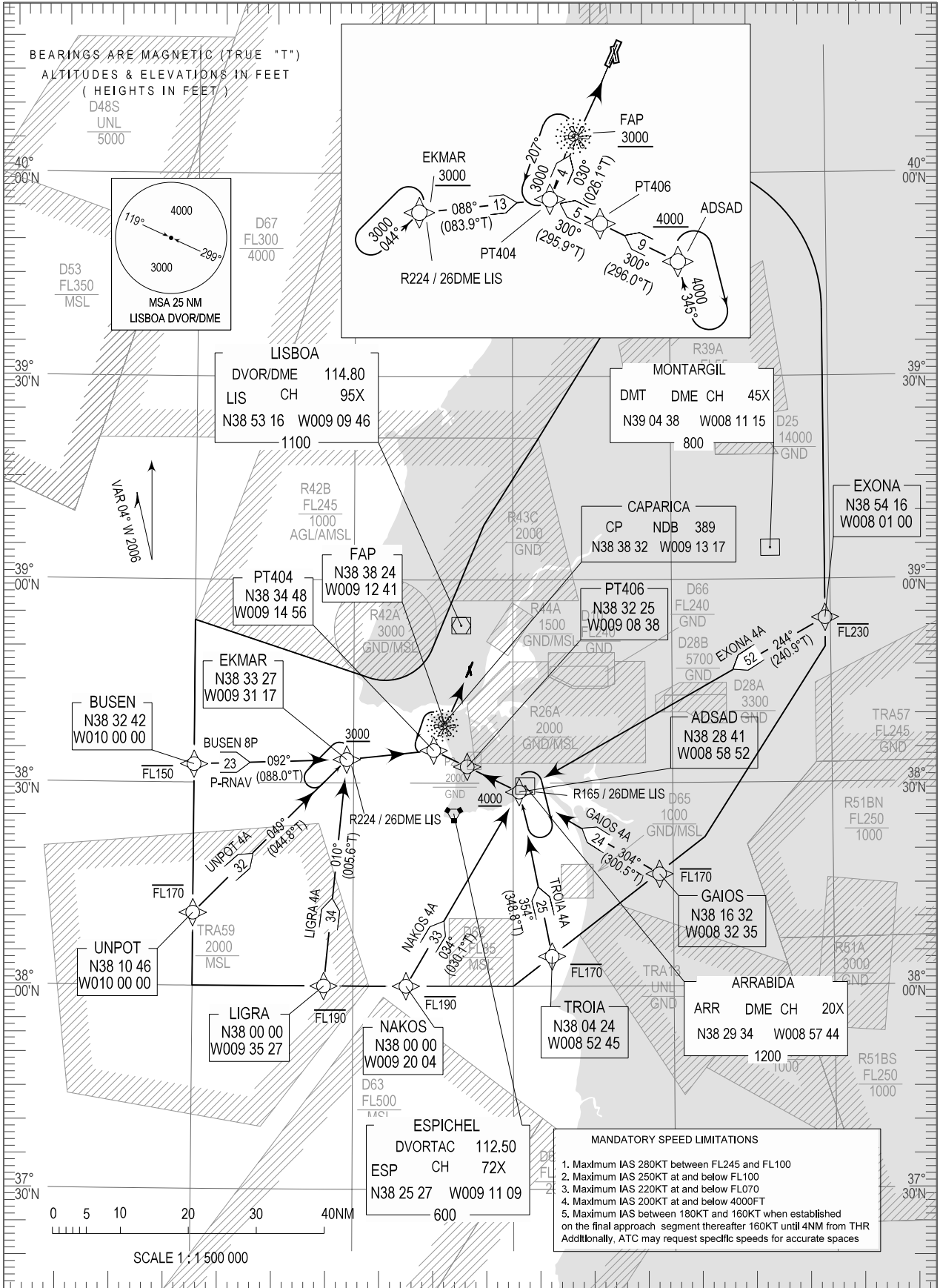


STANDARD ARRIVAL CHART -
INSTRUMENT (STAR) - ICAO

TRANSITION ALTITUDE
4000

TWR 118.100
APP 119.100
ACC 120.600

LISBOA (LPPT)
RNAV RWY 03/35
BUSEN 8P, EXONA 4A, GAIOS 4A, LIGRA 4A
NAKOS 4A, TROIA 4A, UNPOT 4A



New Area D-67 inserted. Danger area D-47 withdrawn

THIS PAGE INTENTIONALLY LEFT BLANK