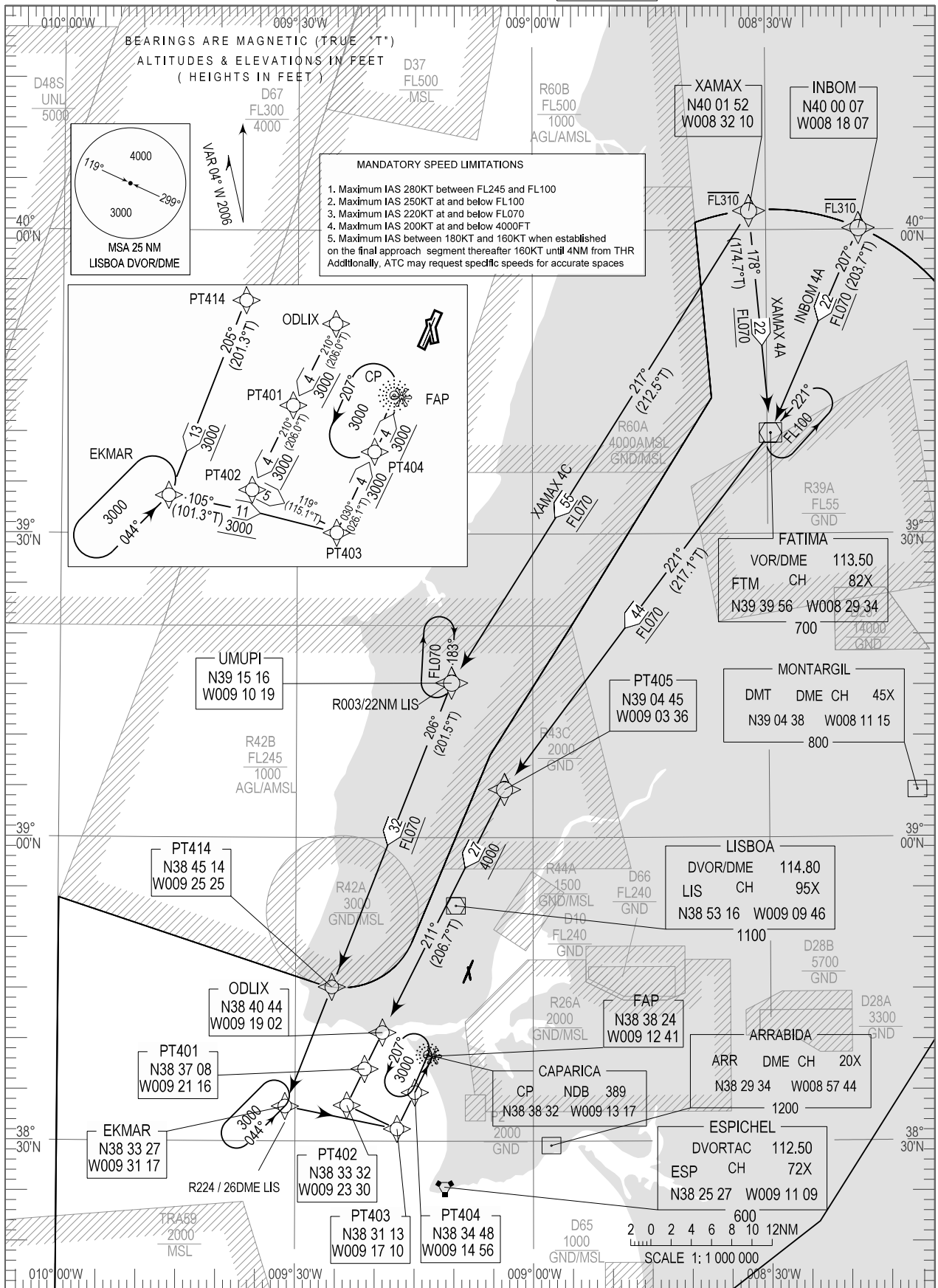


STANDARD ARRIVAL CHART -  
INSTRUMENT (STAR) - ICAO

TRANSITION ALTITUDE  
4000

TWR 118.100  
APP 119.100  
ACC 120.600

LISBOA (LPPT)  
RNAV RWY 03/35  
INBOM 4A, XAMAX 4A, XAMAX 4C



New Area D-67 Inserted. Danger area D-47 withdrawn

THIS PAGE INTENTIONALLY LEFT BLANK