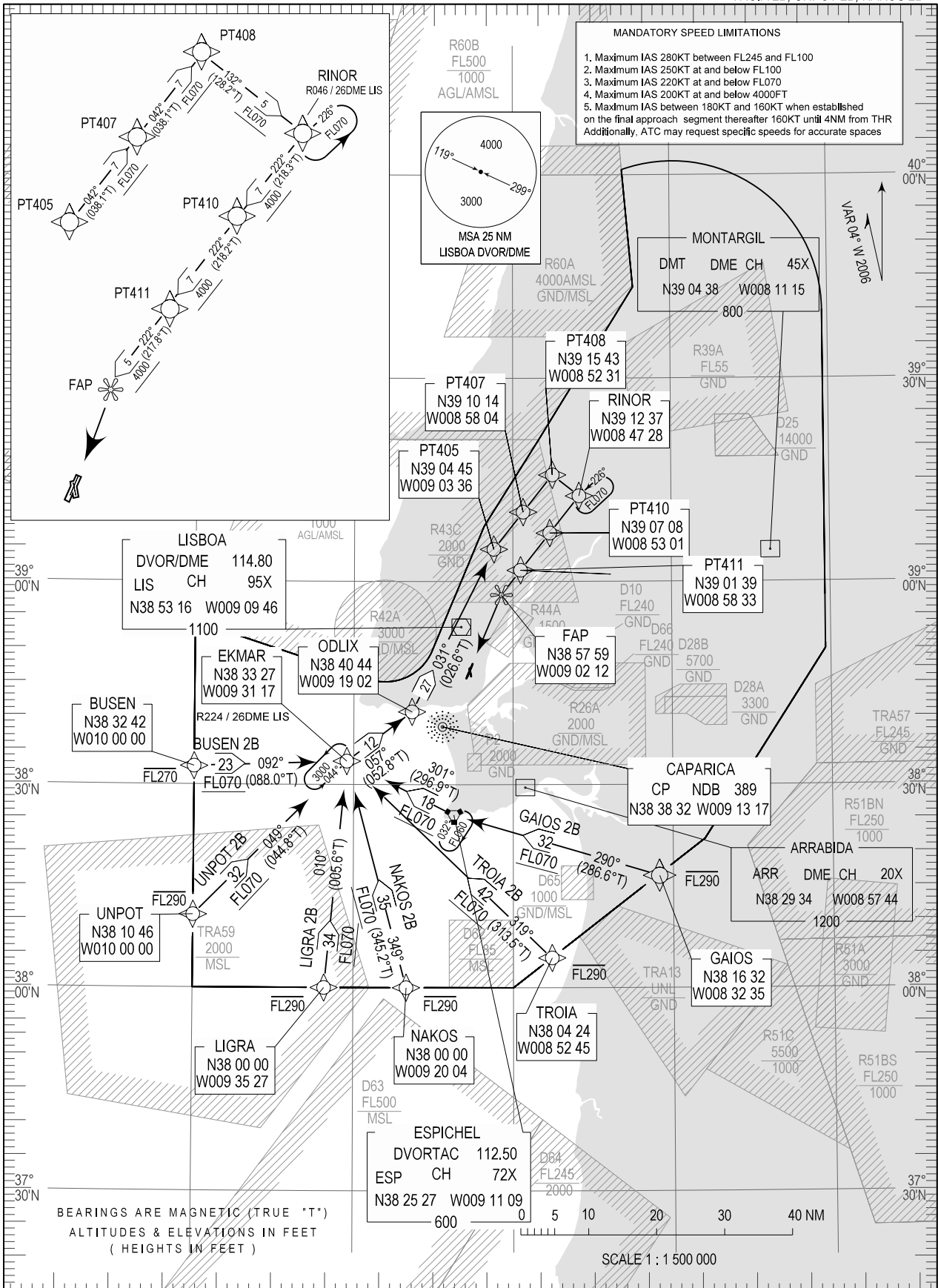


STANDARD ARRIVAL CHART -  
INSTRUMENT (STAR) - ICAO

TRANSITION ALTITUDE  
4000

TWR 118.100  
APP 119.100  
ACC 120.600

LISBOA (LPPT)  
RNAV RWY 21  
BUSEN 2B, LIGRA 2B, GAIOS 2B  
TROIA 2B, UNPOT 2B, NAKOS 2B



New Area D-66 inserted

THIS PAGE INTENTIONALLY LEFT BLANK