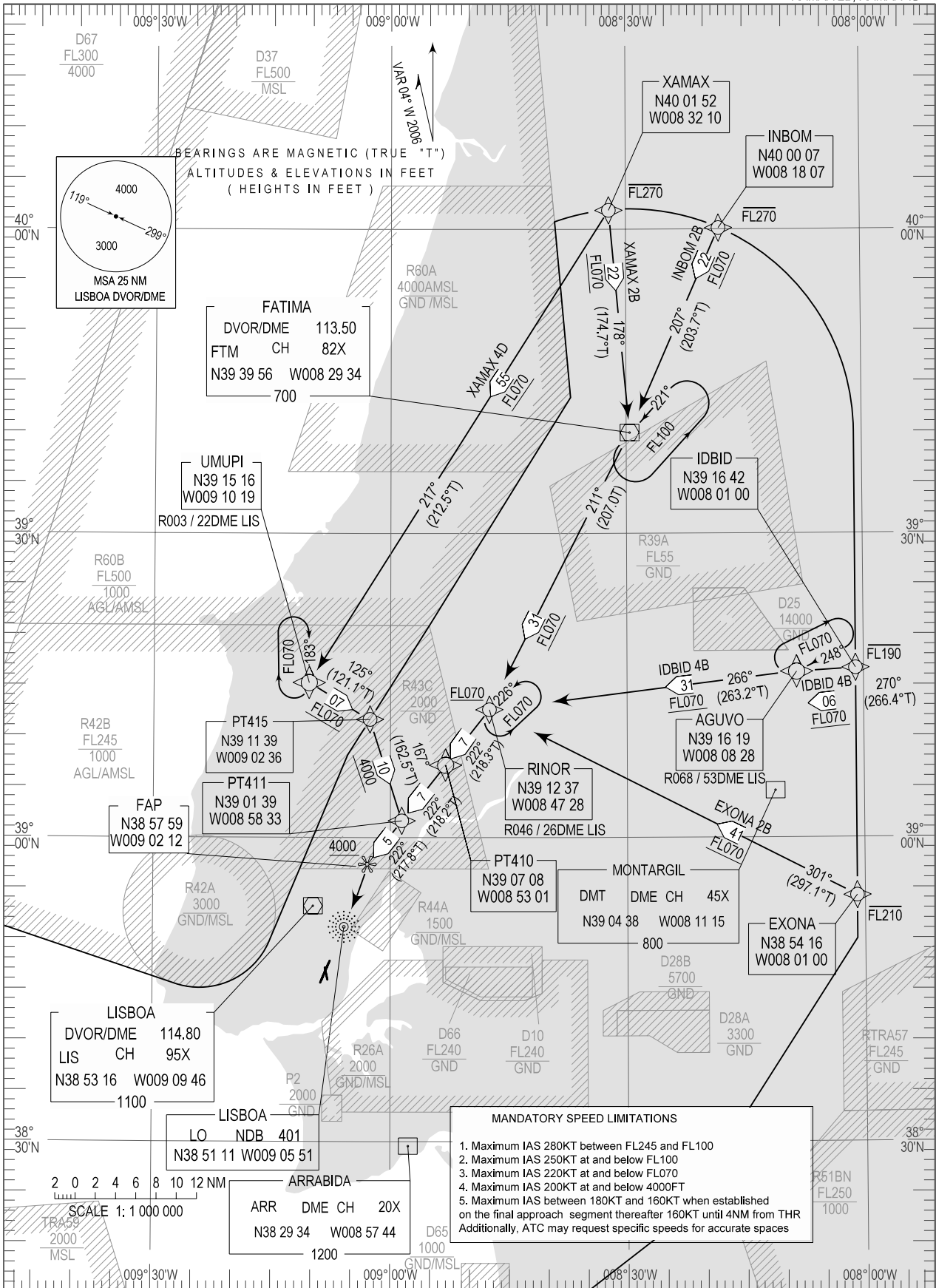


STANDARD ARRIVAL CHART - INSTRUMENT (STAR) - ICAO

TRANSITION ALTITUDE 4000

TWR 118.100
APP 119.100
ACC 120.600

LISBOA (LPPT)
RNAV RWY 21
EXONA 2B, IDBID 4B, INBOM 2B
XAMAX 2B, XAMAX 4D



New Area D-67inserted. Danger area D-47 withdrawn

THIS PAGE INTENTIONALLY LEFT BLANK