

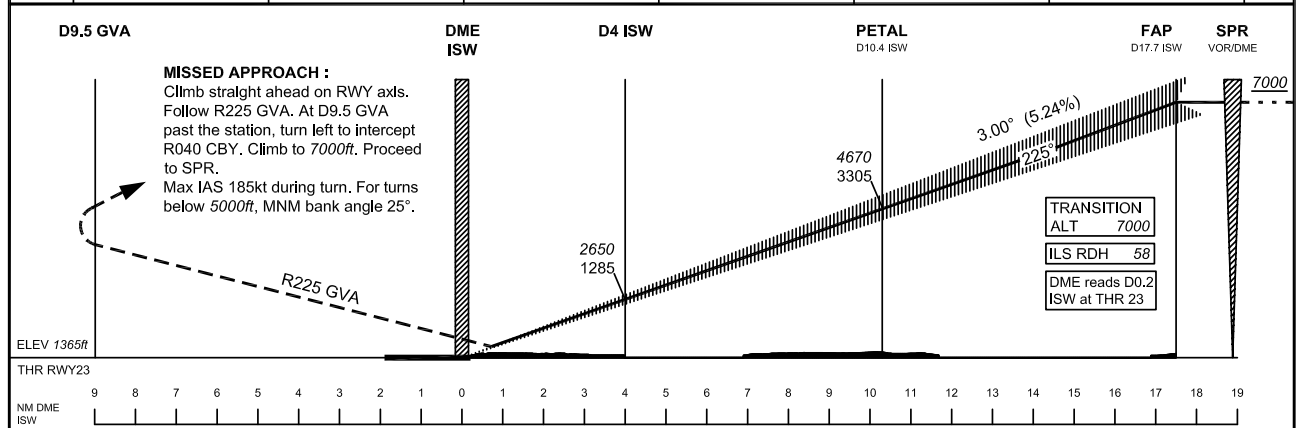
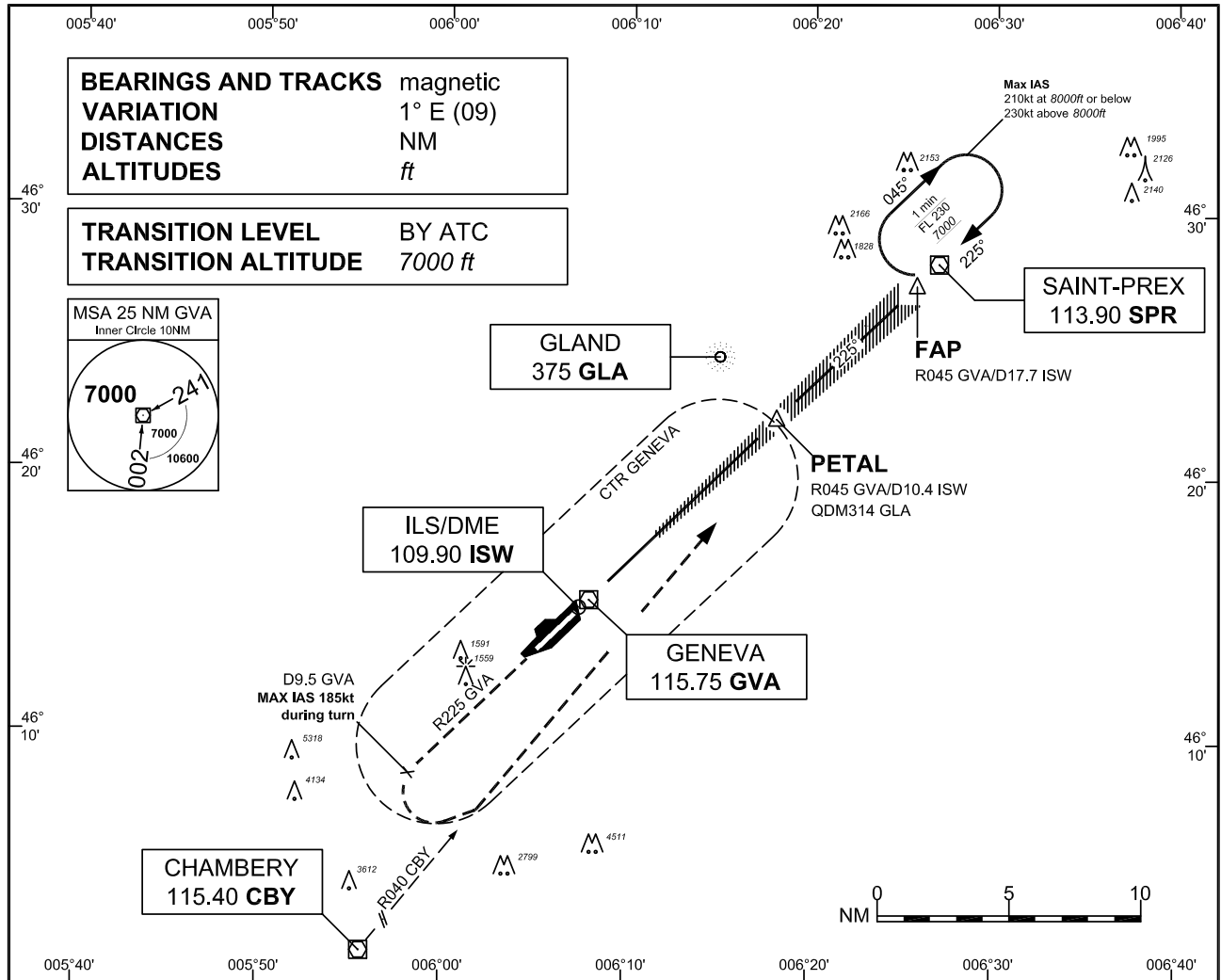
INSTRUMENT  
APPROACH  
CHART ICAO

ELEV 1411ft

ATIS	135.575	
APP	136.250	
FINAL	120.300	
TWR	118.700	

GENEVA

ILS RWY 23 CAT II & III



OBSTACLE CLEARANCE ALTITUDE/HEIGHT (OCA/H)		A	B	C	D
Straight-in approach	CAT I <sup>1)</sup> pressure altimeter	1516 / 151	1526 / 161	1536 / 171	1549 / 184
	CAT II <sup>1)</sup> radio altimeter	1464 / 99			
	radio altimeter and autopilot	1464 / 99			
Circling <sup>3)</sup>	RWY05	2100 / 689		2400 / 989	

DECISION ALTITUDE/HEIGHT (DA/H)		RVR	A	B	C	D
CAT I	pressure altimeter <sup>2)</sup>	550	1565 / 200			
CAT II	radio altimeter <sup>2)</sup> and autopilot	300 <sup>4)</sup>	1465 / 100			

DME ISW	2	4	6	8	10	12	14	16
ALT	2010	2650	3280	3920	4560	5190	5830	6470

Remarks :  
 1) above THR elevation 1365ft.  
 2) radio altimeter reading at CAT I DH 216ft, at CAT II DH 108ft, for lower operating minima (DH and RVR) PPR FOCA.  
 3) above aerodrome ELEV 1411ft, circling on assignment by ATC under special conditions and north of RWY only, speed and radius for category D as for category C aircraft.  
 4) MNM CATII for CAT D ACFT without autoland 350m.

COR : Missed approach text

THIS PAGE INTENTIONALLY LEFT BLANK