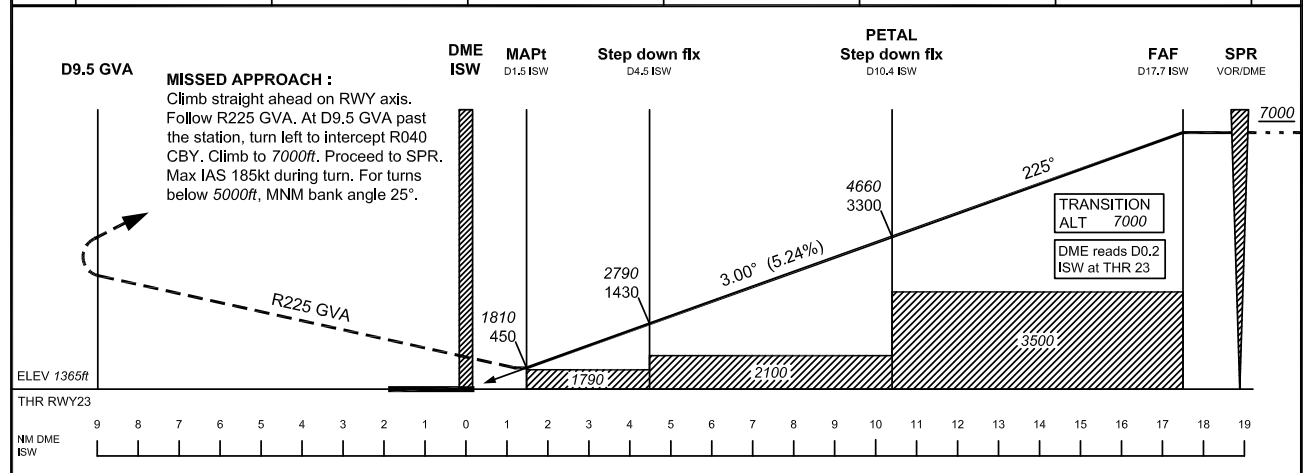
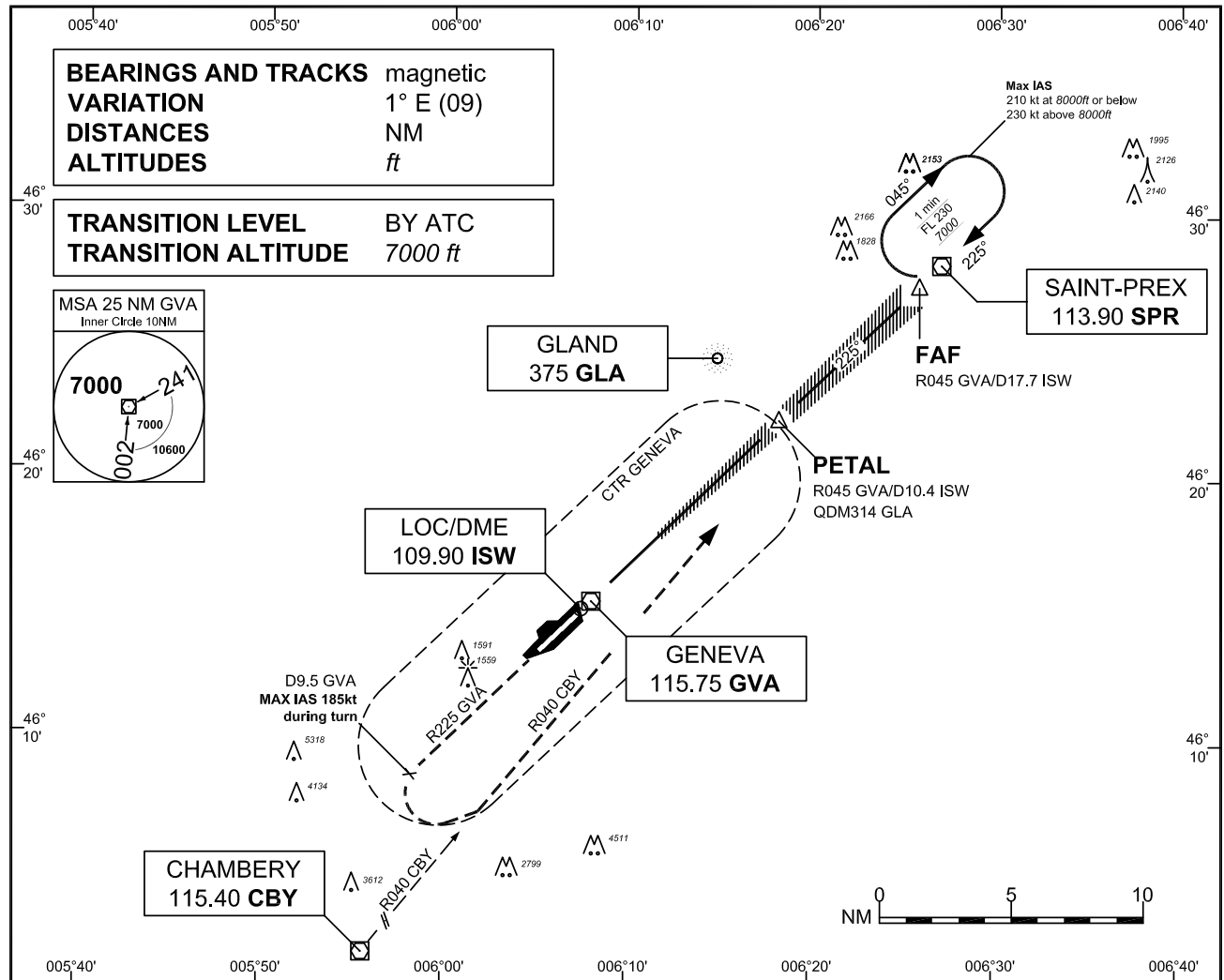


INSTRUMENT
APPROACH
CHART ICAO

ELEV 1411ft

ATIS	135.575	
APP	136.250	
FINAL	120.300	
TWR	118.700	

GENEVA
LOC RWY 23



OBSTACLE CLEARANCE ALTITUDE/HEIGHT (OCA/H)		A	B	C	D
Straight-in approach ¹⁾		1810 / 450			
Circling ²⁾	RWY05	2100 / 690		2400 / 990	
ROD	GS kt	90	110	130	150
	FT/MIN	478	584	690	796

ISW DME	RECOMMENDED CROSSING ALT/HGT
16	6470 / 5110
14	5830 / 4470
12	5190 / 3830
10	4560 / 3200
8	3920 / 2560
6	3280 / 1920
4	2650 / 1290
2	2010 / 650

Remarks :

- above THR elevation 1365ft, MAPt at 1.3 NM THR23 (1.5 NM DME ISW).
- above aerodrome ELEV 1411ft, circling on assignment by ATC under special conditions and north of RWY only, speed and radius for category D as for category C aircraft.

COR : Missed approach text

THIS PAGE INTENTIONALLY LEFT BLANK