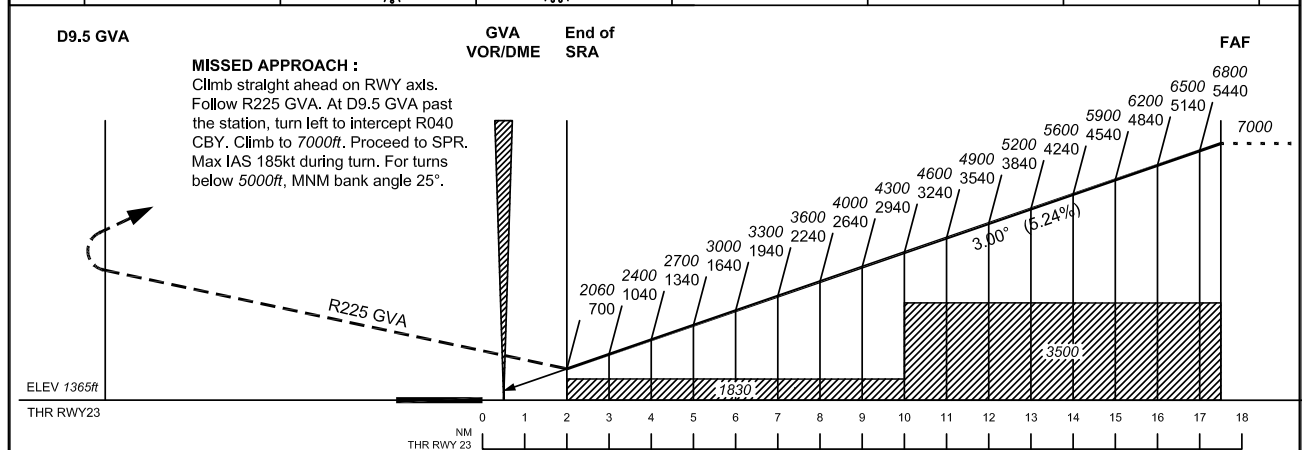
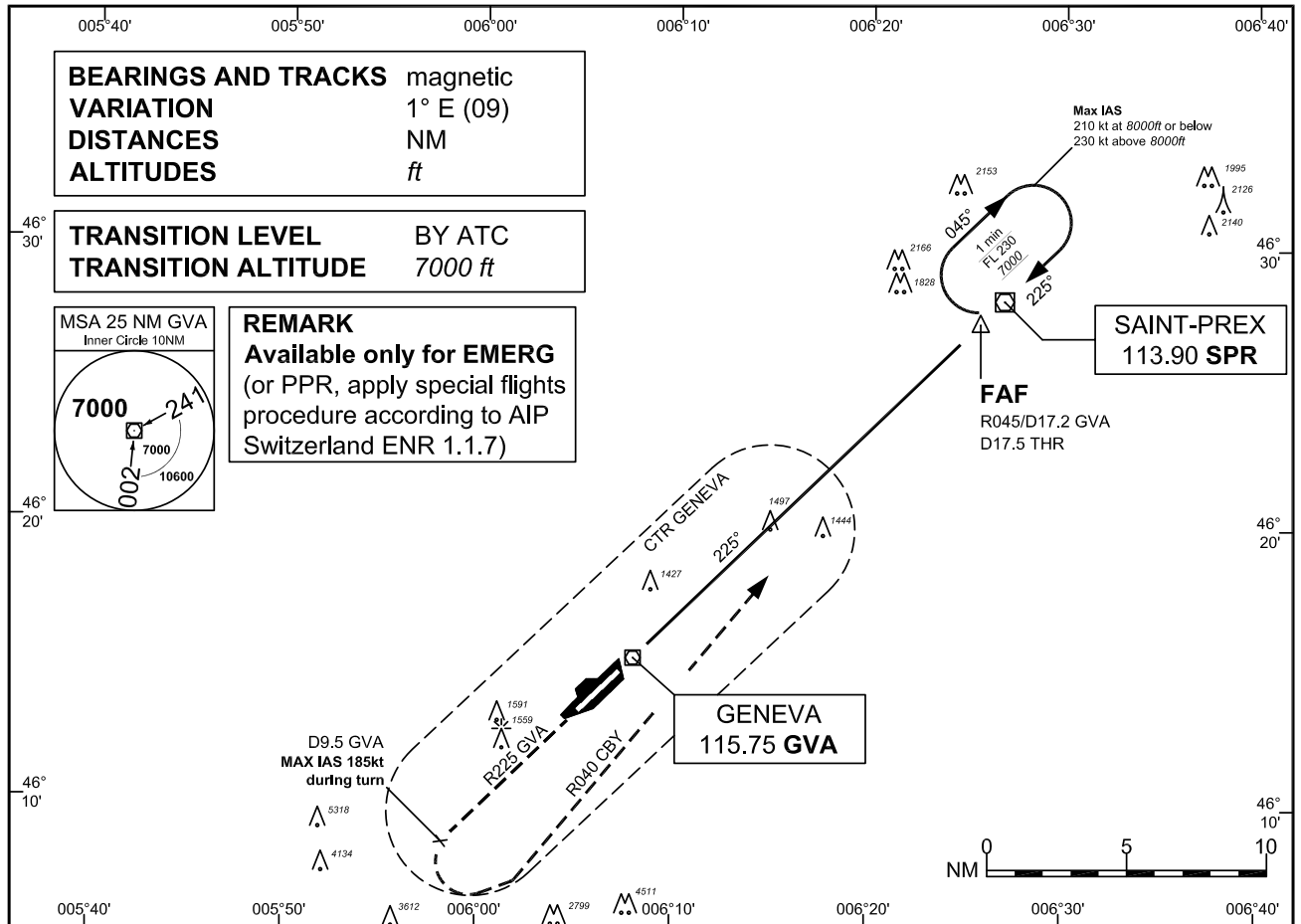


INSTRUMENT  
APPROACH  
CHART ICAO

ELEV 1411ft

ATIS	135.575	
APP	136.250	
FINAL	120.300	
TWR	118.700	

**GENEVA**  
SRA RWY 23



OBSTACLE CLEARANCE ALTITUDE/HEIGHT (OCA/H)		A	B	C	D
Surveillance Radar Approach		1830 / 470			
Clrcing <sup>1)</sup>	RWY05	2100 / 690		2400 / 990	
ROD	GS kt	90	110	130	150
	FT/MIN	478	584	690	796

**Remarks :**  
1) above aerodrome ELEV 1411ft, circling on assignment by ATC under special conditions and north of RWY only, speed and radius for category D as for category C aircraft.

Radar Fix	17	16	15	14	13	12	11	10	9	8	7	6	5	4	3	2
Altitude / Height	6800 / 5440	6500 / 5140	6200 / 4840	5900 / 4540	5600 / 4240	5200 / 3840	4900 / 3540	4600 / 3240	4300 / 2940	4000 / 2640	3600 / 2240	3300 / 1940	3000 / 1640	2700 / 1340	2400 / 1040	2060 / 700

COR : Missed Approach Text

THIS PAGE INTENTIONALLY LEFT BLANK