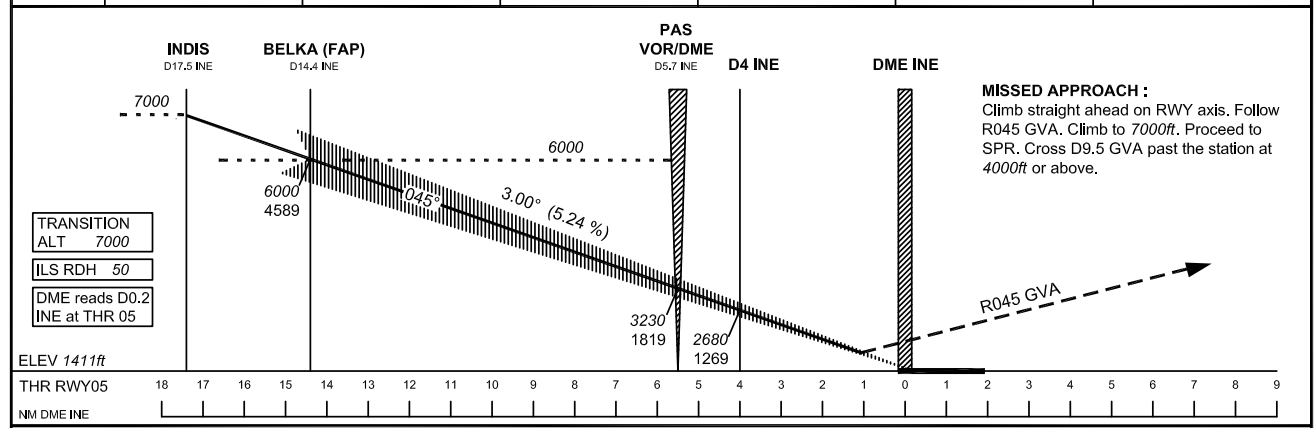
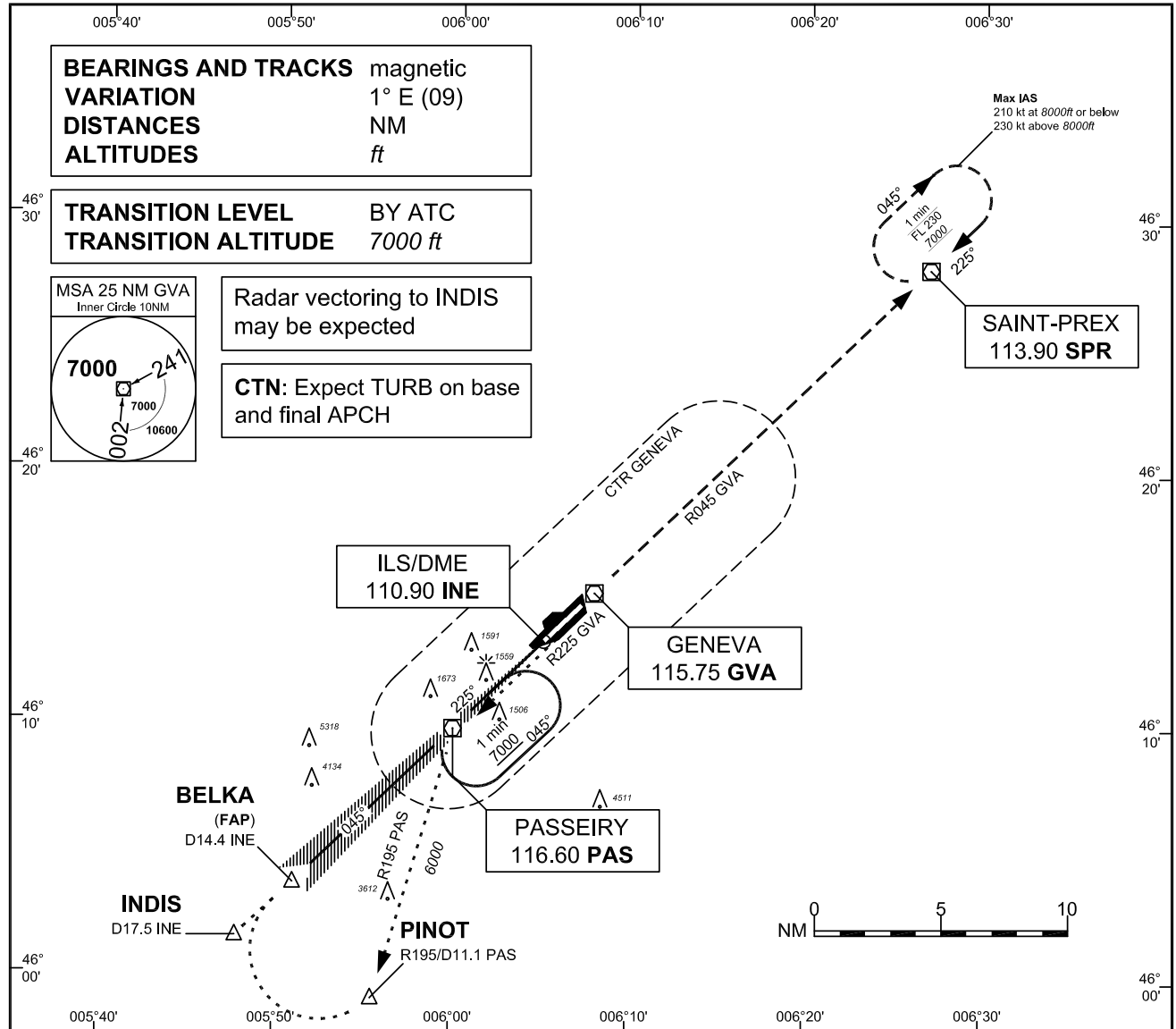


INSTRUMENT
APPROACH
CHART ICAO

ELEV 1411ft

ATIS	135.575
APP	136.250
FINAL	120.300
TWR	118.700

GENEVA
ILS RWY 05



INDIS D17.5 INE		BELKA (FAP) D14.4 INE		PAS VOR/DME D5.7 INE		D4 INE		DME INE						
7000		6000		3230		2680		R045 GVA						
6000		4589		1819		1269								
0.45°		3.00° (5.24%)												
TRANSITION ALT 7000														
ILS RDH 50														
DME reads D0.2 INE at THR 05														
ELEV 1411ft														
THR RWY05 18 17 16 15 14 13 12 11 10 9 8 7 6 5 4 3 2 1 0 1 2 3 4 5 6 7 8 9														
NM DME INE														
OBSTACLE CLEARANCE ALTITUDE/HEIGHT (OCA/H)		A	B	C	D	DECISION ALTITUDE/HEIGHT (DA/H)		RVR	A	B	C	D		
Straight-in approach		CAT I	pressure altimeter	1598 / 187	1608 / 197	1615 / 204	1624 / 213	CAT I	pressure altimeter	550	1611 / 200	1611 / 200	1615 / 204	1624 / 213
Circling ¹⁾		RWY23		2100 / 689		2400 / 989								
Remarks :														
1) Circling on assignment by ATC under special conditions and north of RWY only, speed and radius for category D as for category C aircraft.														
CTN: 0.3NM BFR THR05 visual segment surface (VSS) penetrated by trees up to 1474ft AMSL.														
DME INE		16	14	12	10	8	6	4	2					
ALT		6510	5870	5230	4590	3960	3320	2680	2050					
COR : Missed Approach text														

THIS PAGE INTENTIONALLY LEFT BLANK