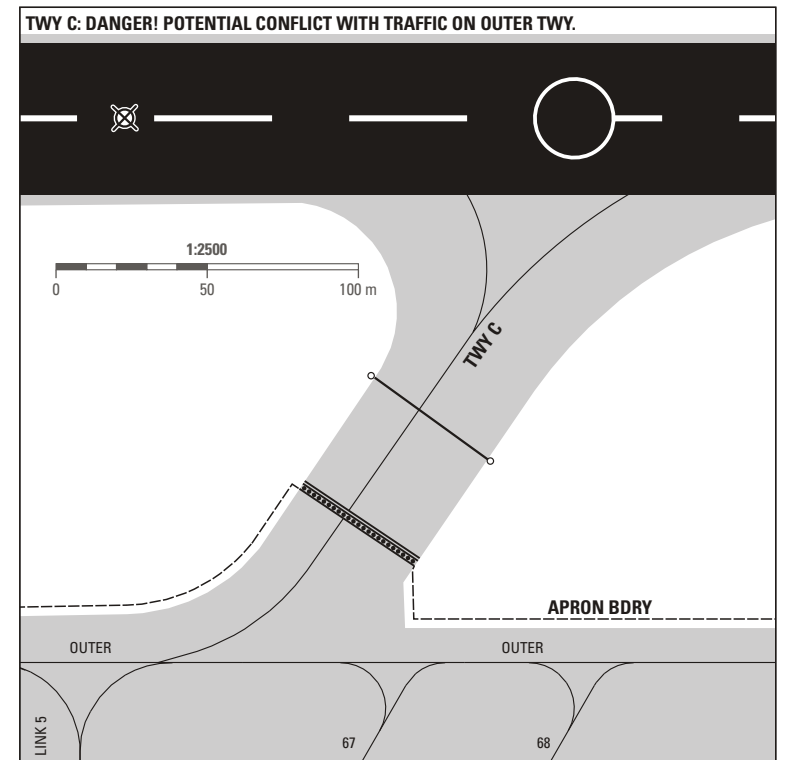
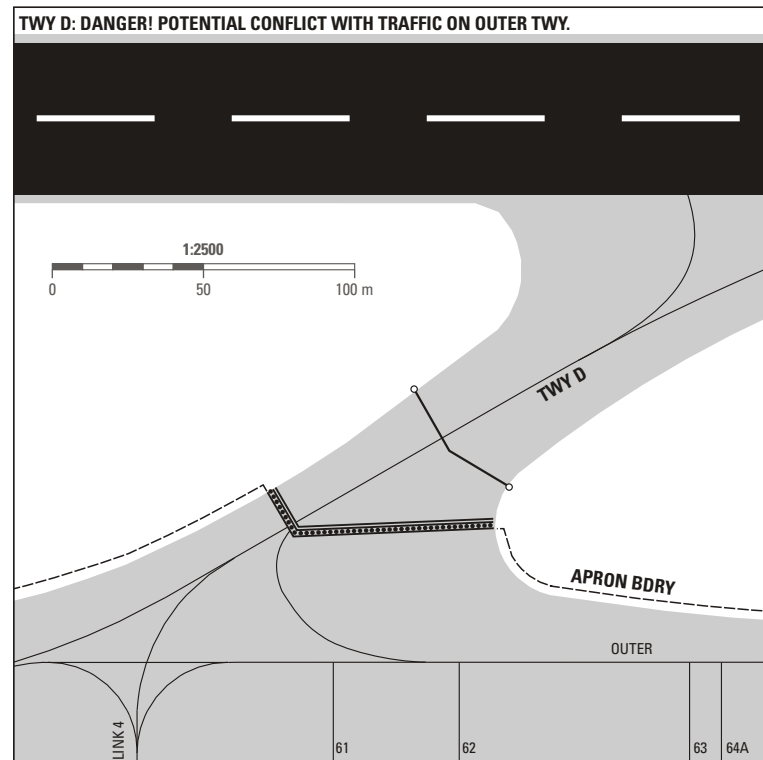
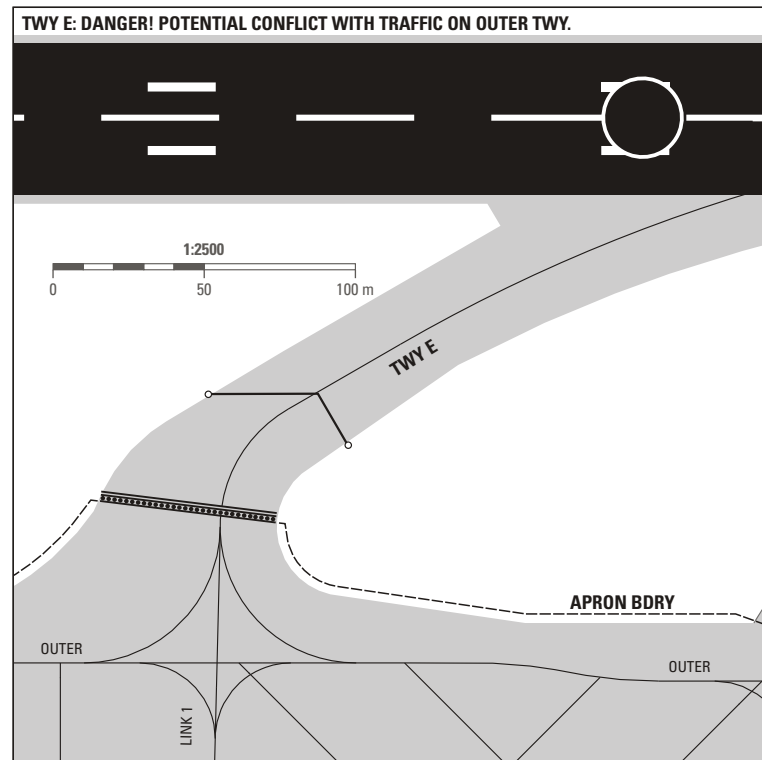


HOT SPOTS



TWY LGT	
EDGE	Apron Area, RWY-Exits, TWY Curves
CL	A, B, D, E, G, OUTER and holding bays A and G
RETIL	B, D and E
RGL	A*, B, C, D, E, F, G*, Y, Z *Across TWY

LEGEND / RMK

Arrivals:
PSN equipped with/without visual docking guidance system: LSGG AD 2.9
STOP line 1, 2 and 3 transmitted by GENEVA APRON

Departures:
Push back procedure: LSGG AD 2.20

ATIS	135.575
DEL	121.675
APRON SOUTH	121.85
TWR	118.7

TWY:
— Guideline for taxiing
— Holding position CAT I
— Stop bar LGT CAT II-III
— Stop bar LGT CAT II-III H24
○ RWY GUARD LGT

Taxiways:
On apron, wing tip clearance is provided only if ACFT main gear center remains over the guidelines.
When runway 23 is in use : Aircraft shall not use TWY CHARLIE unless otherwise instructed by TWR. If instructed to vacate via TWY CHARLIE, aircraft shall clear the runway and hold on TWY CHARLIE remaining Clear of OUTER TWY.
Taxiway F: Usable in CAT I conditions only. Available to ACFT of wake turbulence CAT MEDIUM, except B757.

COR: FREQ

THIS PAGE INTENTIONALLY LEFT BLANK