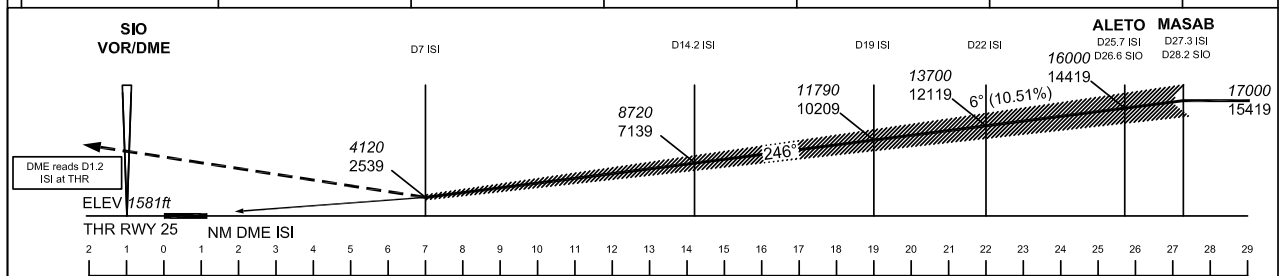
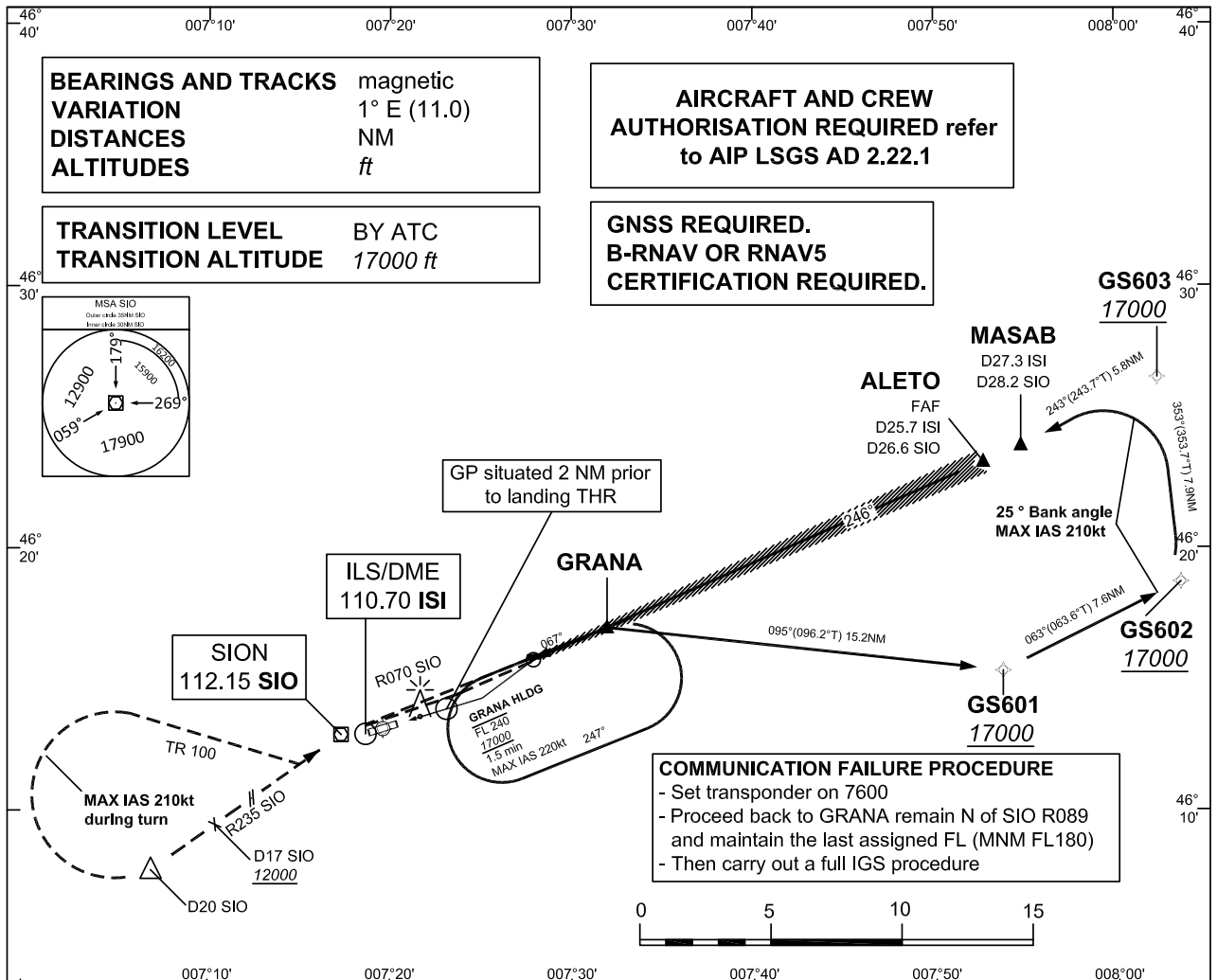


INSTRUMENT
APPROACH
CHART
ICAO

ELEV 1581ft

RADAR	Swiss MIL	130.625	
RADAR	Sion	126.825	122.350
TWR	Sion	118.275	
GND	Sion	121.700	

SION
IGS RWY 25 (CAT A/B/C)
(IGS instruction: see LSGS AD 2.22)
Glide path 6°, visual part 3.5°



MISSED APPROACH
Climb initially on LOC course 246°. At D7 ISI proceed on TR246. When passing D5.5 SIO intercept R070 SIO to SIO. Leave SIO on R235, at D20 SIO turn right (max IAS 210kt during turn), establish TR100 to intercept R235 SIO INBD SIO. Proceed via SIO to GRANA. Climb to 17000ft. Cross D17 SIO at 12000ft or above. GRANA at 17000ft.

DA / H	Missed APCH climb gradient	A	B	C	VIS
Straight - in approach	2.5%	6550 ft / 4970 ft ¹⁾			5 km
	3.0%	6110 ft / 4530 ft ¹⁾			5 km
	3.5%	5670 ft / 4090 ft ¹⁾			5 km
	4.0%	5230 ft / 3650 ft ¹⁾			5 km
	4.5%	4790 ft / 3210 ft ¹⁾			5 km
	5.0%	4350 ft / 2770 ft ¹⁾			5 km
	5.5%	4120 ft / 2540 ft ¹⁾			5 km
Circling north of AD only	^{1) 2)} A = 3700	B = 5400 (MAX IAS 125 kt)		C = Prohibited	
	VIS 5 km	VIS 5 km			

General notes : - APCH PROHIBITED IF GP U/S
- Table for temperature deviation from ISA, see LSGS AD 2.23.2
- Final approach offset 7° from RWY centreline
- If unable to comply with MNM HLDG speed, inform ATC

Remarks : - CTN : This Is not a standard approach angle
- CTN : Visual segment surface not free of obstacles (see visual chart)

Table notes : 1) Special training required
2) Night circling prohibited

DME ISI	27.3	25.7	25	24	23	22	21	20	19	18	17
Dist THR	26.1	24.5	23.8	22.8	21.8	20.8	19.8	18.8	17.8	16.8	15.8
ALT	16980	15960	15510	14870	14240	13700	12960	12320	11680	11040	10400
DME ISI	16	15	14	13	12	11	10	9	8	7	
Dist THR	14.8	13.8	12.8	11.8	10.8	9.8	8.8	7.8	6.8	5.8	
ALT	9770	9130	8490	7850	7210	6570	5930	5300	4660	4020	

COR : Chart title

THIS PAGE INTENTIONALLY LEFT BLANK