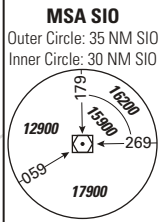


STANDARD INSTRUMENT DEPARTURE CHART
(SID) - ICAO

TRANSITION LEVEL by ATC
TRANSITION ALTITUDE 17000

SION LSGS
SID RMY 07/25



BEARINGS, TRACKS AND RADIALS ARE MAGNETIC
DISTANCES IN NM
ALTITUDES IN FT

VAR °E 2011

NOT TO SCALE

* PROCEDURE TEMPORARILY SUSPENDED

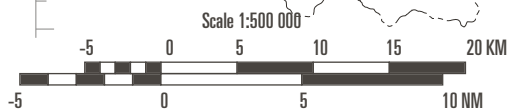
Contact SION GND 121.7
5 MIN prior to start-up

Aircraft and crew authorisation required
refer to AIP LSGS AD 2.22.1

B-RNAV OR RNAV5 CERTIFICATION
REQUIRED FOR SIDs ROCCA

Caution: MAX ALT applicable when MIL ON

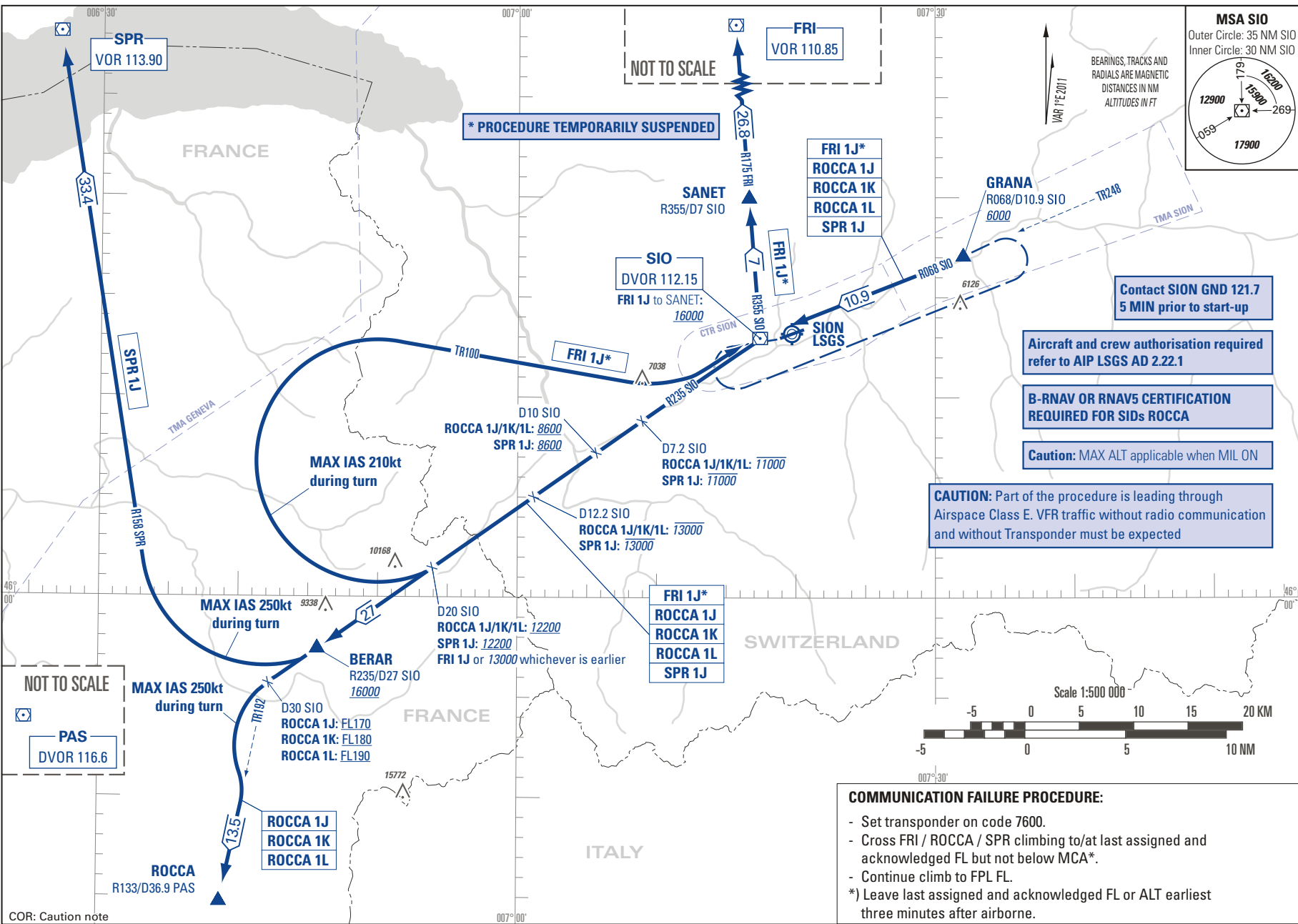
CAUTION: Part of the procedure is leading through
Airspace Class E. VFR traffic without radio communication
and without Transponder must be expected



COMMUNICATION FAILURE PROCEDURE:

- Set transponder on code 7600.
- Cross FRI / ROCCA / SPR climbing to/at last assigned and acknowledged FL but not below MCA*.
- Continue climb to FPL FL.

*) Leave last assigned and acknowledged FL or ALT earliest three minutes after airborne.



THIS PAGE INTENTIONALLY LEFT BLANK