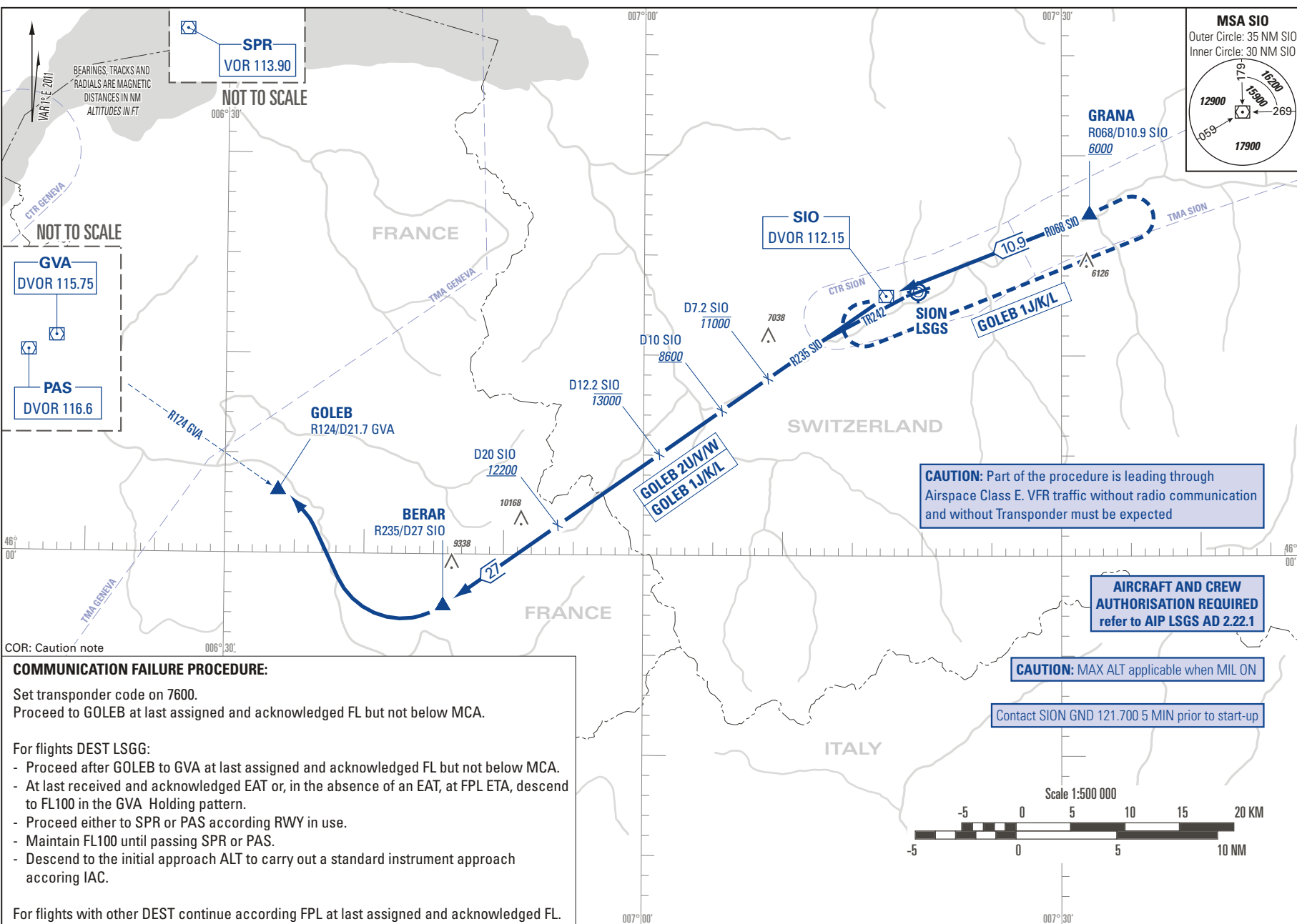
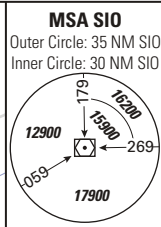


STANDARD INSTRUMENT DEPARTURE CHART  
(SID) - ICAO

TRANSITION LEVEL by ATC  
TRANSITION ALTITUDE 13000

SION LSGS  
SID RWY 07/25 ONLY FOR DEST  
WITHIN TMA LSGG OR LFLB



THIS PAGE INTENTIONALLY LEFT BLANK