

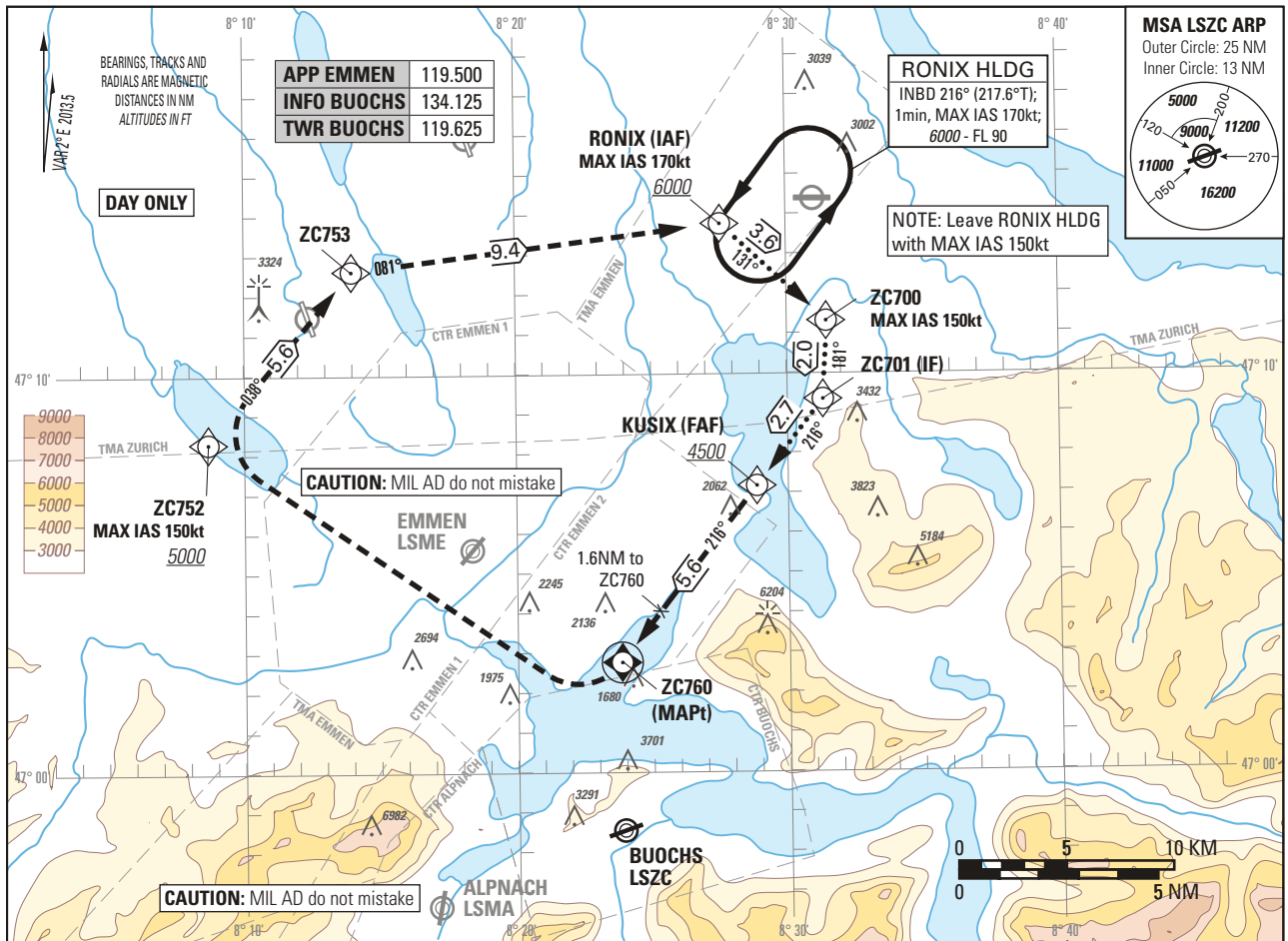
Instrument Approach Chart
(IAC) - ICAO

ELEV 1475ft

TRANSITION LEVEL by ATC
TRANSITION ALTITUDE 7000

BUOCHS LSZC
RNAV (GNSS) A
ACFT CAT A/B

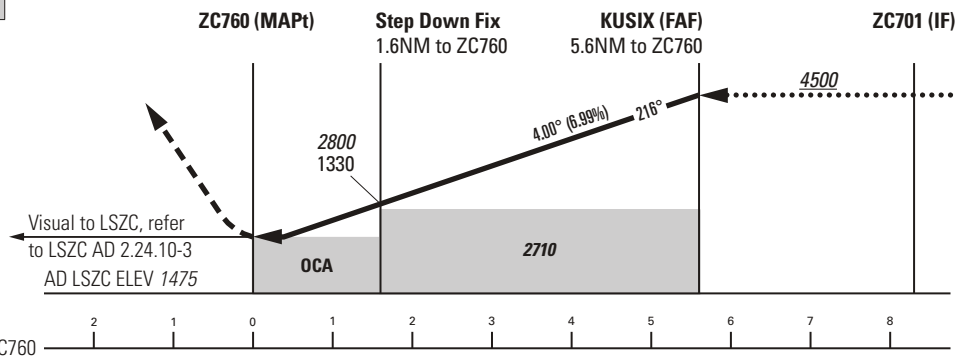
PROCEDURE LIMITED TO PILOTS OPERATING FOR PILATUS AIRCRAFT LTD



MISSED APPROACH

Climb to 6000.

Climb straight ahead. At ZC760 (MAPt) turn right (MAX IAS 150kt until ZC752). Proceed via ZC752 and ZC753 to RONIX and hold. Cross ZC752 at 5000 or above.



Missed APCH climb gradient	A	B
	OCA(H) ¹⁾ LNAV	
2.5%	2340 (870)	
5% to 3000	2280 (810)	
	MDA(H) ¹⁾	
	3500 (2030) ²⁾	
2.5%	2340 (870) ³⁾	
5% to 3000	2280 (810) ³⁾	

CAUTION
This is not a standard APCH angle.

REMARK
- VIS APCH following ZC760 according LSZC AD 2.24.10-3.

NOTE
¹⁾ OCH/MDH above AD ELEV.
²⁾ CTR EMMEN 2 not active.
³⁾ CTR EMMEN 2 active.

Dist to ZC760	1	2	3	4	5
	ALT	2550	2970	3400	3820
ROD	GS kt	90	110	130	
	FT/MIN	637	779	921	

COR: distance ZC753-RONIX

THIS PAGE INTENTIONALLY LEFT BLANK