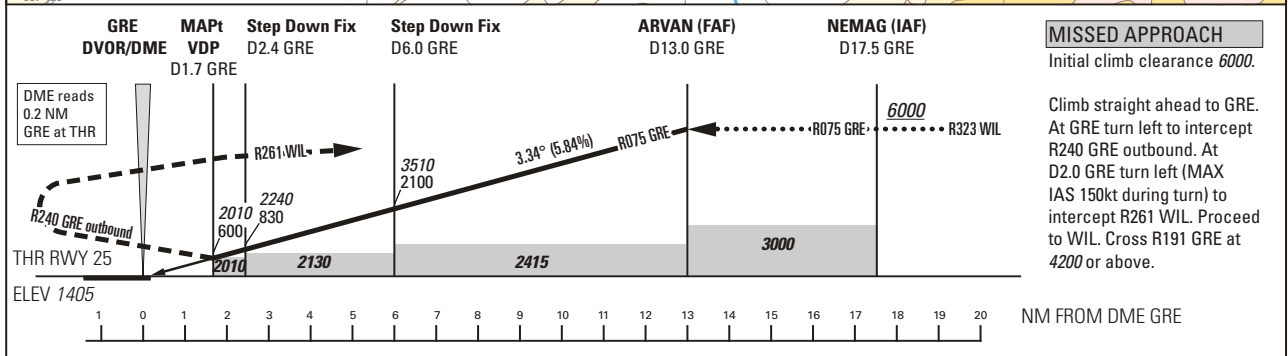
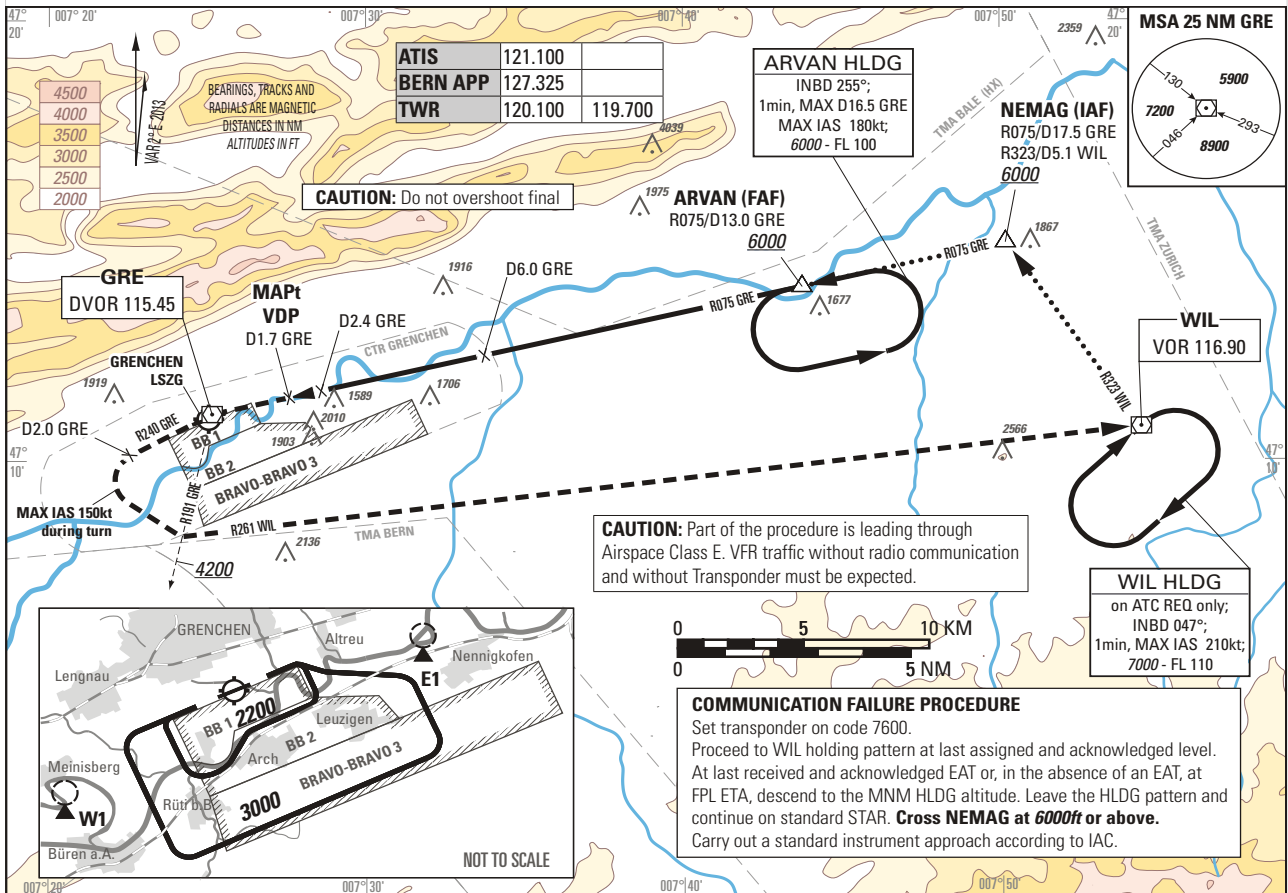


Instrument Approach Chart
(IAC) - ICAO

ELEV 1411ft

TRANSITION LEVEL by ATC
TRANSITION ALTITUDE 6000

GRENCHEN LSZG
VOR RWY 25
ACFT CAT A / B



ROD	GS kt	90	110	130	150
	FT/MIN	533	651	769	888

Missed APCH climb gradient requirement	STRAIGHT-IN APPROACH ¹⁾		
	OCA(H)		Remark
	A	B	
2.5%	2010 ²⁾ (600)		see note ²⁾

CIRCLING ³⁾	A	B	Remark
	OCA	2270	
VIS	1900 m	2800 m	

NOTE

¹⁾ Noise abatement:
- do not turn onto final before reaching 1.2 NM GRE.

²⁾ BRAVO-BRAVO (BB) sectors: CAUTION: MDA 4190ft when BB3 active.

³⁾ Circling:
- avoid overflying villages
- whenever possible, circling ALT 3000ft on outer downwind.

⁴⁾ No circlings north of RWY 07/25

COR: BINGI replaced by NEMAG, BB Sectors and VFR REP Point, Caution note

THIS PAGE INTENTIONALLY LEFT BLANK