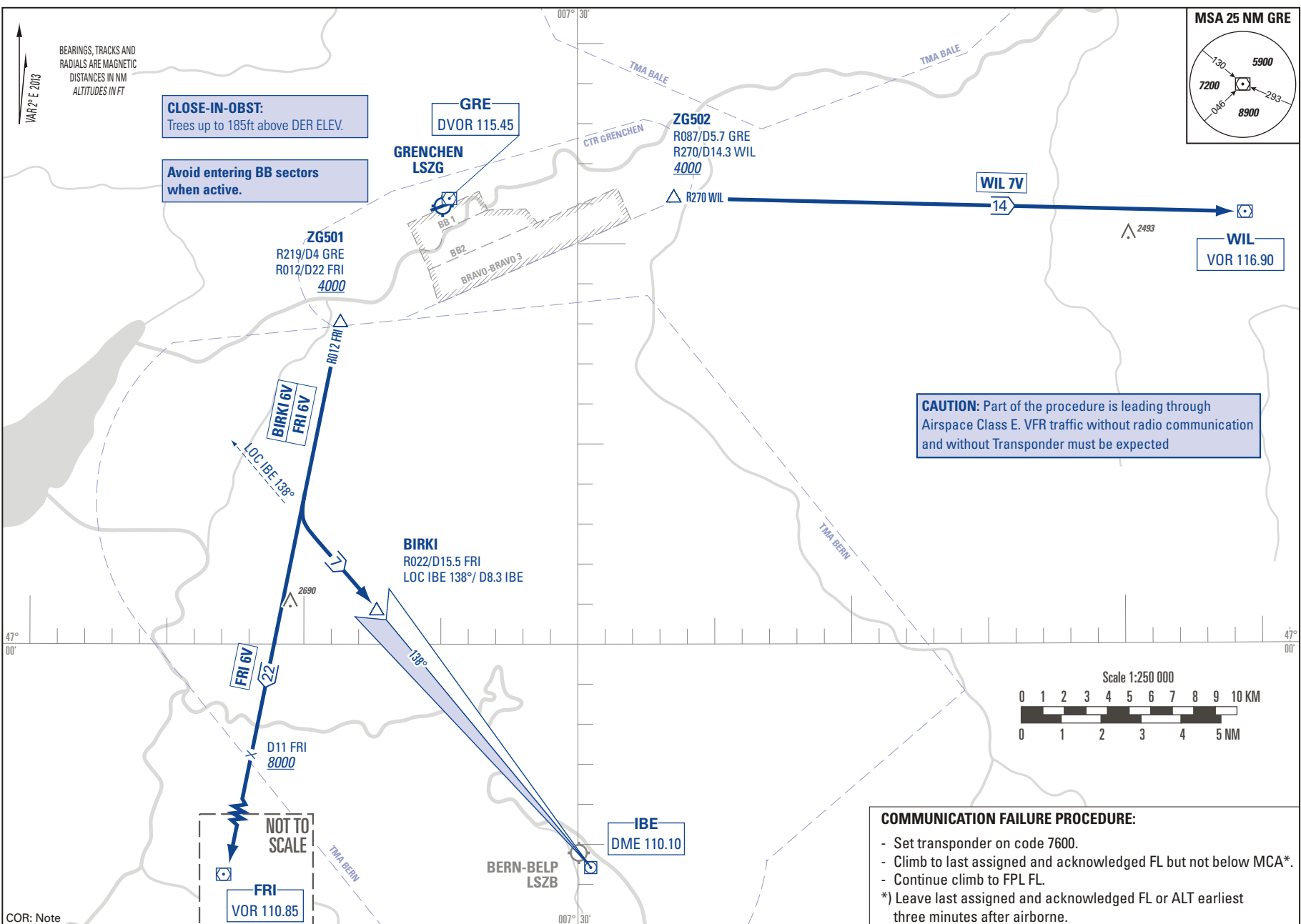
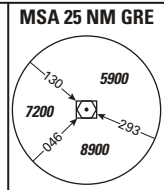


STANDARD INSTRUMENT DEPARTURE CHART
(SID) - ICAO

TRANSITION LEVEL by ATC
TRANSITION ALTITUDE 6000

GRENCHEN LSZG
VISUAL SID RWY 07/25 - NON RNAV



BEARINGS, TRACKS AND RADIALS ARE MAGNETIC
DISTANCES IN NM
ALTITUDES IN FT

VAR 2° E 2013

CLOSE-IN-OBST:
Trees up to 185ft above DER ELEV.

Avoid entering BB sectors
when active.

CAUTION: Part of the procedure is leading through
Airspace Class E. VFR traffic without radio communication
and without Transponder must be expected

COMMUNICATION FAILURE PROCEDURE:

- Set transponder on code 7600.
- Climb to last assigned and acknowledged FL but not below MCA*.
- Continue climb to FPL FL.

*) Leave last assigned and acknowledged FL or ALT earliest three minutes after airborne.

COR: Note

THIS PAGE INTENTIONALLY LEFT BLANK